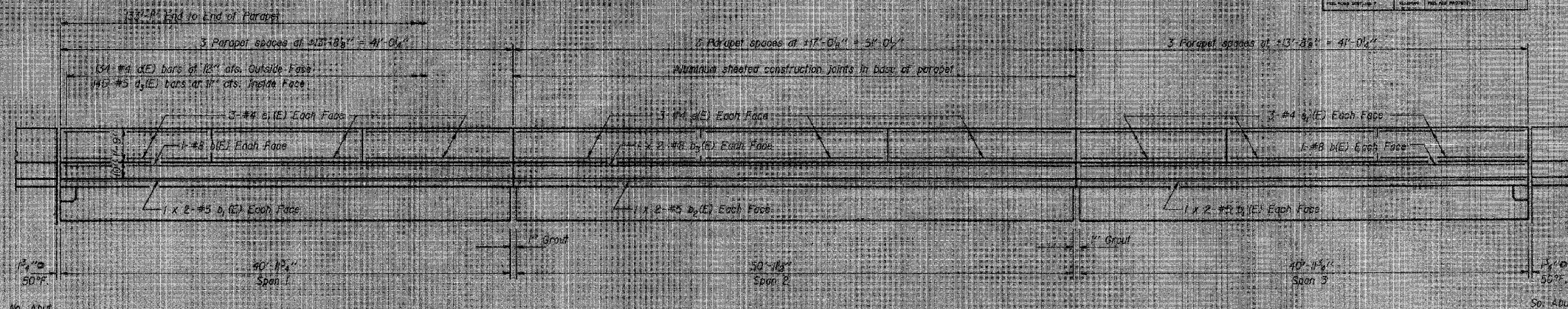
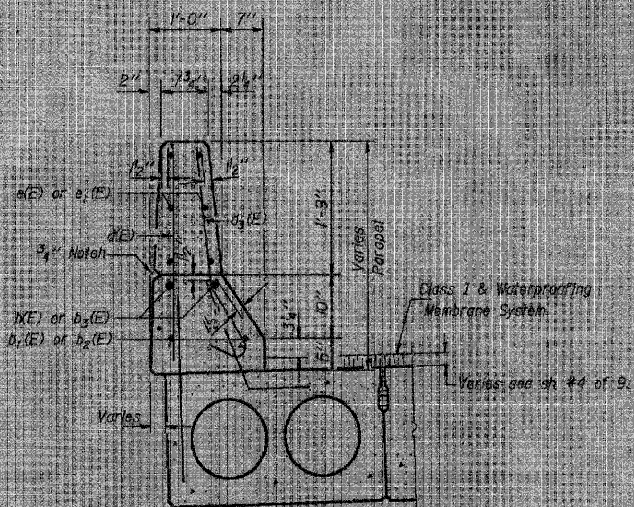


STATE OF ILLINOIS
DEPARTMENT OF TRANSPORTATION

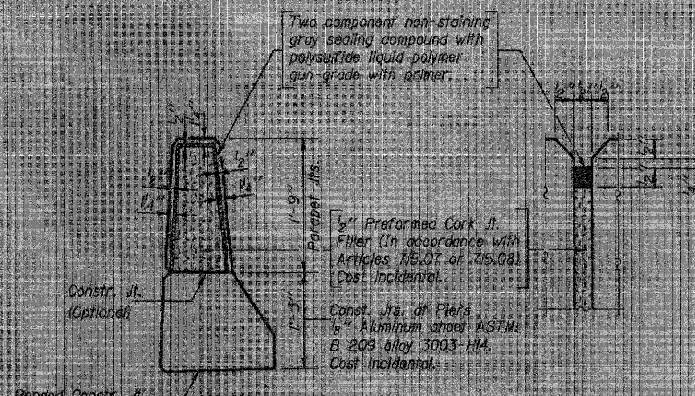
DATE	REVISION	BY	NO.	SHEET NO.
				9
SHEETS				



INSIDE ELEVATION OF PARAPET



SECTION THRU PARAPET



PARAPET JOINT DETAILS

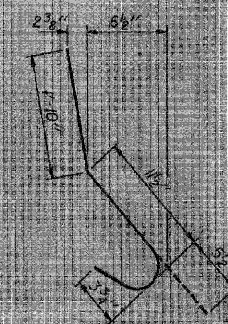
MIN. BAR LAPS

#5 Bar = 1'-8"
#8 Bar = 3'-5"

PARAPET
BILL OF MATERIAL

Bar	No.	Size	Length	Shape
d ₁ (E)	4	#8	40'-8"	—
d ₁ (L)	16	#8	21'-2"	—
d ₁ (L)	8	#8	26'-2"	—
d ₂ (L)	8	#8	27'-1"	—
d ₃ (E)	268	#4	2'-9"	—
d ₃ (E)	290	#6	3'-3"	—
d ₄ (E)	36	#4	16'-9"	—
d ₄ (L)	72	#4	13'-5"	—
Reinforcement Bars (Epoxy Coated)		Lbs.	4540	
Class X Concrete		Cu. Yds.	31.3	

Reinforcement bars designated (E) shall be epoxy coated.



BAR d₃(E)

PARAPET DETAILS

F.A. ROUTE 68 (ILL. 23) OVER
SHORT POINT CREEK
F.A. RT. 68 SEC. 102 B-1
LIVINGSTON COUNTY
STATION 625+82

DESIGNED: [Signature]
CHECKED: [Signature]
DATE: 08/05/10

APPROVED: [Signature]
DATE: 08/05/10