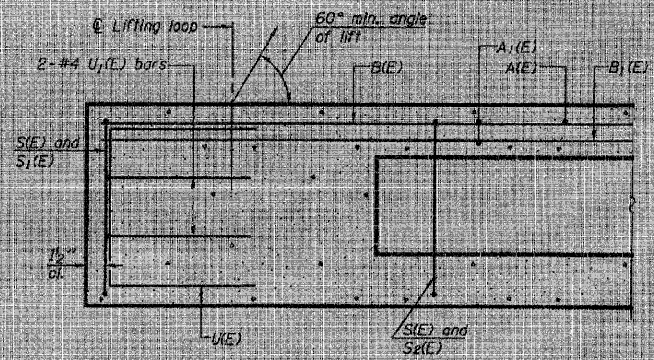
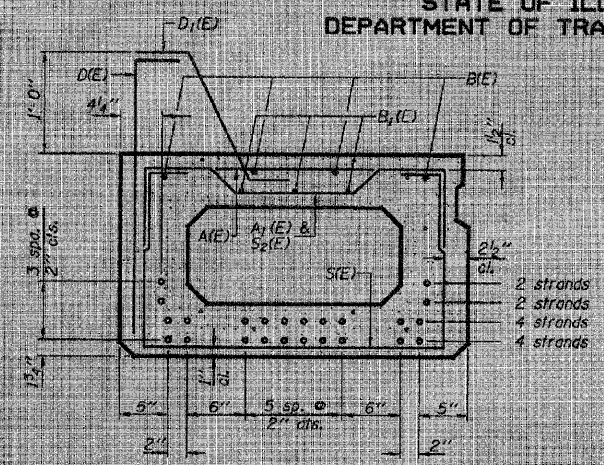


STATE OF ILLINOIS
DEPARTMENT OF TRANSPORTATION

PROJECT NO.	SECTION	COUNTY	SHEETS	SHEET NO.
FA 68	BR-1	LIVINGSTON	15	12
SHEET NO. 12 OF 6 SHEETS				
Contract Number: 66810				



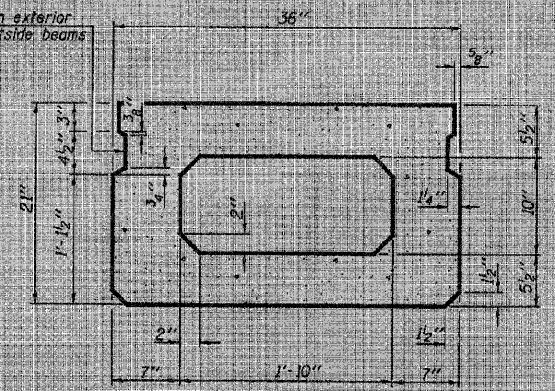
SECTION C-C



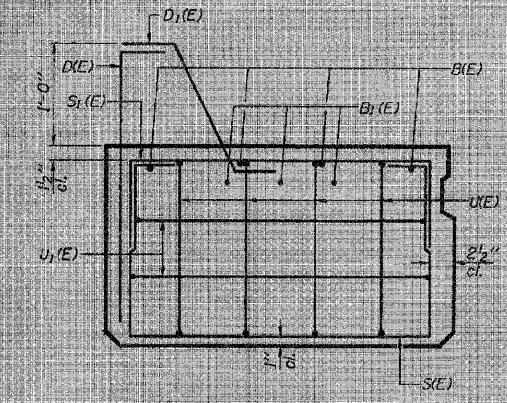
SECTION A-A
(Showing reinforcement and permissible strand locations.)

Note: Place the number of strands specified in each row symmetrically about the centerline of beam in the permissible strand locations shown.

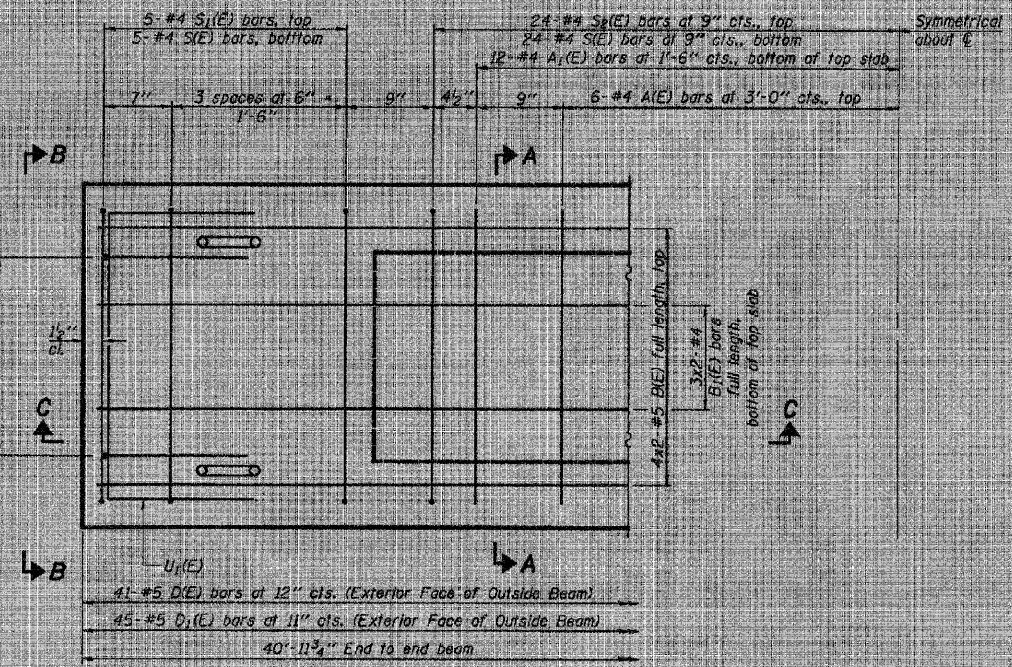
Limit key on exterior face of outside beams



SECTION A-A
(Showing dimensions)

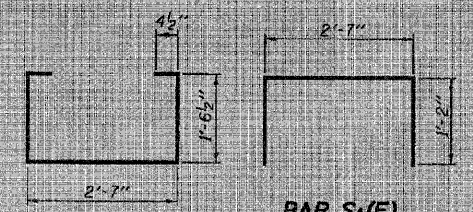


VIEW B-B



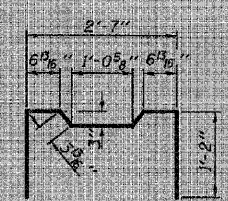
PLAN VIEW

Note: Spacing of S1(E) and S2(E) bars may be adjusted up to 4" in the immediate area of the transverse tie diaphragms to miss the block outs for the transverse ties.



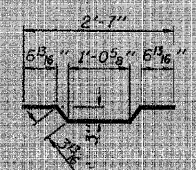
BAR S1(E)

BAR S2(E)

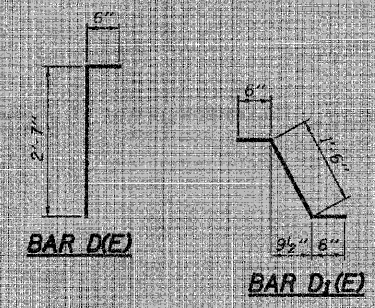


BAR U1(E)

BAR D1(E)



BAR A1(E)



BAR D1(E)

BAR D2(E)

BAR LIST
ONE 36" BEAM ONLY
(For Information Only)

Bar No.	Size	Length	Shape
A1(E)	#4	2'-7"	U
A2(E)	#4	2'-11"	U
B1(E)	#5	2'-6"	U
B2(E)	#4	2'-3"	U
D1(E)	#5	3'-1"	U
D2(E)	#5	2'-6"	U
S1(E)	#4	6'-5"	U
S2(E)	#4	4'-11"	U
U1(E)	#4	5'-2"	U
U2(E)	#4	4'-0"	U
U3(E)	#4	5'-0"	U

Bars indicated thus 4 x 2-#5 etc. indicates 4 line of bars with 2 lengths per line.
Note: See sheet 4 of 6 for additional details and Bill of Material.

BEAM DETAILS
FA 68 OVER SHORT POINT CREEK
LIVINGSTON COUNTY
SN 053-0161

DESIGNED	AJB
CHECKED	VHV
DRAWN	Steffen
CHECKED	AJB VHV

MAY 2, 2008
EXAMINED
PASSED
Professional Engineer
Professional Engineer

c:\projects\kms\0530161.dgn 5/2/2008 9:43:41 AM

FILE NAME = W:\2299-03 - IL Route 23 Roadway\0530161.dgn	USER NAME = IDOTCAD	DESIGNED - SPF	REVISED -	STATE OF ILLINOIS DEPARTMENT OF TRANSPORTATION	EXISTING BRIDGE PLANS FOR INFORMATION ONLY			F.A. RTE. 68	SECTION (102) BR-1	COUNTY LIVINGSTON	TOTAL SHEETS 58	SHEET NO. 48
PLOT SCALE = 0.2100 ' / in.	DRAWN - AJP	CHECKED - JMS	REVISED -		SCALE: NONE	SHEET NO. 11 OF 15 SHEETS	STA.	TO STA.	CONTRACT NO. 66822			
PLOT DATE = 8/2/2010	CHECKED - AJB VHV	DATE - 08/05/10	REVISED -		ILLINOIS FED. AID PROJECT							