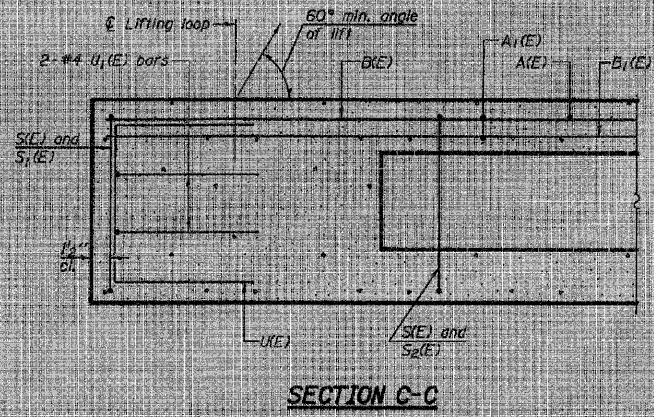
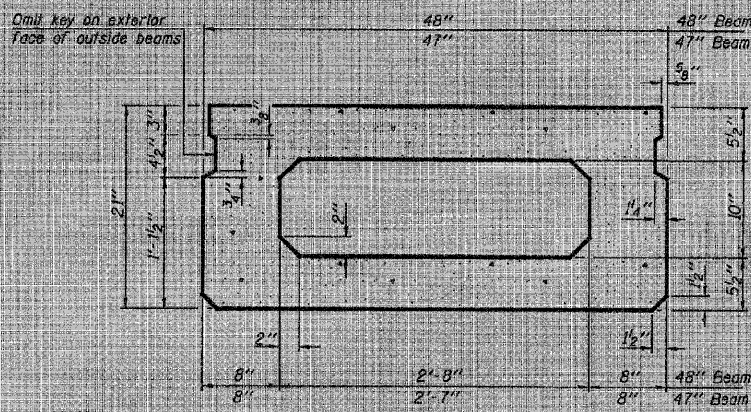


STATE OF ILLINOIS  
DEPARTMENT OF TRANSPORTATION

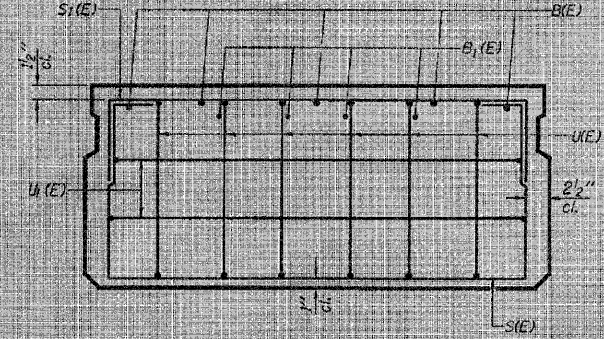
PROJECT NO.	FA 68	COUNTY	LIVINGSTON	SHEETS	16	NO.	13	SHEET NO.	3
FED. ROAD DIST. NO.		STATE	ILLINOIS	TOTAL SHEETS	6	SHEETS			
Contract Number: 66810									



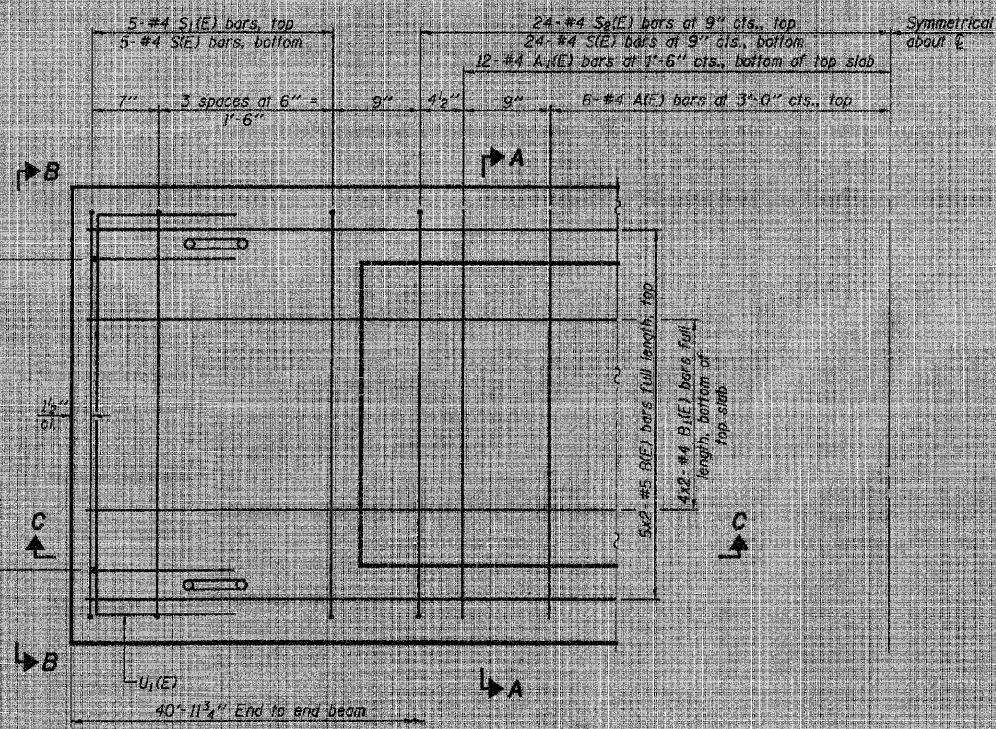
SECTION C-C



SECTION A-A  
(Showing dimensions)



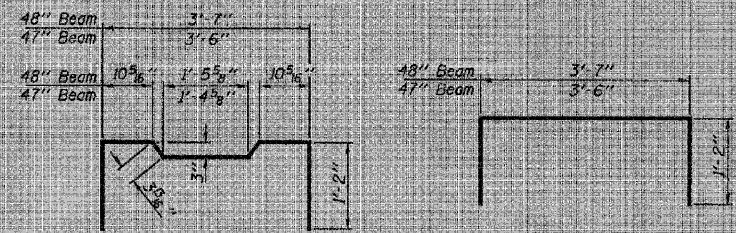
VIEW B-B



PLAN VIEW

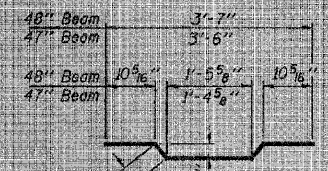
Notes: Spacing of S1(E) and S2(E) bars may be adjusted up to 9" in the immediate area of the transverse tie diaphragms to miss the block outs for the transverse ties.

DESIGNED	AJP	DATE	MAY 2, 2008
CHECKED	VHY	EXAMINED	<i>Carl Perry</i>
DRAWN	Steffen	PREPARED	<i>Robert C. Anderson</i>
CHECKED	AJB	VHY	

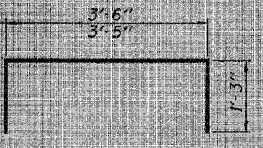


BAR S2(E)

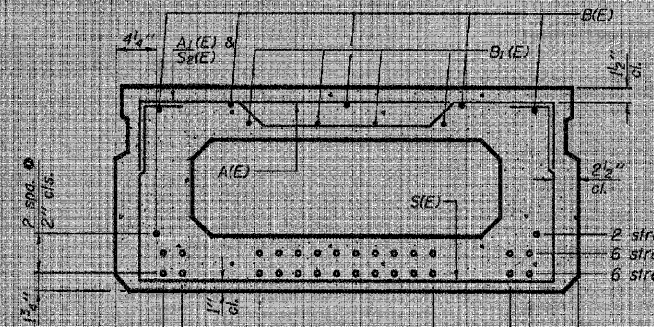
BAR S1(E)



BAR A1(E)

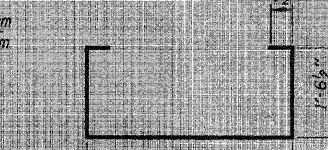


BAR U1(E)



SECTION A-A  
(Showing reinforcement and permissible strand locations)

Note: Place the number of strands specified in each row symmetrically about the centerline of beam in the permissible strand locations shown.



BAR U2(E)

BAR U1(E)

BAR LIST  
ONE 47" BEAM ONLY  
(For Information Only)

Bar	No.	Size	Length	Shape
A1(E)	12	#4	3'-6"	U
A2(E)	24	#4	3'-9"	U
B1(E)	10	#5	21'-6"	U
B2(E)	8	#4	21'-3"	U
S1(E)	58	#4	7'-4"	U
S2(E)	10	#4	5'-10"	U
S3(E)	48	#4	6'-1"	U
U1(E)	12	#5	4'-0"	U
U2(E)	4	#4	5'-11"	U

BAR LIST  
ONE 48" BEAM ONLY  
(For Information Only)

Bar	No.	Size	Length	Shape
A1(E)	12	#4	3'-7"	U
A2(E)	24	#4	3'-10"	U
B1(E)	10	#5	21'-6"	U
B2(E)	8	#4	21'-3"	U
S1(E)	58	#4	7'-5"	U
S2(E)	10	#4	5'-11"	U
S3(E)	48	#4	6'-2"	U
U1(E)	12	#5	4'-0"	U
U2(E)	4	#4	6'-0"	U

Bars indicated thus 4 x 2-#5 etc. indicates 4 line of bars with 2 lengths per line.  
Note: See sheet 4 of 6 for additional details and Bill of Material.

BEAM DETAILS  
FA 68 OVER SHORT POINT CREEK  
LIVINGSTON COUNTY  
SN 053-0161