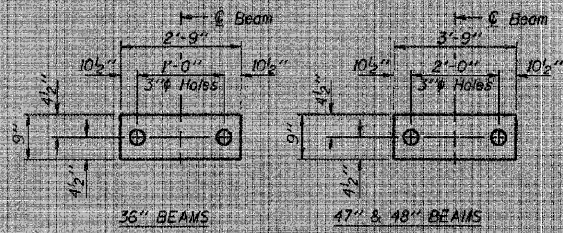
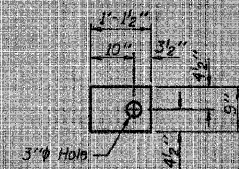


STATE OF ILLINOIS
DEPARTMENT OF TRANSPORTATION

PROJECT NO.	SECTION	SHEET	JOB	DATE	SHEET NO.
FA 68			LIVINGSTON	15	14
Contract Number: 65810					6 SHEETS

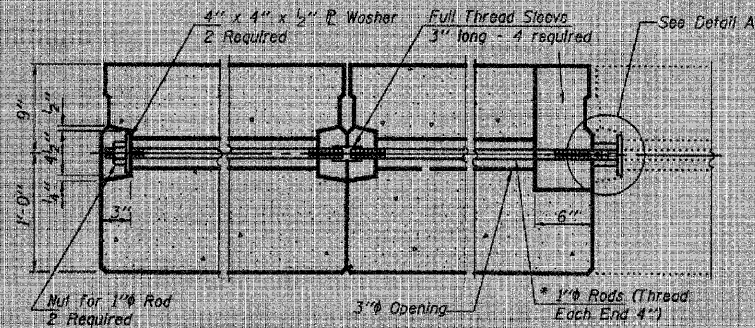


FABRIC BEARING PADS



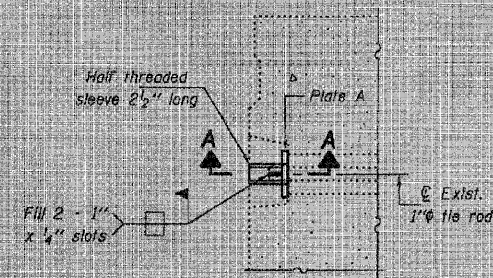
FABRIC ADJUSTING SHIM

6" x 6" x 1 1/2" Blockout to be filled with Class BS Concrete after Beams have been installed. Cast shall be included in the cost of Concrete Superstructure.

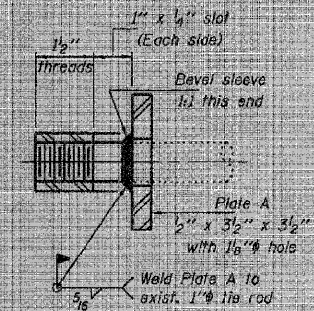


TYPICAL TRANSVERSE TIE ASSEMBLY

* 3'-0" for 36" Beams (2 Req'd)
* 3'-11" for 47" Beams (2 Req'd)
* 4'-0" for 48" Beams (2 Req'd)



DETAIL A



SECTION A-A
(4 Required)

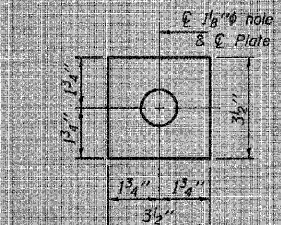
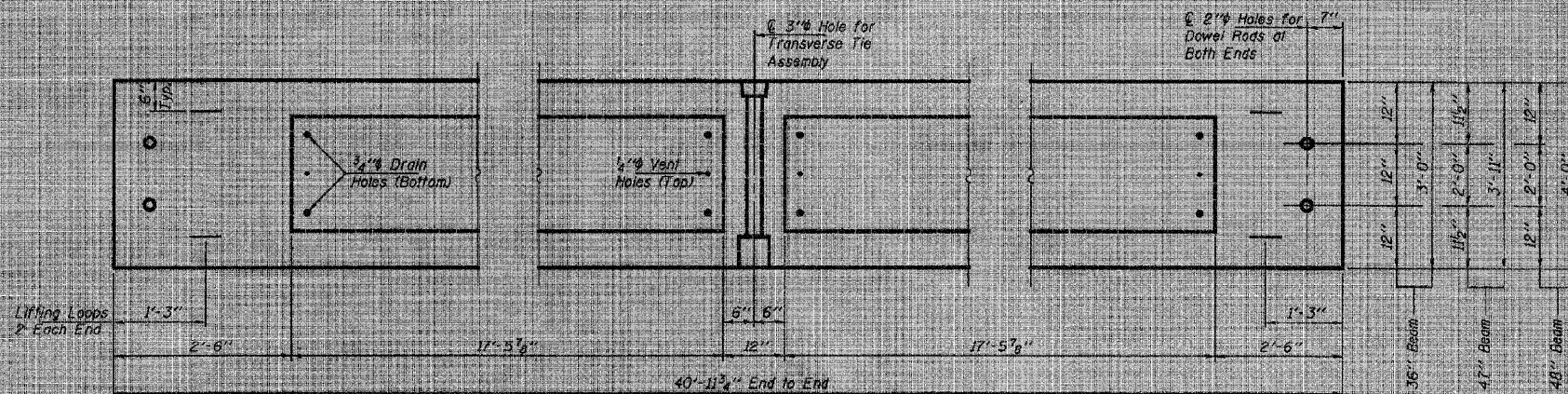


PLATE A
(4 Required)

BILL OF MATERIAL

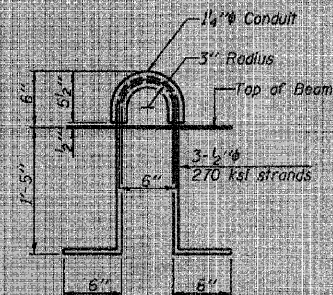
Precast Prestressed Conc. Deck Bms. (21" depth)	Sq. Ft.	894.7
---	---------	-------



BEAM PLAN

NOTES

Prestressing steel shall be uncoated high strength, low relaxation 7-wire strand, Grade 270. The nominal diameter shall be 1/2" and the nominal cross sectional area shall be 0.153 sq. in.
The 1/4" rods in the transverse tie assembly shall be tightened to a snug fit and the threads set. Pockets on exterior faces of bridge shall be filled with grout after transverse tie assembly is in place.
Reinforcement bars shall conform to ASTM A 706 (11 MOD), Grade 60. (See Special Provisions)
Two 1/2" fabric adjusting shims of the dimensions shown shall be provided for each bearing pad location.
A minimum 2 1/2" lifting pin shall be used to engage the lifting loops during handling.
Corrosion inhibitor, per Article 1020.05(a)(12) and 1021.06 of the Standard Specifications, shall be used in the concrete for precast prestressed concrete deck beams.
Compressive strength of prestressed concrete, f'c, shall be 6000 psi.
Compressive strength of prestressed concrete at release, f'ci, shall be 5000 psi.



LIFTING LOOP DETAIL

BEAM DETAILS
FA 68 OVER SHORT POINT CREEK
LIVINGSTON COUNTY
SN 053-0161

DESIGNED	AJB
CHECKED	VHV
DRAWN	Steffen
CHECKED	AJB VHV

DESIGNED BY: *AJB*
CHECKED BY: *VHV*
DRAWN BY: *Steffen*
DATE: MAY 2, 2008
PROJECT: *State of Illinois*
ENGINEER OF BRIDGES AND STRUCTURES

FILE NAME =	USER NAME = IDOTCAD	DESIGNED - SPF	REVISED -
W:\2299-03 - IL Route 23 Roadway\DGN\CADD Sheets\036822-Existing Structure Plans	DRAWN - AJP	REVISED -	
PLOT SCALE = 0.2100" / in.	CHECKED - JMS	REVISED -	
PLOT DATE = 8/2/2010	DATE - 08/05/10	REVISED -	

STATE OF ILLINOIS
DEPARTMENT OF TRANSPORTATION

EXISTING BRIDGE PLANS
FOR INFORMATION ONLY

SCALE: NONE SHEET NO. 13 OF 15 SHEETS STA. TO STA.

F.A. RTE.	SECTION	COUNTY	TOTAL SHEETS	SHEET NO.
68	(102) BR-1	LIVINGSTON	58	50
CONTRACT NO. 66822			ILLINOIS FED. AID PROJECT	