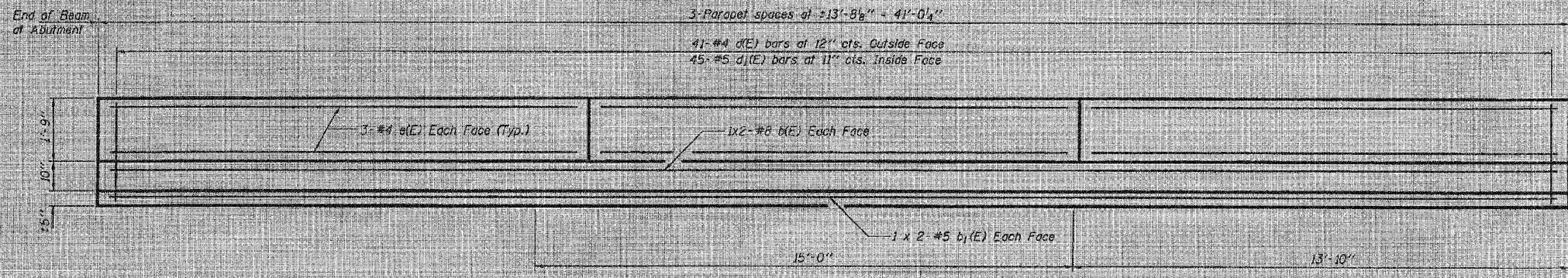


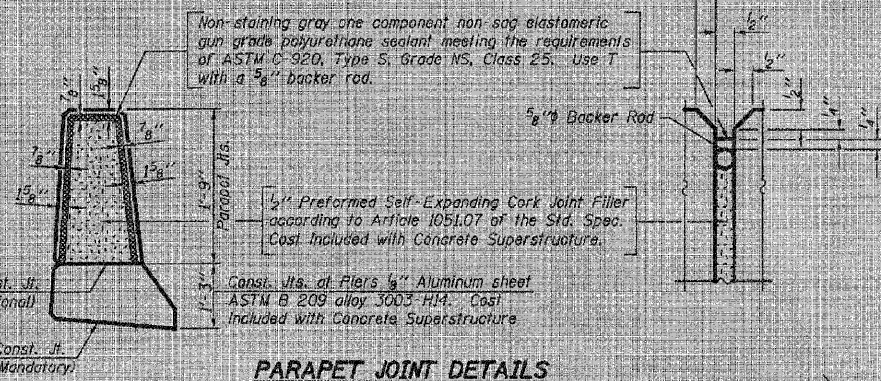
STATE OF ILLINOIS  
DEPARTMENT OF TRANSPORTATION

PROJECT NO.	SECTION	SHEET NO.	TOTAL SHEETS
FA 68	(102) BR-1	16	6 SHEETS

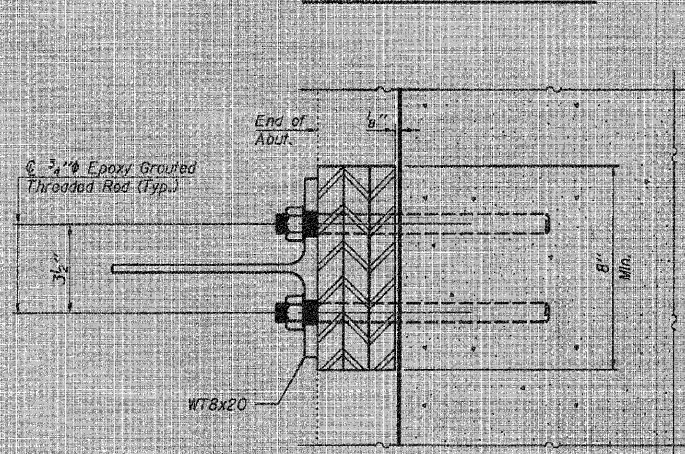
Contract Number: 66820



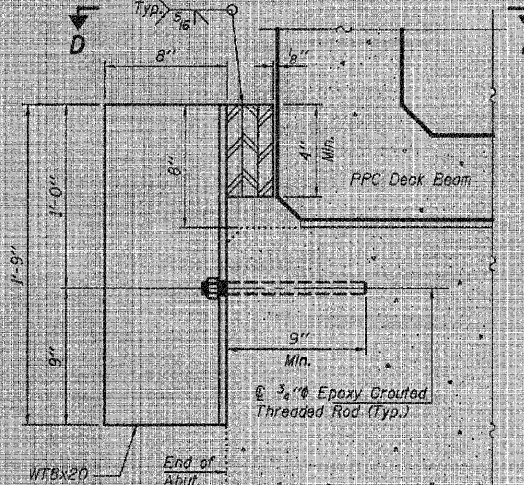
INSIDE ELEVATION OF PARAPET  
(Span 1 shown, Span 3 similar)



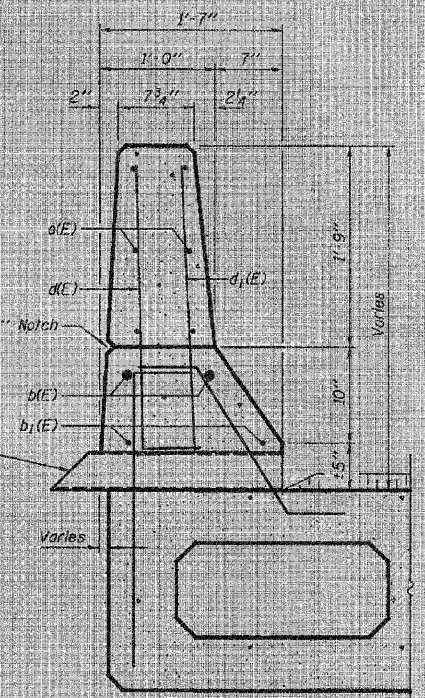
PARAPET JOINT DETAILS



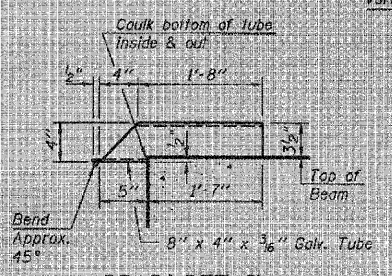
SECTION D-D



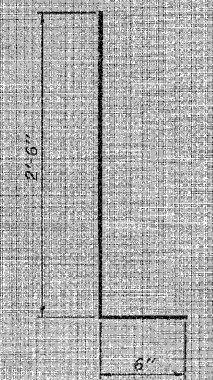
EXPANSION JOINT  
RETAINER DETAILS  
(Cost Included with PPC Deck Beams)



SECTION THRU PARAPET



DRAIN DETAIL



BAR d(E) & d1(E)

MIN. BAR LAP  
#5 Bar = 1'-8"  
#8 Bar = 3'-5"

BILL OF MATERIAL

Bar	No.	Size	Length	Shape
d(E)	8	#8	22'-2"	
b1(E)	8	#5	27'-3"	
d(E)	82	#4	3'-0"	
d1(E)	90	#5	3'-0"	
e(E)	36	#4	13'-5"	
Concrete Removal		Cu. Yd.	9.3	
Concrete Superstructure		Cu. Yd.	9.3	
Reinforcement Bars, Epoxy Coated		Pounds	1420	

Bars indicated thus 1 x 2 #5 etc. indicate 1 line of bars with 2 lengths per line.

REPAIR DETAILS  
FA 68 OVER SHORT POINT CREEK  
LIVINGSTON COUNTY  
SN 053-0161

DESIGNED	AJB
CHECKED	VHY
DRAWN	Steffen
CHECKED	AJB VHY

MAY 2, 2008  
EXAMINED  
PASSED

c:\projects\kms\0530161.dgn 5/2/2008 9:43:42 AM