

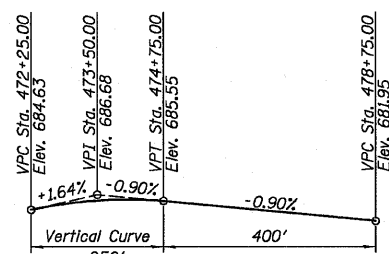
STATE OF ILLINOIS
DEPARTMENT OF TRANSPORTATION

TOTAL BILL OF MATERIAL

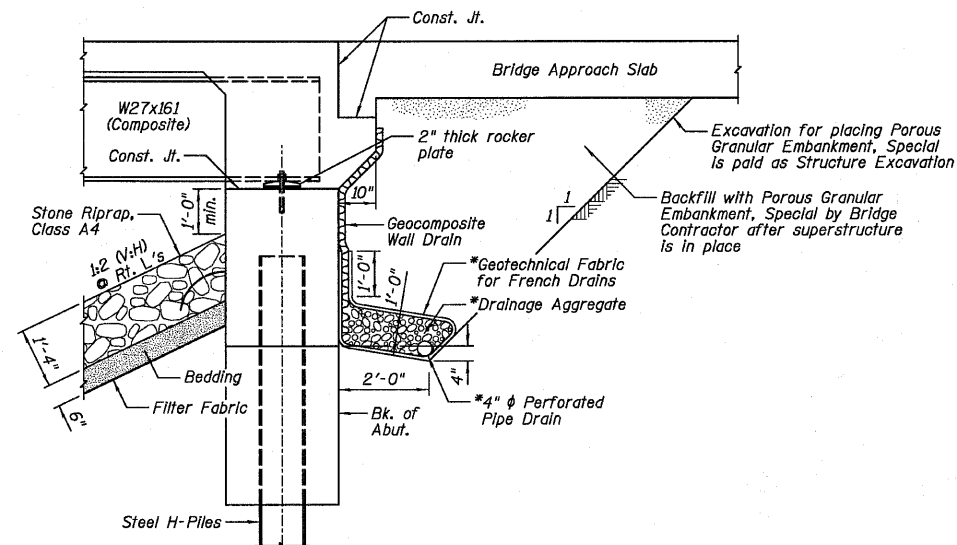
ITEM	UNIT	SUPER	SUB	TOTAL
Porous Granular Embankment, Special	Cu. Yd.		98	98
Stone Riprap, Class A4	Sq. Yd.		1,920	1,920
Filter Fabric	Sq. Yd.		1,920	1,920
Removal of Existing Structures	Each	1		1
Structure Excavation	Cu. Yd.		185	185
Floor Drains	Each	10		10
Concrete Structures	Cu. Yd.	20.4	130.4	150.8
Concrete Superstructure	Cu. Yd.	375.6		375.6
Bridge Deck Grooving	Sq. Yd.	898		898
Concrete Encasement	Cu. Yd.		17.6	17.6
Protective Coat	Sq. Yd.	1,188		1,188
Furnishing and Erecting Structural Steel	L Sum	1		1
Stud Shear Connectors	Each	4,986		4,986
Reinforcement Bars, Epoxy Coated	Pound	83,650	13,130	96,780
Bar Splacers	Each	906	120	1,026
Furnishing Steel Piles HP14x73	Foot		1,051	1,051
Driving Piles	Foot		1,051	1,051
Test Pile Steel HP14x73	Each		2	2
Pile Shoes	Each		7	7
Name Plates	Each	1		1
Anchor Bolts, 1"	Each	48		48
Geocomposite Wall Drain	Sq. Yd.		56	56
Pipe Underdrains for Structures 4"	Foot		142	142
Asbestos Bearing Pad Removal	Each	18		18
Temporary Soil Retention System	Sq. Ft.	498		498
Underwater Structure Excavation Protection - Location 1	Each		1	1
Underwater Structure Excavation Protection - Location 2	Each		1	1
Mechanical Splacers	Each		36	36

STATION 473+87.00
BUILT 20__ BY
STATE OF ILLINOIS
F.A.P. RT. 317 SEC. (25)BR-2
LOADING HL-93
STRUCTURE NO. 053-0188

NAME PLATE
See Std. 515001



PROFILE GRADE
(Along & Roadway)

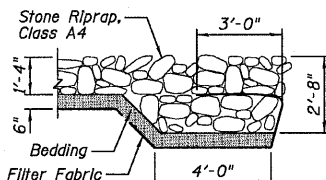


SECTION THRU EAST ABUTMENT
(Similar for West Abutment)

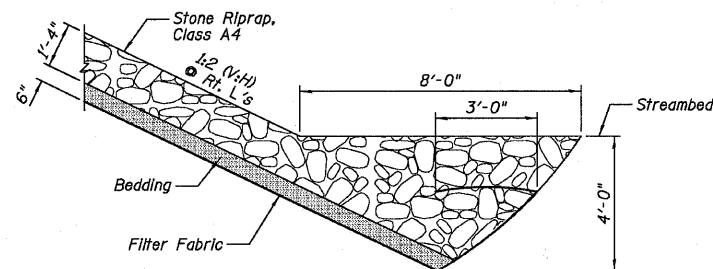
- NOTES:
- 1.) Horizontal dimensions @ Rt. L's to Abutment.
 - 2.) *Included in the cost of Pipe Underdrains for Structures 4".
 - 3.) All drainage system components shall extend to 2'-0" from the end of each wingwall except an outlet pipe shall extend until intersecting with the side slopes. The pipes shall drain into concrete headwalls. (See Article 601.05 of the Standard Specifications and Highway Standard 60110)

GENERAL NOTES:

- 1.) Fasteners shall be AASHTO M164 Type 1, mechanically galvanized bolts (in painted areas and M164 Type 3 in unpainted areas). Bolts 5/8" in. ϕ , holes 5/8" in. ϕ , unless otherwise noted.
- 2.) Calculated weight of Structural Steel = 245,690 lb.
- 3.) All structural steel shall be AASHTO M270 Grade 50W. All structural steel shall be cleaned as specified in the Special Provision for "Surface Preparation and Painting Requirements for Weathering Steel".
- 4.) No field welding is permitted except as specified in the contract documents.
- 5.) Reinforcement bars shall conform to the requirements of ASTM A 706 Gr 60. See Special Provisions.
- 6.) Reinforcement bars designated (E) shall be epoxy coated.
- 7.) If the Contractor elects to use cantilever forming brackets on the exterior beams or girders, the brackets shall be placed at the same locations as required for the hardwood blocks in Article 503.06(b) of the Standard Specifications. If additional cantilever forming brackets are required, hardwood blocking shall be wedged between the exterior and first interior beam at each of these additional bracket locations.
- 8.) Bearing seat surfaces shall be constructed or adjusted to the designated elevations within a tolerance of 1/8 in. (0.01 ft.). Adjustment shall be made either by grinding the surface or by shimming the bearings.
- 9.) Structural steel shall only be painted for a distance equal to the depth of embedment into the concrete cap plus 3 in. Painted areas shall be primed in the shop with a Department approved zinc rich primer. Field painting will not be required.
- 10.) Layout of the slope protection system may be varied to suit ground conditions in the field as directed by the Engineer.
- 11.) Slipforming of parapets is not allowed.
- 12.) The Contractor is advised that the existing structure contains members that are in a deteriorated condition with reduced load carrying capacity. It is the Contractor's responsibility to account for the condition of the existing structure when developing construction procedures for the complete or partial removal, or replacement of the structure.



SECTION A-A



SECTION B-B

WATERWAY INFORMATION

Flood	Freq. Yr.	Q C.F.S.	Opening Sq. Ft.		Nat. H.W.E.	Head - Ft.		Headwater El.	
			Exlst.	Prop.		Exlst.	Prop.	Exlst.	Prop.
Design	10	3850	1256	1370	678.3	0.2	0.1	678.5	678.4
Base	100	7040	1480	1852	680.6	0.5	0.2	681.1	680.8
Ex. Overtop	75	6500	1480	-	680.2	0.4	-	680.6	-
Pr. Overtop	75	6600	-	1788	680.3	-	0.2	-	680.5

10 Yr. Velocity = 3.1 ft/sec. (Existing)
10 Yr. Velocity = 2.8 ft/sec. (Proposed)

SCOUR INFORMATION

Design Scour Elevation	West Abutment	Pier 1	Pier 2	East Abutment
	678.35	659.83	659.83	678.38

INDEX OF SHEETS

SHEET NO.	TITLE
B1	GENERAL PLAN AND ELEVATION
B2	GENERAL DATA
B3	STAGE CONSTRUCTION
B4	TEMPORARY CONCRETE BARRIER FOR STAGE CONSTRUCTION
B5	TOP OF SLAB ELEVATION LOCATIONS
B6-B7	TOP OF SLAB ELEVATIONS
B8	TOP OF APPROACH SLAB ELEVATIONS
B9	SUPERSTRUCTURE DECK
B10	SUPERSTRUCTURE DETAILS
B11	DIAPHRAGM DETAILS
B12-B13	BRIDGE APPROACH SLAB DETAILS
B14-B15	STRUCTURAL STEEL
B16	FIXED BEARING DETAILS
B17	WEST ABUTMENT
B18	EAST ABUTMENT
B19	PIER NO. 1
B20	PIER NO. 2
B21	HP PILE DETAILS
B22	BAR SPLICER ASSEMBLY AND MECHANICAL SPLICER DETAILS
B23	CANTILEVER FORMING BRACKETS FOR SUPERSTRUCTURES WITH W27 BEAMS AND SMALLER
B24-B26	SOIL BORING LOGS

GENERAL DATA
STRUCTURE NO. 053-0188

DESIGNED SDH
CHECKED JML
DRAWN DJM
CHECKED MSW

DATE 08/13/10

Farnsworth
GROUP, INC.
2709 McGraw Drive
Bloomington, Illinois 61704
309/663-8435, 309/663-1571 fax

SHEET NO. B2
26 SHEETS

F.A.P. RTE.	SECTION	COUNTY	TOTAL SHEETS	SHEET NO.
317	(25)BR-2	LIVINGSTON	58	25
CONTRACT NO. 66823				
FED. ROAD DIST. NO.	ILLINOIS	FED. AID PROJECT		