

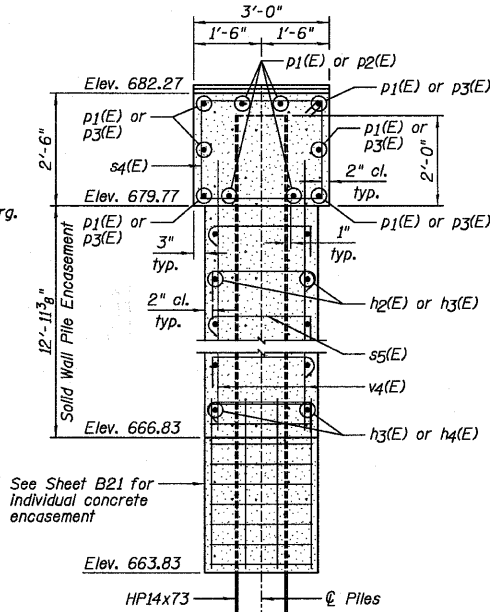
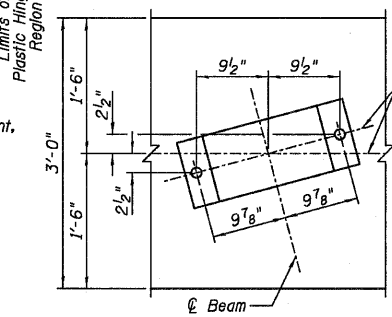
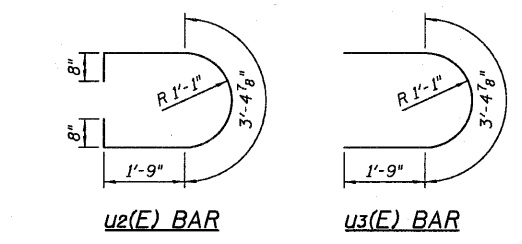
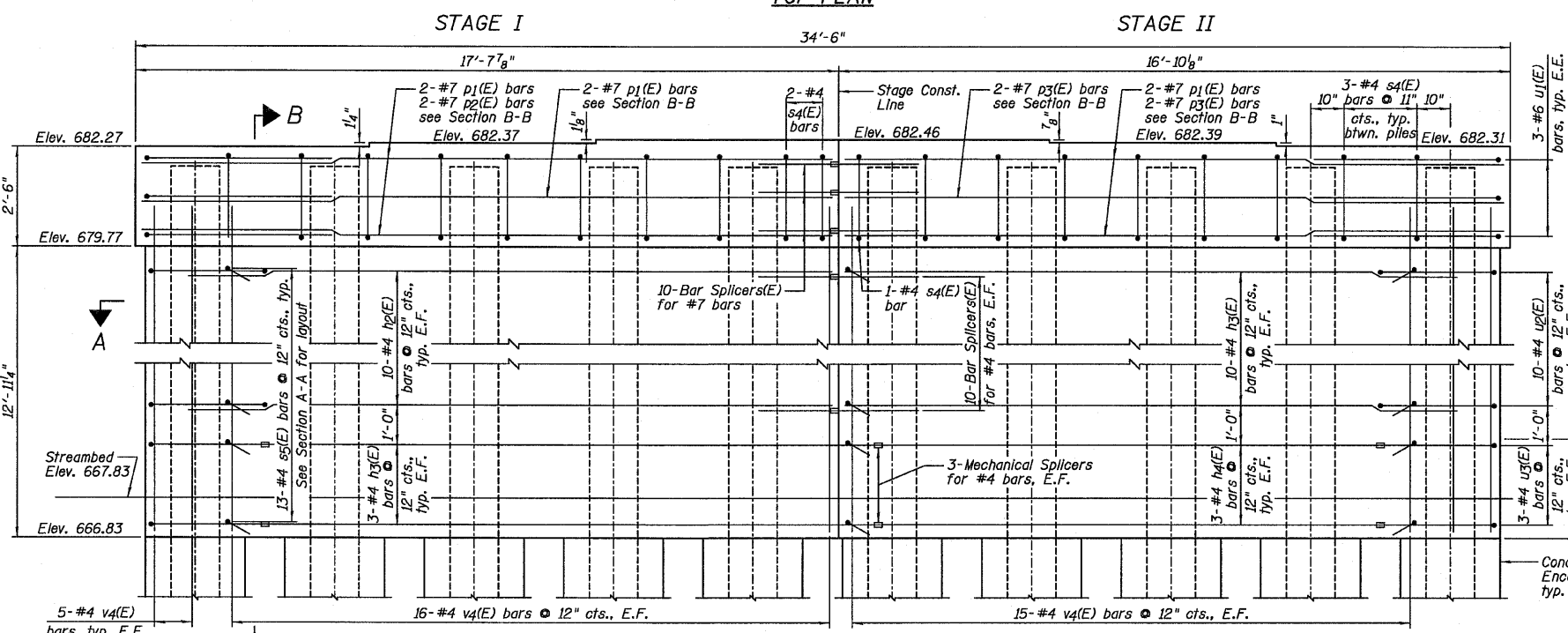
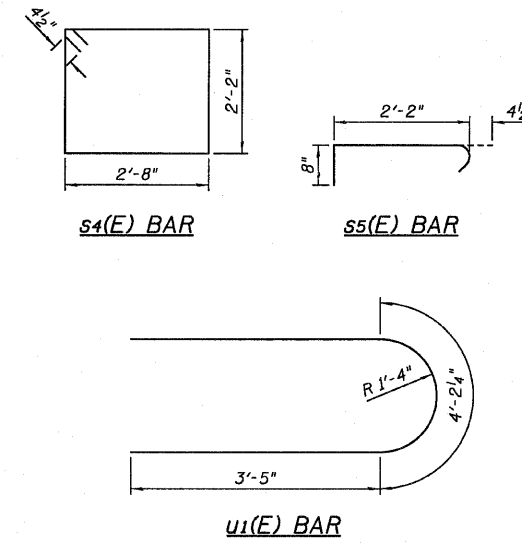
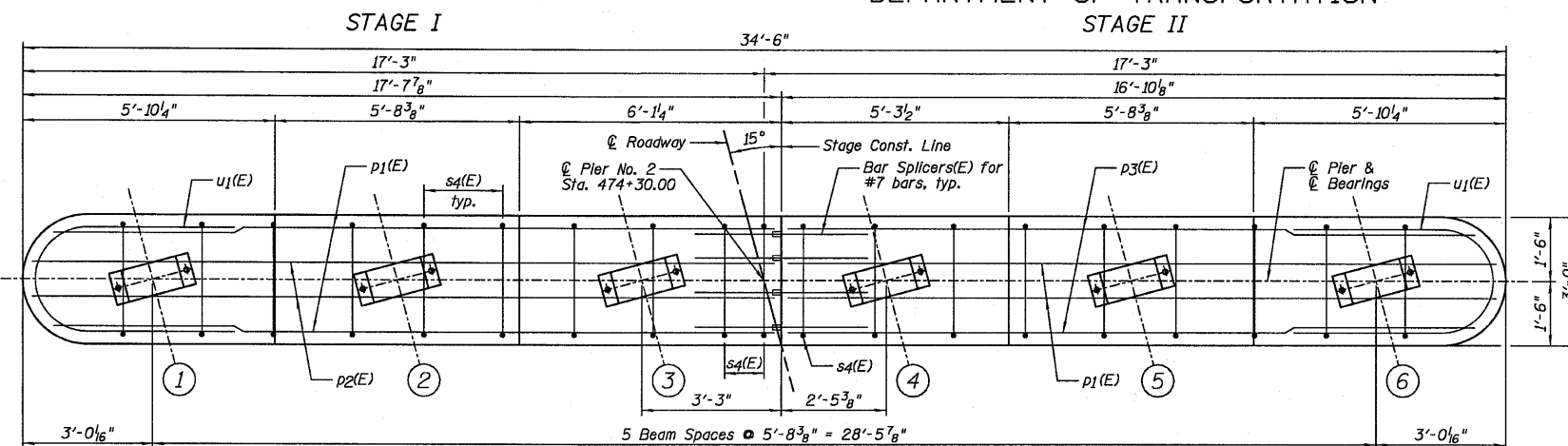
STATE OF ILLINOIS
DEPARTMENT OF TRANSPORTATION

PIER NO. 2
BILL OF MATERIAL

Bar	No.	Size	Length	Shape
h2(E)	20	#4	16'-3"	—
h3(E)	26	#4	15'-5"	—
h4(E)	6	#4	12'-7"	—
p1(E)	10	#7	16'-4"	—
p2(E)	4	#7	17'-3"	—
p3(E)	6	#7	15'-6"	—
s4(E)	27	#4	10'-5"	□
s5(E)	234	#4	3'-3"	□
u1(E)	6	#6	11'-0"	U
u2(E)	18	#4	8'-3"	U
u3(E)	6	#4	6'-11"	U
v4(E)	72	#4	13'-9"	—
Item	Unit	Quantity		
Structure Excavation	Cu. Yd.	46		
Concrete Structures	Cu. Yd.	49.9		
Concrete Encasement	Cu. Yd.	5.5		
Reinforcement Bars, Epoxy Coated	Pound	2,790		
Furnishing Steel Piles HP14x73	Foot	378		
Driving Piles	Foot	378		
Test Pile Steel HP14x73	Each	1		
Bar Splacers	Each	30		
Underwater Structure Excavation Protection - Location 2	Each	1		
Mechanical Splacers	Each	18		

PILE DATA:

Pile Type and Size	Steel - HP14x73
Nominal Required Bearing	415 kips
Factored Resistance Available	191 kips
Estimated Pile Length	42 Feet
Number of Production Piles	9
Number of Test Piles	1



NOTES:

- 1.) Pour steps monolithically with cap.
- 2.) If a portion of the pier wall or concrete encasement is under water, reinforcement may be placed under water into forms. Concrete shall be tremied according to Article 503.08 of the Standard Specifications to an elevation 1'-0" above the water line at the time of construction.
- 3.) E.F. denotes Each Face and E.E. denotes Each End.
- 4.) See Sheet B22 for Bar Splicer Details.

DESIGNED	SDH
CHECKED	JML
DRAWN	DJM
CHECKED	MSW
DATE	08/13/10

Farnsworth GROUP, INC.
2709 McGraw Drive
Bloomington, Illinois 61704
309/663-8435, 309/663-1571 fax

SHEET NO. B20	F.A.P. RTE.	SECTION	COUNTY	TOTAL SHEETS	SHEET NO.
26 SHEETS	317	(25)BR-2	LIVINGSTON	58	43
			CONTRACT NO. 66823		
FED. ROAD DIST. NO.		ILLINOIS FED. AID PROJECT			

PIER NO. 2
STRUCTURE NO. 053-0188