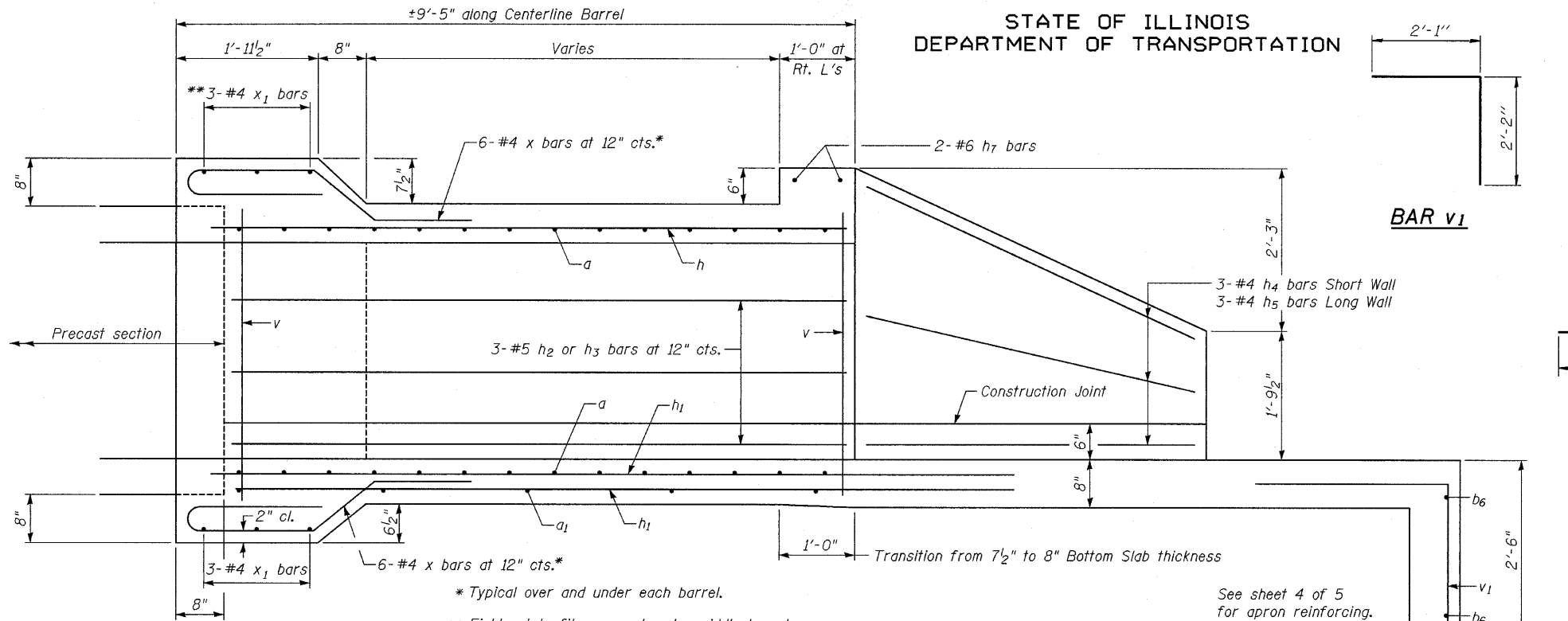
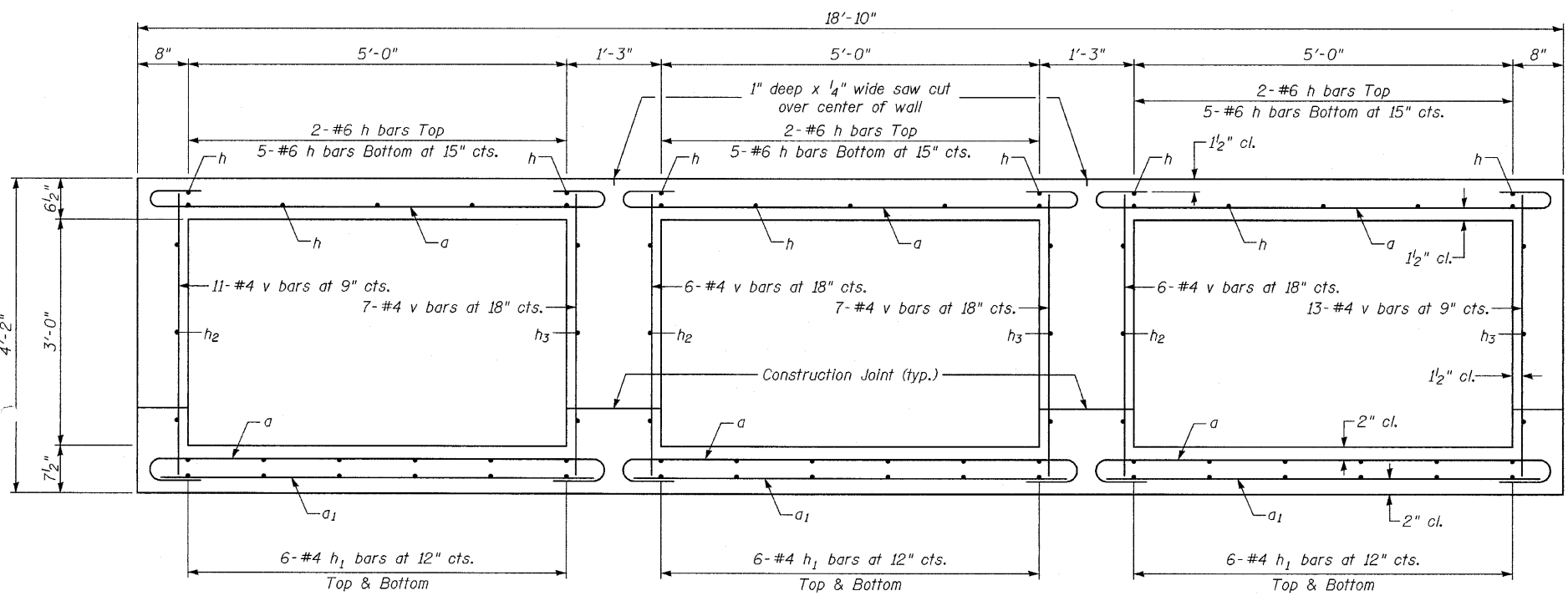


STATE OF ILLINOIS
DEPARTMENT OF TRANSPORTATION



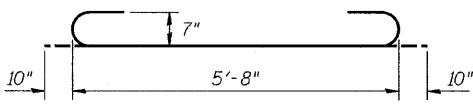
LONGITUDINAL SECTION

* Typical over and under each barrel.
** Field cut to fit over and under middle barrel.

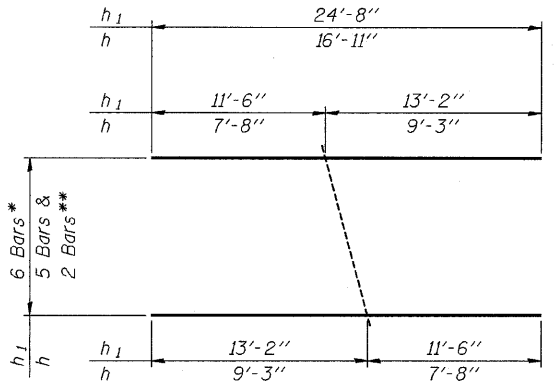
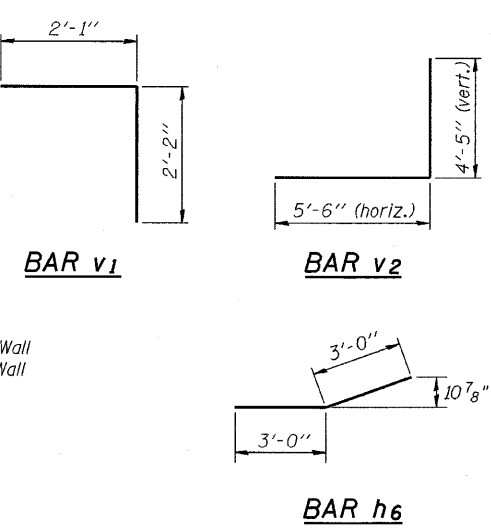


SECTION THRU BARREL

(Looking away from roadway)



BAR a



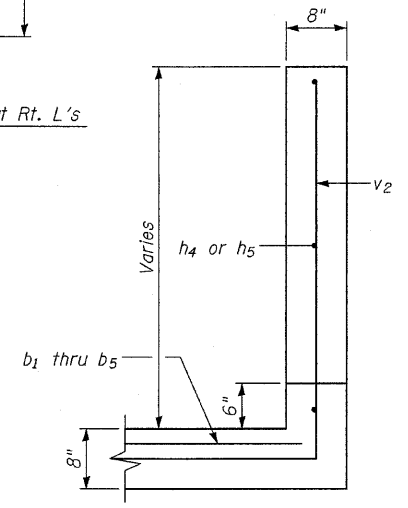
* Repeat 6 times for bottom bars below each barrel.
** Repeat both 3 times for top slab. Use remainder at opposite end of box.

BAR CUTTING DIAGRAM BAR h & h₁

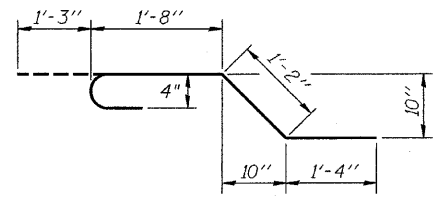
BILL OF MATERIAL
(2 CAST-IN-PLACE ENDS)

Bar	No.	Size	Length	Shape
a	180	#7	7'-4"	U
a ₁	30	#4	5'-8"	—
b ₁	2	#4	19'-7"	—
b ₂	2	#4	20'-8"	—
b ₃	2	#4	21'-8"	—
b ₄	2	#4	22'-9"	—
b ₅	2	#4	23'-10"	—
b ₆	4	#4	24'-6"	—
h	21	#6	16'-11"	—
h ₁	36	#4	24'-8"	—
h ₂	18	#6	7'-8"	—
h ₃	18	#6	9'-3"	—
h ₄	6	#4	8'-0"	—
h ₅	6	#4	9'-6"	—
h ₆	12	#5	6'-0"	—
h ₇	12	#6	6'-0"	—
v	100	#4	3'-10"	—
v ₁	32	#4	4'-3"	—
v ₂	32	#5	9'-11"	L
x	92	#4	5'-5"	—
x ₁	36	#4	6'-4"	—
x ₂	12	#4	5'-0"	—
Concrete Box Culverts			Cu. Yd.	41.1
Reinforcement Bars			Pound	6060

See sheet 4 of 5 for additional details.



SECTION THRU WINGWALL



BARS x

BOX CULVERT DETAILS
STRUCTURE NO. 053-2576

DESIGNED	JKC
CHECKED	AJO
DRAWN	LAG
CHECKED	JKC

SHEET NO. 3 5 SHEETS	F.A.P. RTE. 681	SECTION (115)I	COUNTY LIVINGSTON	TOTAL SHEETS 20	SHEET NO. 12
	CONTRACT NO. 66870				
ILLINOIS FED. AID PROJECT					