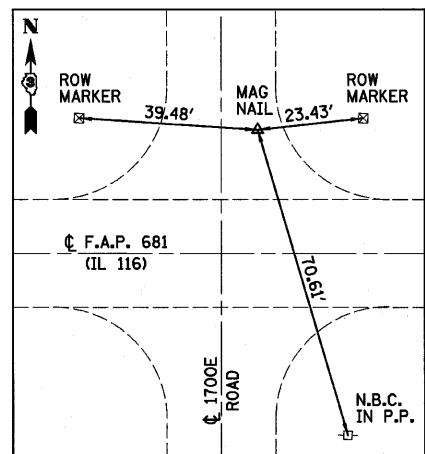
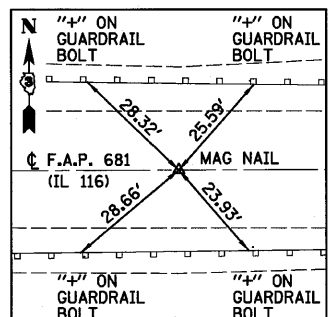


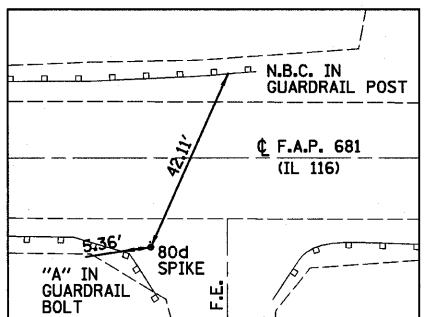
CURVE DATA
 PI STA. = 176+99.99
 Δ = 0° 31' 01" (RT)
 D = 0° 03' 06"
 R = 110,894.31'
 T = 500.22'
 L = 1,000.44'
 E = 1.13'
 P.C. STA. = 171+99.76
 P.T. STA. = 182+00.20



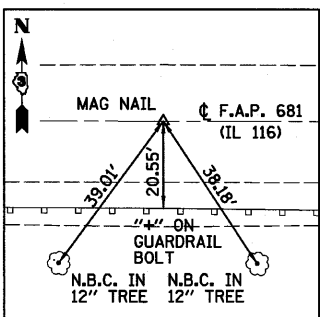
CONTROL POINT
 STA 159+35.67, 27.46' LT
 N = 1534650.233
 E = 1035479.413
 ELEV = 657.133



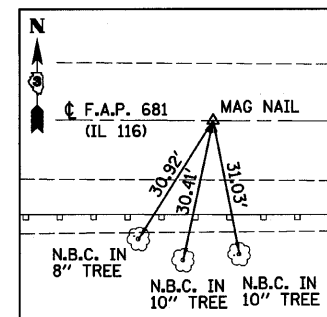
IL 116
 STA 171+99.76
 N = 1534668.456
 E = 1036743.563



CONTROL POINT
 STA 175+89.35, 19.74' RT
 N = 1534662.740
 E = 1037133.574
 ELEV = 659.751



IL 116
 STA 176+99.99
 N = 1534687.322
 E = 1037243.431



IL 116
 STA 182+00.20
 N = 1534701.678
 E = 1037743.450

BENCHMARK
 STA 172+39, 41' LT
 80d SPIKE IN WOOD
 FENCE POST
 ELEV=654.96

BENCHMARK
 STA 174+94, 17' RT
 CHISELED "C" ON
 S.E. WINGWALL
 ELEV=659.90

BENCHMARK
 STA 182+06, 30' RT
 RAILROAD SPIKE IN 12" TREE
 SOUTH SIDE OF IL RTE 116
 ELEV=655.02

FILE NAME =	USER NAME = *USER*	DESIGNED - JML	REVISED -	STATE OF ILLINOIS DEPARTMENT OF TRANSPORTATION	ALIGNMENT, SURVEY TIES AND BENCHMARKS			F.A.P. RTE. 681	SECTION *	COUNTY FORD/IROQUOIS	TOTAL SHEETS 146	SHEET NO. 25
*FILE#	PLOT SCALE = *SCALE*	DRAWN - DJM	REVISED -					SCALE: SHEET NO. OF SHEETS STA. TO STA.			SN 027-0098 CONTRACT NO. 66880	
	PLOT DATE = *DATE*	CHECKED - MSW	REVISED -		FED. ROAD DIST. NO. ILLINOIS FED. AID PROJECT			* 116 BR/1116 BR, (BR-2)BR, I & BR-3J				
		DATE - 08/04/10	REVISED -		FARNSWORTH GROUP, INC.			CONSULTING ENGINEERS - 2709 MCGRAW DRIVE BLOOMINGTON, ILLINOIS 61704 (309) 663-8435 / (309) 663-1571 FAX			24-8271	