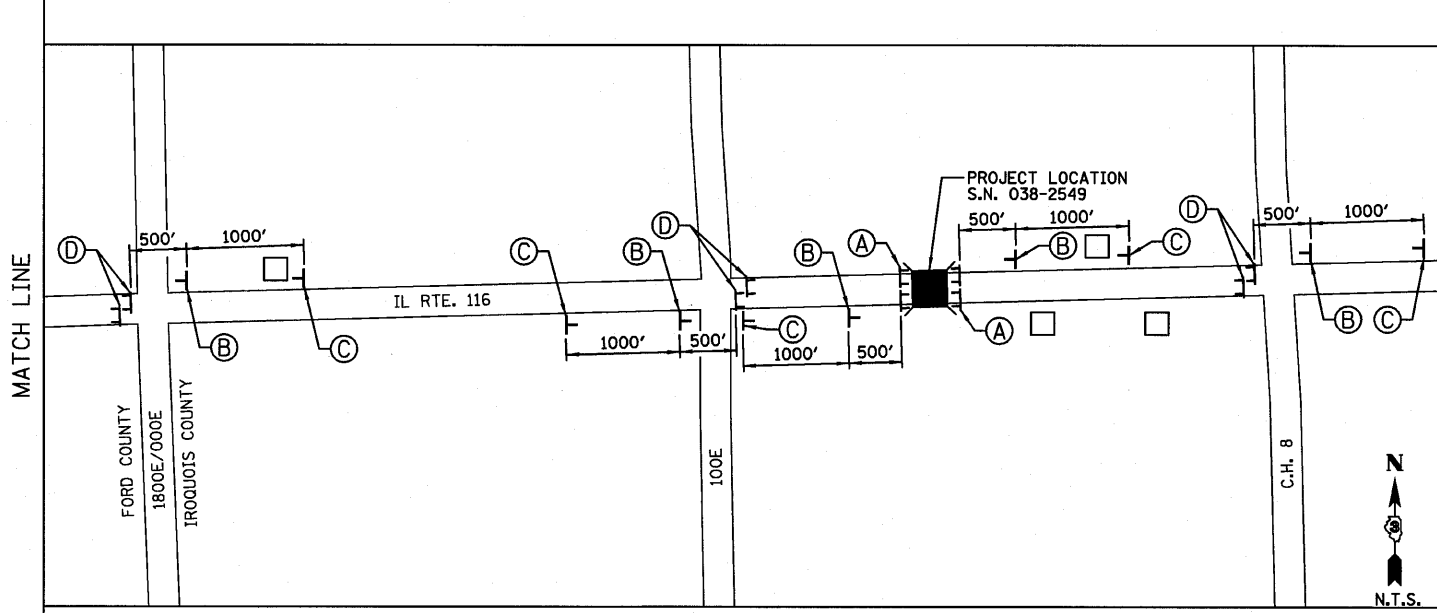
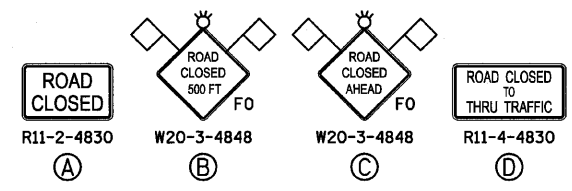


NOTE:
ROAD CLOSURE OF N. 1600E ROAD SHALL BE DONE IN ACCORDANCE WITH BLR 21.



**PROJECT LOCATION VICINITY
(DETAIL "E")**



- LEGEND**
- BUSINESS OR RESIDENCE
 - TT TYPE III BARRICADES CONFORMING TO STD. 701901 "ROAD CLOSED TO ALL TRAFFIC" WITH 2 FLASHING LIGHTS PER BARRICADE
 - TT TYPE III BARRICADES CONFORMING TO STD. 701901 "ROAD CLOSED TO THRU TRAFFIC" WITH 2 FLASHING LIGHTS PER BARRICADE
 - ⊥ SIGNS ON PERMANENT SUPPORTS
 - ⚡ FLASHING LIGHT ABOVE SIGN
 - ◇ 18"x18" ORANGE FLAG
 - FO FLORESCENT ORANGE

- NOTES:**
- 1.) ALL TRAFFIC CONTROL DEVICES SHALL BE FURNISHED, ERECTED AND MAINTAINED BY THE CONTRACTOR.
 - 2.) ALL SIGNS NOT ATTACHED TO BARRICADES SHALL BE POST MOUNTED, UNLESS OTHERWISE NOTED.
 - 3.) LOCATIONS OF TRAFFIC CONTROL DEVICES MAY BE ADJUSTED BY THE ENGINEER.
 - 4.) WORK SHALL BE DONE IN ACCORDANCE WITH BLR 21.
 - 5.) TRAFFIC CONTROL SHALL BE IN ACCORDANCE WITH THE STANDARD SPECIFICATIONS FOR ROAD AND BRIDGE CONSTRUCTION MANUAL FOR UNIFORM TRAFFIC CONTROL, HIGHWAY STANDARDS AND SPECIAL PROVISIONS.

FILE NAME =	USER NAME = #USER#	DESIGNED - JML	REVISED -	STATE OF ILLINOIS DEPARTMENT OF TRANSPORTATION	DETOUR PLAN			F.A.P. RTE. 681	SECTION *	COUNTY FORD/IROQUOIS	TOTAL SHEETS 146	SHEET NO. 39
#FILEL#	PLOT SCALE = #SCALE#	DRAWN - DJM	REVISED -		SCALE:	SHEET NO. OF SHEETS	STA. TO STA.	CONTRACT NO. 66880				
	PLOT DATE = #DATE#	CHECKED - MSW	REVISED -		FED. ROAD DIST. NO. ILLINOIS FED. AID PROJECT							
		DATE - 08/04/10	REVISED -		* 116 BR/L116 BR, (BR-2)BR, I & BR-3J							

FARNSWORTH GROUP, INC.

CONSULTING ENGINEERS - 2709 MCGRAW DRIVE BLOOMINGTON, ILLINOIS 61704 (309) 663-8435 / (309) 663-1571 FAX

24-8271