

SEC. 21 & 28, T. 28 N., R. 9 E., 3RD P.M.



**PARCEL 3VV0001**

STANLEY P. DIETZ, et al

TOTAL HOLDING = 91.550 AC. ±  
 TOTAL R.O.W. REQUIRED = 0.718 AC. ±  
 AREA IN EX. R.O.W. = 0.437 AC.  
 NET R.O.W. REQ'D. = 0.281 AC. ±  
 REMAINDER = 90.832 AC. ±

**PARCEL 3VV0002**

HERITAGE F-S, FORMERLY KNOWN AS  
 FORD COUNTY F-S, INC.

TOTAL HOLDING = 4.160 AC. ±  
 TOTAL R.O.W. REQUIRED = 0.149 AC. ±  
 AREA IN EX. R.O.W. = 0.000 AC.  
 NET R.O.W. REQ'D. = 0.149 AC. ±  
 REMAINDER = 4.011 AC. ±

**PARCEL 3VV0003**

JAMES A. WRIGHT, et al

TOTAL HOLDING = 28.000 AC. ±  
 TOTAL R.O.W. REQUIRED = 0.722 AC. ±  
 AREA IN EX. R.O.W. = 0.512 AC.  
 NET R.O.W. REQ'D. = 0.210 AC. ±  
 REMAINDER = 27.278 AC. ±

TEMPORARY EASEMENT = 0.197 AC. ±  
 PURPOSE: BERM CONSTRUCTION & GRADING

**PARCEL 3VV0004**

EVELYN RIEBE, LIFE ESTATE

TOTAL HOLDING = 140.000 AC. ±  
 TOTAL R.O.W. REQUIRED = 0.478 AC. ±  
 AREA IN EX. R.O.W. = 0.344 AC.  
 NET R.O.W. REQ'D. = 0.134 AC. ±  
 REMAINDER = 139.522 AC. ±

**SURVEYOR'S STATEMENT**

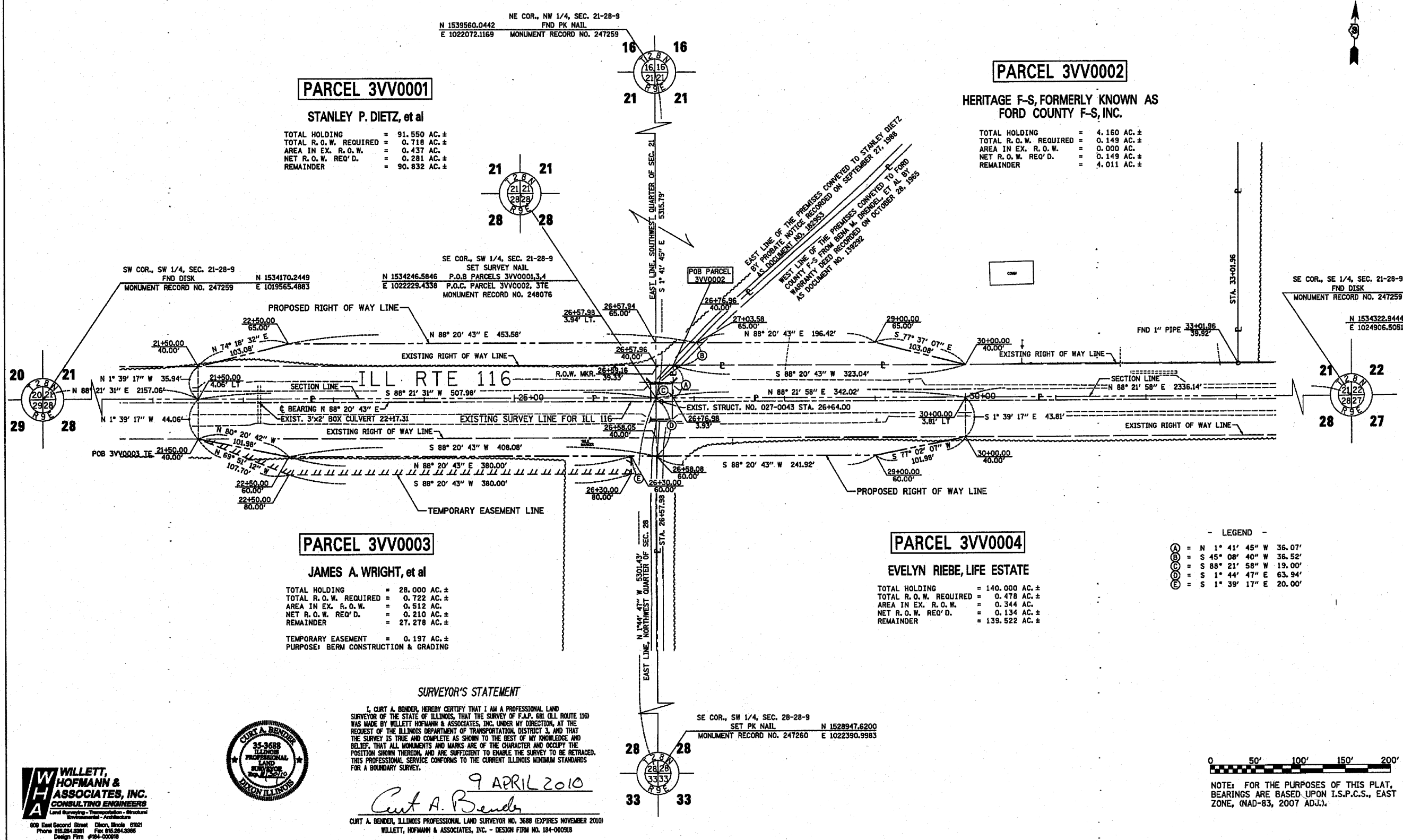
I, CURT A. BENDER, HEREBY CERTIFY THAT I AM A PROFESSIONAL LAND SURVEYOR OF THE STATE OF ILLINOIS, THAT THE SURVEY OF F.A.P. 681 (ILL. ROUTE 116) WAS MADE BY WILLET HOFMANN & ASSOCIATES, INC. UNDER MY DIRECTION, AT THE REQUEST OF THE ILLINOIS DEPARTMENT OF TRANSPORTATION, DISTRICT 3, AND THAT THE SURVEY IS TRUE AND COMPLETE AS SHOWN TO THE BEST OF MY KNOWLEDGE AND BELIEF, THAT ALL MONUMENTS AND MARKS ARE OF THE CHARACTER AND OCCUPY THE POSITION SHOWN THEREON, AND ARE SUFFICIENT TO ENABLE THE SURVEY TO BE RETRACED. THIS PROFESSIONAL SERVICE CONFORMS TO THE CURRENT ILLINOIS MINIMUM STANDARDS FOR A BOUNDARY SURVEY.

9 APRIL 2010  
 Curt A. Bender

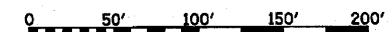
CURT A. BENDER, ILLINOIS PROFESSIONAL LAND SURVEYOR NO. 3688 (EXPIRES NOVEMBER 2010)  
 WILLET, HOFMANN & ASSOCIATES, INC. - DESIGN FIRM NO. 184-000918



930 East Second Street Dixon, Illinois 61021  
 Phone 815.284.5281 Fax 815.284.5285  
 Design Firm #184-000918  
 www.willett-hofmann.com



- LEGEND -
- (A) = N 1° 41' 45" W 36.07'
  - (B) = S 45° 08' 40" W 36.52'
  - (C) = S 88° 21' 58" W 19.00'
  - (D) = S 1° 44' 47" E 63.94'
  - (E) = S 1° 39' 17" E 20.00'



NOTE: FOR THE PURPOSES OF THIS PLAT, BEARINGS ARE BASED UPON I.S.P.C.S., EAST ZONE, (NAD-83, 2007 ADJ.).

FILE NAME	USER NAME * #USER#	DESIGNED -	REVISED -	STATE OF ILLINOIS DEPARTMENT OF TRANSPORTATION	RIGHT OF WAY PLANS		F.A.P. RTE.	SECTION	COUNTY	TOTAL SHEETS	SHEET NO.
#FILE#		DRAWN -	REVISED -		PROJECT	JOB NO. R-93-002-10	681	(116)BR	FORD	146	446
PLAT SCALE * #SCALE#		CHECKED - C B	REVISED -		SCALE: 1" = 50'	SHEET NO. 1 OF 1 SHEETS	ILLINOIS 116		CONTRACT NO. 668820		
PLAT DATE * #DATE#		DATE -	REVISED -		STA. 21+50.00 TO STA. 30+00.00		FED. ROAD DIST. NO. [ILLINOIS] FED. AID PROJECT				

V:\200908\0811\WILLET\_HOFMANN\_ASSOCIATES\_INC\0811\WILLET\_HOFMANN\_ASSOCIATES\_INC.dwg