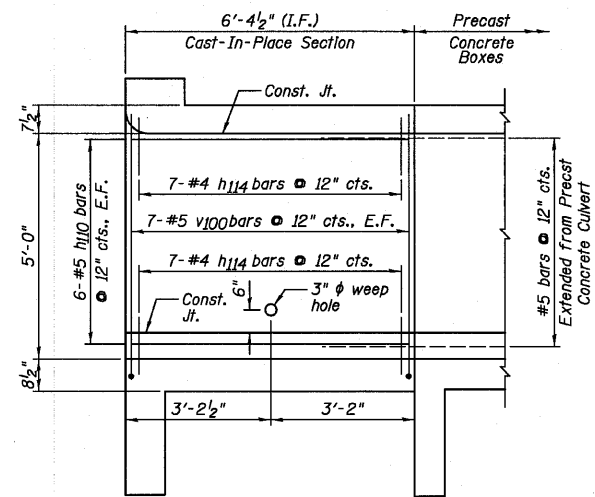
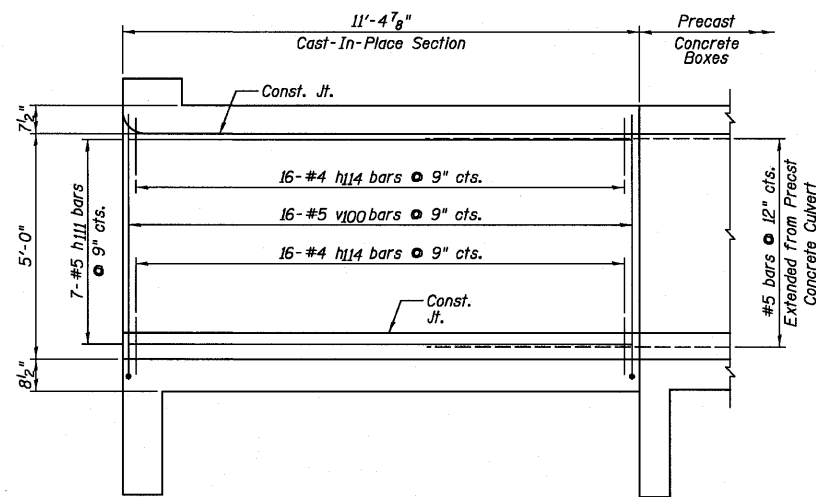


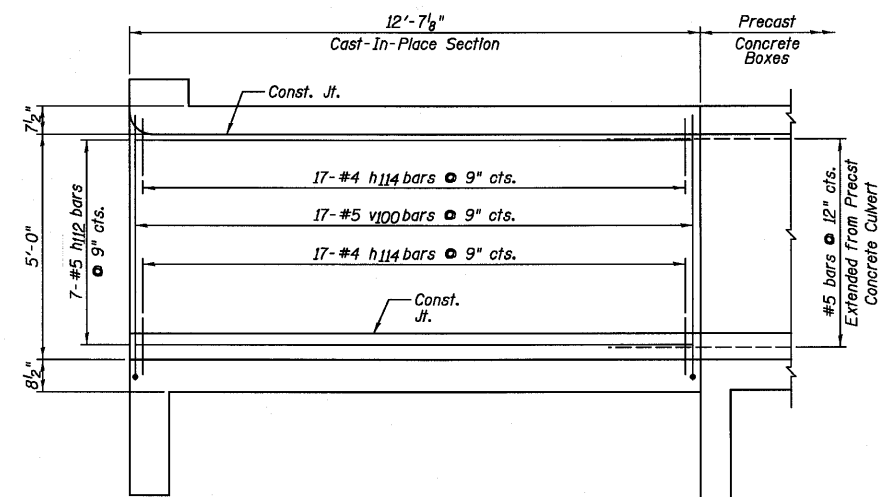
STATE OF ILLINOIS  
DEPARTMENT OF TRANSPORTATION



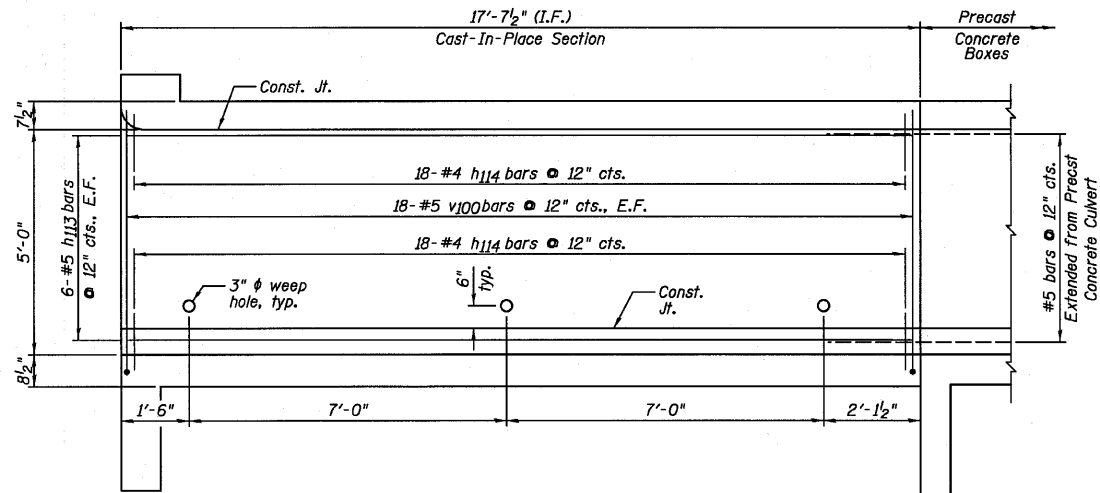
**NORTH EAST EXTERIOR WALL  
ELEVATION (SHORT)**



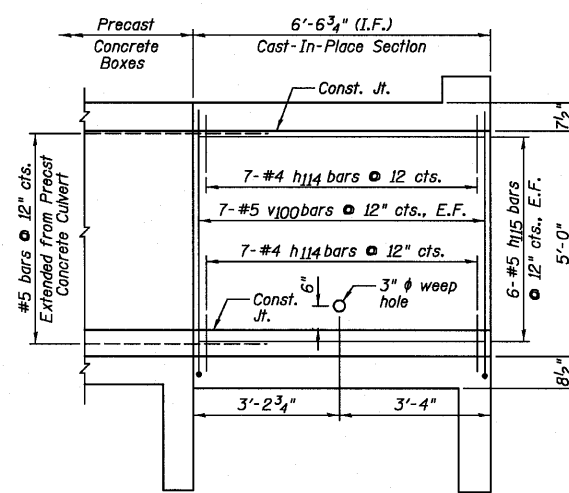
**NORTH INTERIOR WALL  
ELEVATION (SHORT) EAST FACE**



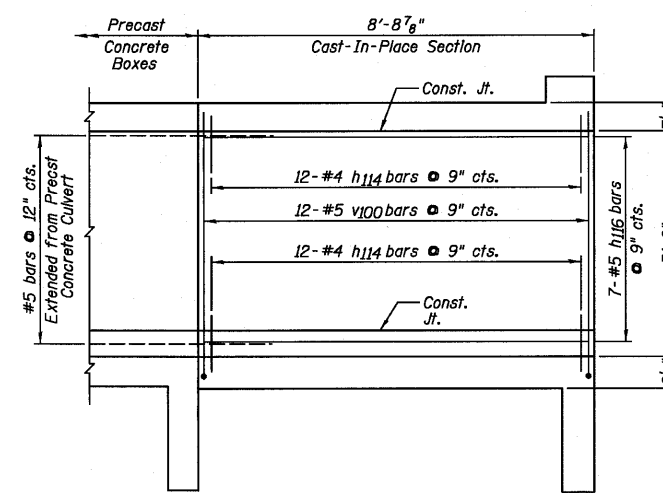
**NORTH INTERIOR WALL  
ELEVATION (LONG) WEST FACE**



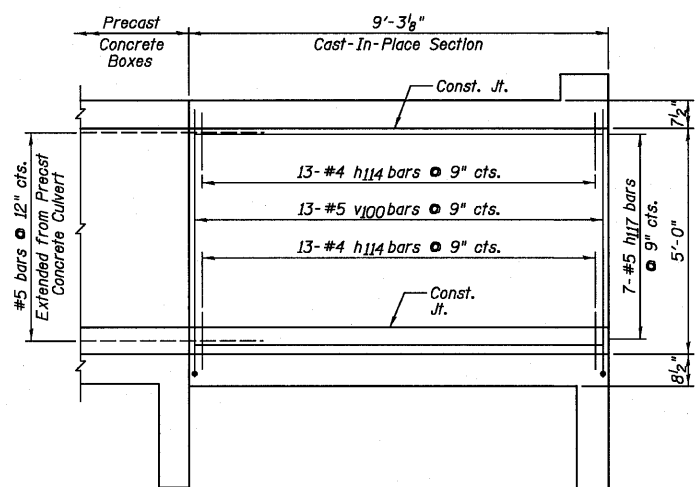
**NORTH WEST EXTERIOR WALL  
ELEVATION (LONG)**



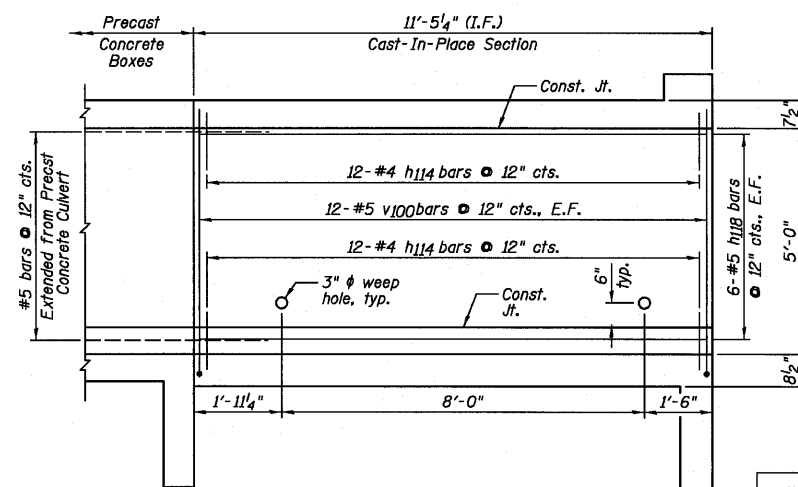
**SOUTH EAST EXTERIOR WALL  
ELEVATION (SHORT)**



**SOUTH INTERIOR WALL  
ELEVATION (SHORT) EAST FACE**



**SOUTH INTERIOR WALL  
ELEVATION (LONG) WEST FACE**



**SOUTH WEST EXTERIOR WALL  
ELEVATION (LONG)**

DESIGNED	SDH
CHECKED	JML
DRAWN	JWK/DJM
CHECKED	MSW

DATE 08/04/10

**NORTH AND SOUTH END  
CAST-IN-PLACE WALL SECTIONS  
STRUCTURE NO. 027-2553**

**Farnsworth**  
GROUP, INC.  
2709 McGraw Drive  
Bloomington, Illinois 61704  
309/683-8435, 309/683-1571 fax

SHEET NO. C4  
12 SHEETS

F.A.P. RTE.	SECTION	COUNTY	TOTAL SHEETS	SHEET NO.
681	*	FORD/IROQUOIS	146	59
FED. ROAD DIST. NO.		ILLINOIS FED. AID PROJECT		
		CONTRACT NO. 66880		

\* 116 BR/L116 BR, (BR-2)BR, I & BR-31

24-8271