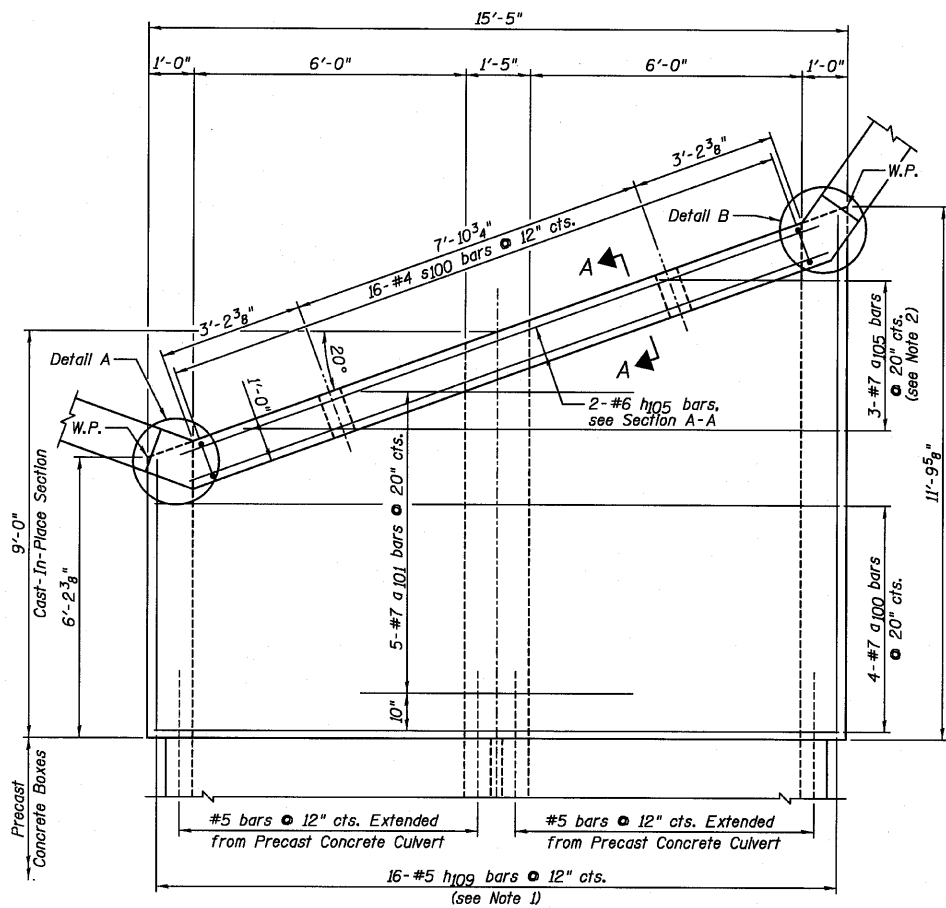
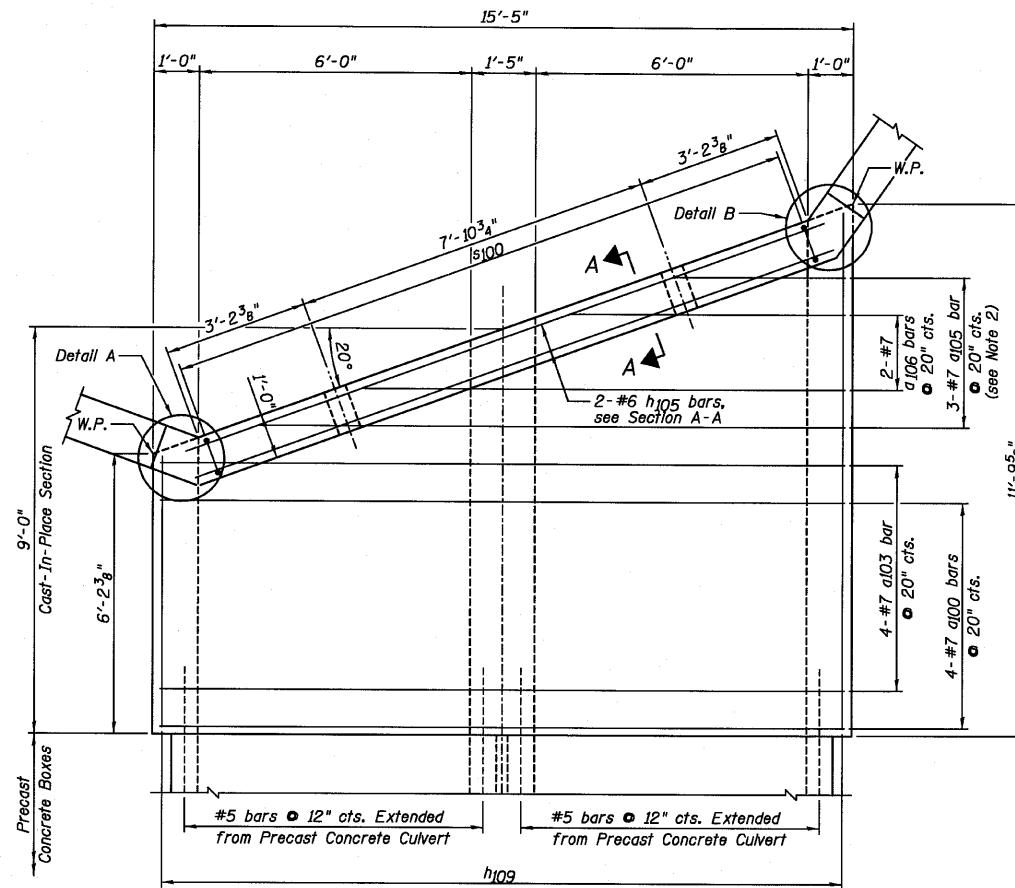


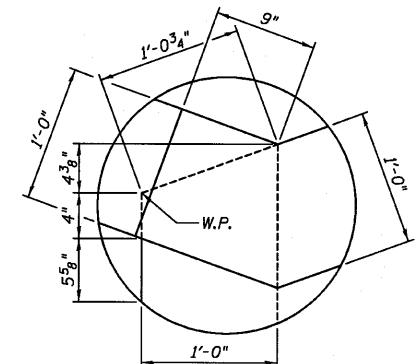
STATE OF ILLINOIS  
DEPARTMENT OF TRANSPORTATION



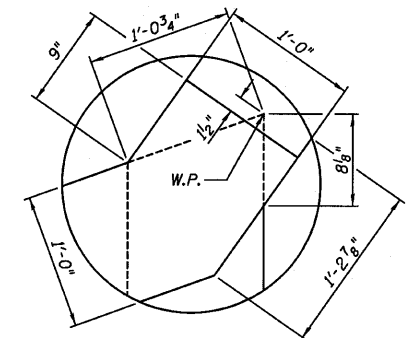
TOP MAT OF REINFORCEMENT PLAN



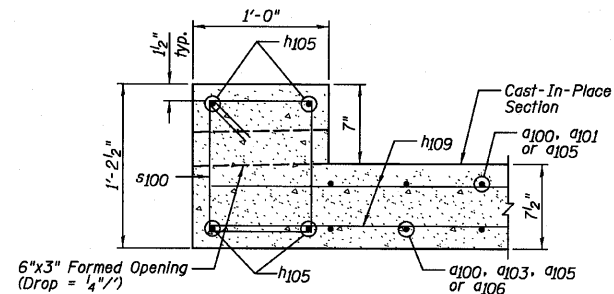
BOTTOM MAT OF REINFORCEMENT PLAN



DETAIL A



DETAIL B



SECTION A-A

NOTES:

- 1.) Order h109 bars full length, cut according to Bar Cutting Diagram on Sheet C5. Use remainder of bars in bottom mat.
- 2.) Order a105 and a106 bars full length, cut according to Bar Cutting Diagram on Sheet C5. Use remainder of bars in bottom slab.
- 3.) For Bill of Material, see Sheet C5.
- 4.) W.P. denotes Working Point.

SOUTH END CAST-IN-PLACE  
TOP SLAB PLANS,  
SECTION AND DETAILS  
STRUCTURE NO. 027-2553

DESIGNED	SDH
CHECKED	JML
DRAWN	JWK/DJM
CHECKED	MSW
DATE	08/04/10

**Farnsworth**  
GROUP, INC.  
2709 McGraw Drive  
Bloomington, Illinois 61704  
309/663-8435, 309/663-1571 fax

SHEET NO. C8  
12 SHEETS

F.A.P. RTE.	SECTION	COUNTY	TOTAL SHEETS	SHEET NO.
681	*	FORD/IROQUOIS	146	63
CONTRACT NO. 66880				
FED. ROAD DIST. NO.		ILLINOIS FED. AID PROJECT		