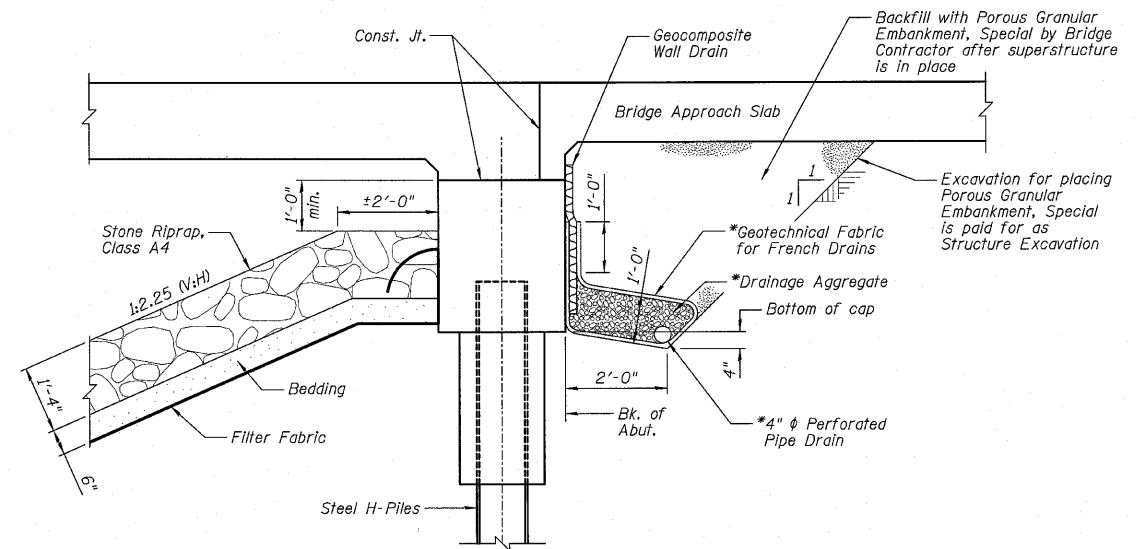


STATE OF ILLINOIS
DEPARTMENT OF TRANSPORTATION

TOTAL BILL OF MATERIAL

ITEMS	UNITS	SUPER	SUB	TOTAL
Porous Granular Embankment, Special	Cu. Yd.		60	60
Stone Riprap, Class A4	Sq. Yd.		970	970
Filter Fabric	Sq. Yd.		970	970
Removal of Existing Structures No. 5	Each	1		1
Structure Excavation	Cu. Yd.		174	174
Floor Drains	Each	8		8
Concrete Structures	Cu. Yd.		141.2	141.2
Concrete Superstructure	Cu. Yd.	317.2		317.2
Bridge Deck Grooving	Sq. Yd.	509		509
Concrete Encasement	Cu. Yd.		11.2	11.2
Protective Coat	Sq. Yd.	655		655
Reinforcement Bars, Epoxy Coated	Pound	67,880	7,480	75,360
Furnishing Steel Piles HP12x63	Foot		1,439	1,439
Driving Piles	Foot		1,439	1,439
Test Pile Steel HP12x63	Each		2	2
Name Plates	Each	1		1
Geocomposite Wall Drain	Sq. Yd.		36	36
Pipe Underdrains For Structures 4"	Foot		126	126
Underwater Structure Excavation Protection - Location 1	Each		1	1
Underwater Structure Excavation Protection - Location 2	Each		1	1



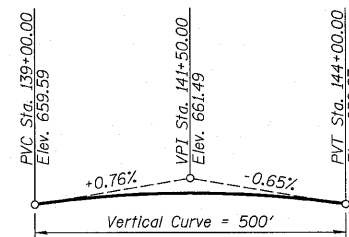
SECTION THRU EAST ABUTMENT
(Similar For West Abutment)

NOTES:

- 1.) Horizontal dimensions @ Rt. L's to Abutment.
- 2.) *Included in the cost of Pipe Underdrains for Structures 4".
- 3.) All drainage system components shall extend to 2'-0" from the end of each wingwall except an outlet pipe shall extend until intersecting with the side slopes. The pipes shall drain into concrete headwalls. (See Article 601.05 of the Standard Specifications and Highway Standard 601101).

GENERAL NOTES:

- 1.) Reinforcement bars shall conform to the requirements of ASTM A706 Gr. 60. See Special Provisions.
- 2.) Reinforcement bars designated (E) shall be epoxy coated.
- 3.) Layout of the slope protection system may be varied to suit ground conditions in the field as directed by the Engineer.
- 4.) The Contractor shall make allowance for the deflection of forms, shrinkage and settlement of falsework, in addition to allowance for dead load deflection. Forms for deck slab shall be removed prior to placement of bridge approach slab.
- 5.) Slipforming of parapets is not allowed.
- 6.) The Contractor is advised that the existing PPC deck beams are in a deteriorated condition with reduced load carrying capacity. It is the Contractor's responsibility to account for the condition of the beams when developing construction procedures for the removal and replacement of the structure.
- 7.) The pay item Removal of Existing Structures No. 5 shall include the removal and salvage of the Temporary Support Connections at the Abutments, Piers and the Temporary Supports under each Superstructure span. All structural steel from the existing temporary supports shall become the property of IDOT and delivered to the Pontiac Maintenance Yard.
- 8.) The pay item Removal of Existing Structure No. 5 shall include removal of the bituminous wearing surface on top of the existing deck.



PROFILE GRADE
(Along Roadway)

STATION 141+45.17
BUILT 20... BY
STATE OF ILLINOIS
F.A.P. RT. 681 SEC. 116(BR-2)BR
LOADING HL93
STR. NO. 027-0100

NAME PLATE
See Standard 515001

GENERAL DATA
STRUCTURE NO. 027-0100

DESIGNED	SDH
CHECKED	JML
DRAWN	JWK/DJM
CHECKED	MSW

DATE 08/04/10

<p>FARNSWORTH GROUP, INC. 2709 McGraw Drive Bloomington, Illinois 61704 309/663-8435, 309/663-1571 fax</p>	SHEET NO. D2 18 SHEETS	F.A.P. RTE.	SECTION	COUNTY	TOTAL SHEETS	SHEET NO.
		681	*	FORD/IROQUOIS	146	69
		CONTRACT NO. 66880				
		FED. ROAD DIST. NO. ILLINOIS FED. AID PROJECT				

* 116 BR/[116 BR, (BR-2)BR, I & BR-3]

24-8271