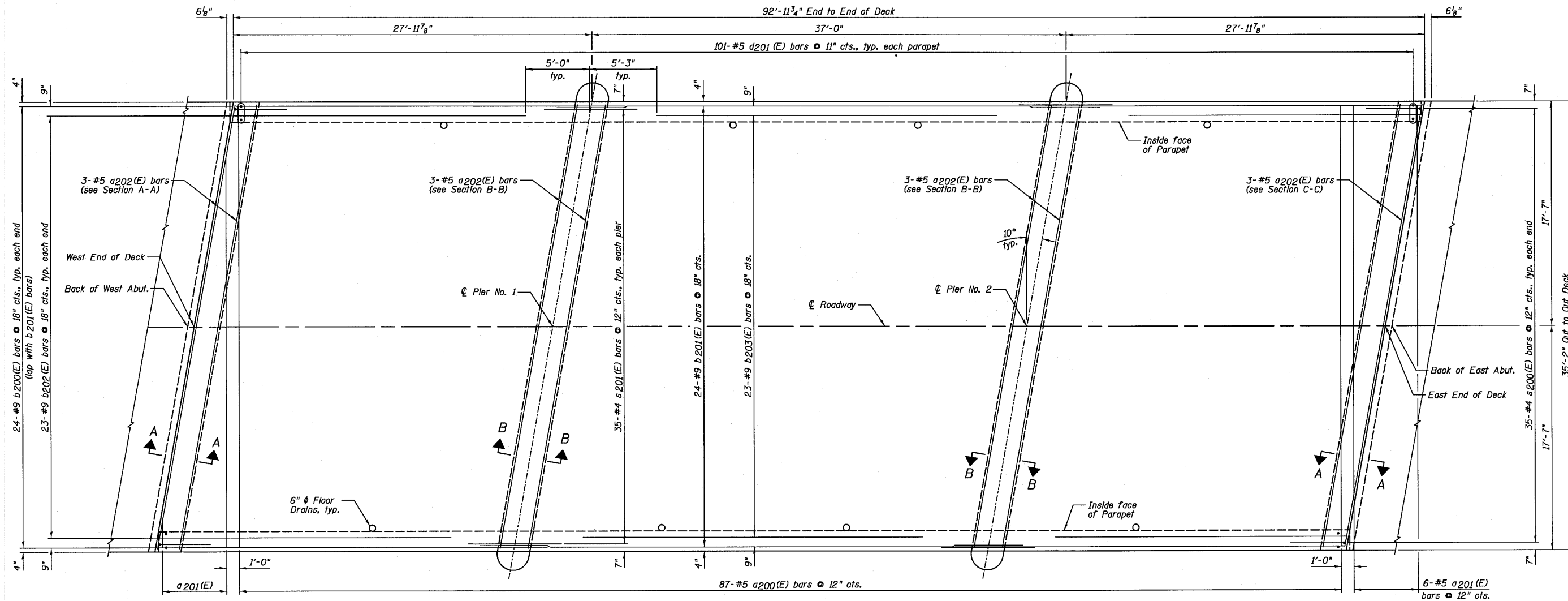


STATE OF ILLINOIS
DEPARTMENT OF TRANSPORTATION



BOTTOM OF SLAB PLAN

BAR LAP
#9 - 5'-3"

NOTES:

- 1.) See Sheet D8 for Superstructure Details and Bill of Material.
- 2.) See Sheet D7 for Sections A-A and B-B.
- 3.) See Sheet D8 for Floor Drain details.
- 4.) Order #201(E) bars full length. Cut according to Bar Cutting Diagram on Sheet D8. Use remainder of bars in opposite end of deck.

DESIGNED	SDH
CHECKED	JML
DRAWN	JWK/DJM
CHECKED	MSW

DATE 08/04/10

SUPERSTRUCTURE DECK
STRUCTURE NO. 027-0100

F.A.P. RTE. 681	SECTION	COUNTY	TOTAL SHEETS	SHEET NO.
	*	FORD/IROQUOIS	146	72
SHEET NO. D5 18 SHEETS		CONTRACT NO. 66880		
FED. ROAD DIST. NO.		ILLINOIS FED. AID PROJECT		

Farnsworth GROUP, INC.
2709 McGraw Drive
Bloomington, Illinois 61704
309/663-8435, 309/663-1571 fax