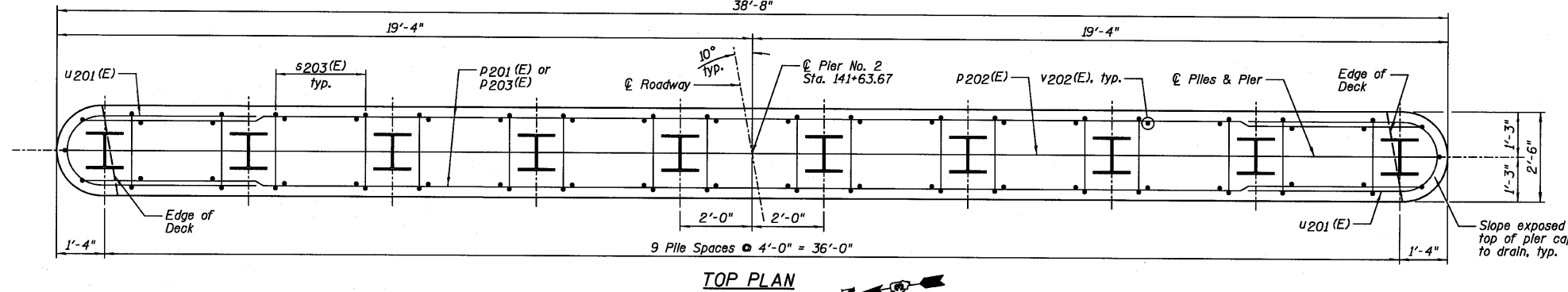
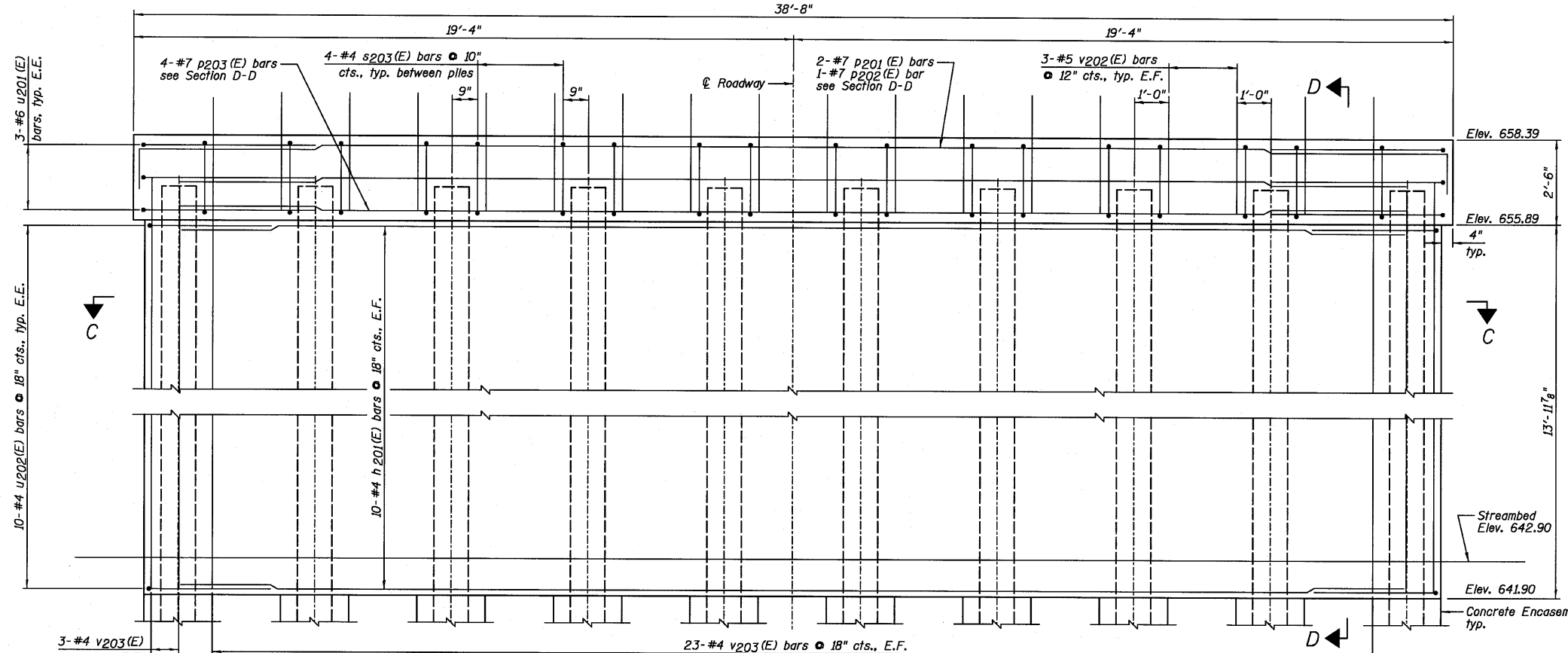


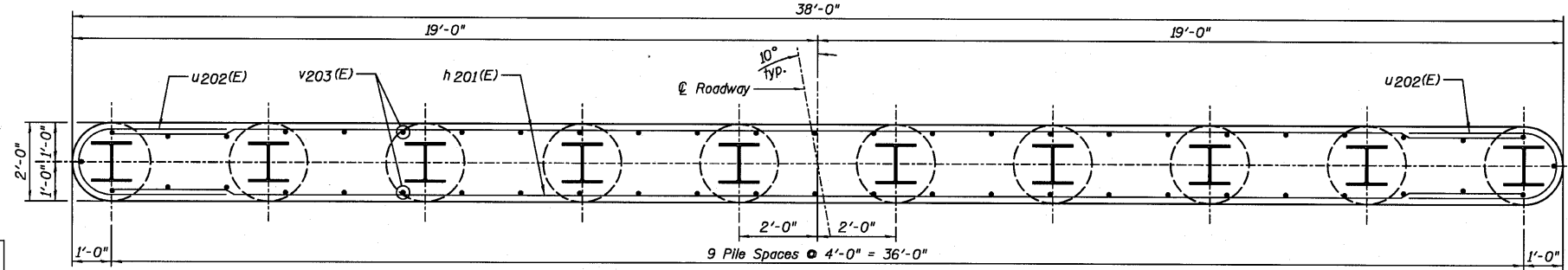
STATE OF ILLINOIS  
DEPARTMENT OF TRANSPORTATION



TOP PLAN



ELEVATION  
(Looking East)



SECTION C-C

PIER NO. 2  
BILL OF MATERIAL

| Bar   | No.     | Size     | Length | Shape |
|---|---------|----------|--------|-------|
| h201(E)   | 20      | #4       | 36'-0" | —     |
| p201(E)   | 2       | #7       | 39'-4" | —     |
| p202(E)   | 1       | #7       | 40'-6" | —     |
| p203(E)   | 4       | #7       | 37'-0" | —     |
| s203(E)   | 36      | #4       | 9'-5"  | □     |
| u201(E)   | 6       | #6       | 12'-3" | —     |
| u202(E)   | 20      | #4       | 8'-5"  | —     |
| v202(E)   | 54      | #5       | 3'-3"  | —     |
| v203(E)   | 52      | #4       | 15'-1" | —     |
| Item  | Unit    | Quantity |        |       |
| Structure Excavation                                    | Cu. Yd. | 44       |        |       |
| Concrete Structures                                     | Cu. Yd. | 47.7     |        |       |
| Concrete Encasement                                     | Cu. Yd. | 3.5      |        |       |
| Reinforcement Bars, Epoxy Coated                        | Pound   | 2,180    |        |       |
| Furnishing Steel Piles HPI2x63                          | Foot    | 550      |        |       |
| Driving Piles   | Foot    | 550      |        |       |
| Underwater Structure Excavation Protection - Location 2 | Each    | 1        |        |       |

PILE DATA:

|                               |                 |
|-------------------------------|-----------------|
| Pile Type and Size            | Steel - HPI2x63 |
| Nominal Required Bearing      | 320 klps        |
| Factored Resistance Available | 160 klps        |
| Estimated Pile Length         | 55 Feet         |
| Number of Production Piles    | 10              |
| Number of Test Piles          | 0               |

NOTES:

- 1.) If a portion of the pier wall or concrete encasement is under water, reinforcement may be placed under water into forms. Concrete shall be tremied according to Article 503.08 of the Standard Specifications to an elevation 1'-0" above the water line at the time of construction.
- 2.) E.F. denotes Each Face and E.E. denotes Each End.
- 3.) See Sheet D15 for Section D-D.

PIER NO. 2  
STRUCTURE NO. 027-0100

|          |          |
|----------|----------|
| DESIGNED | SDH      |
| CHECKED  | JML      |
| DRAWN    | JWK/DJM  |
| CHECKED  | MSW      |
| DATE     | 08/04/10 |

**Farnsworth GROUP, INC.**  
2709 McGraw Drive  
Bloomington, Illinois 61704  
309/663-8435, 309/663-1571 fax

SHEET NO. D14  
18 SHEETS

| F.A.P. RTE.         | SECTION | COUNTY                    | TOTAL SHEETS | SHEET NO. |
|---------------------|---------|---------------------------|--------------|-----------|
| 681                 | *       | FORD/IROQUOIS             | 146          | 81        |
| FED. ROAD DIST. NO. |         | ILLINOIS FED. AID PROJECT |              |           |
| CONTRACT NO. 66880  |         |                           |              |           |