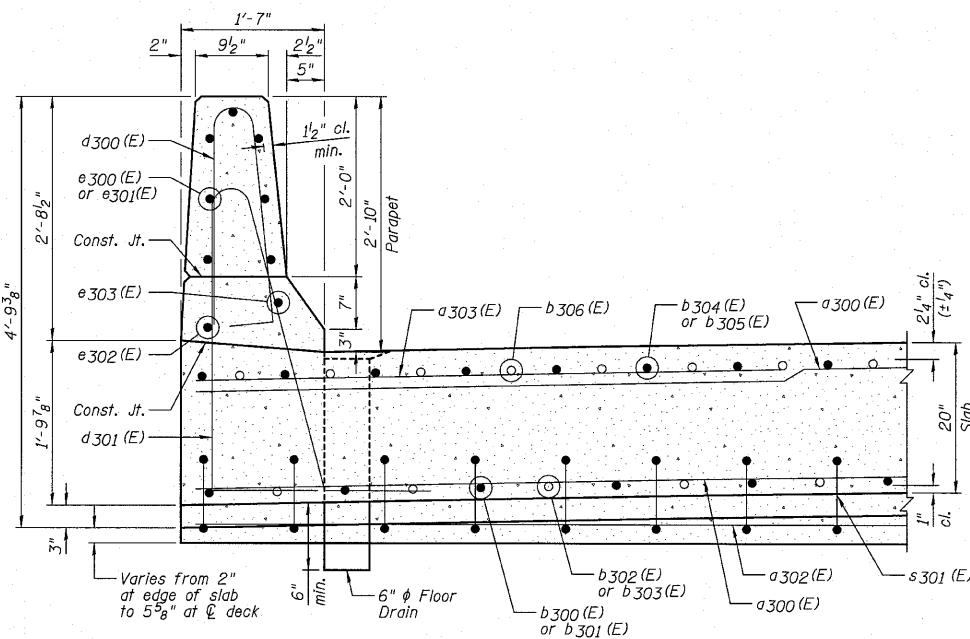
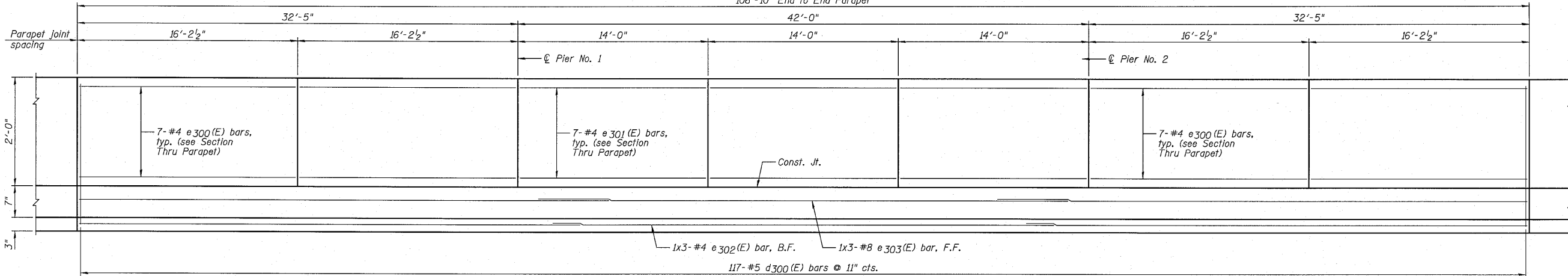


STATE OF ILLINOIS
DEPARTMENT OF TRANSPORTATION

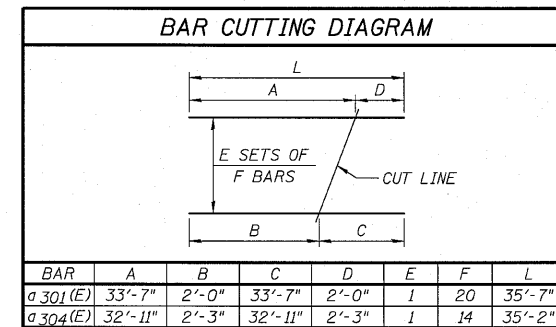
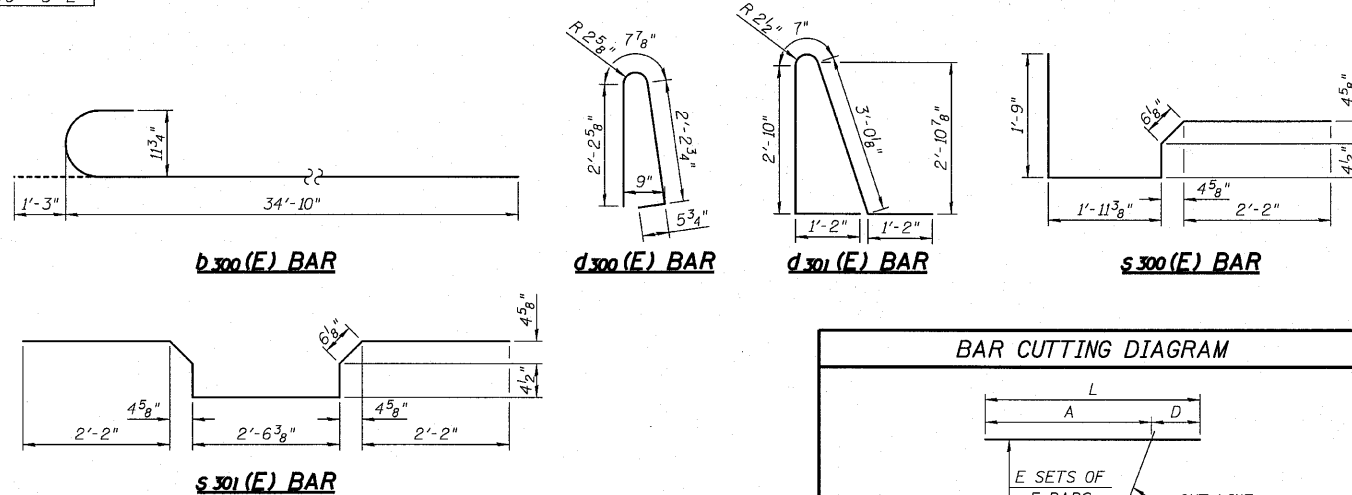
106'-10" End to End Parapet



SECTION THRU PARAPET

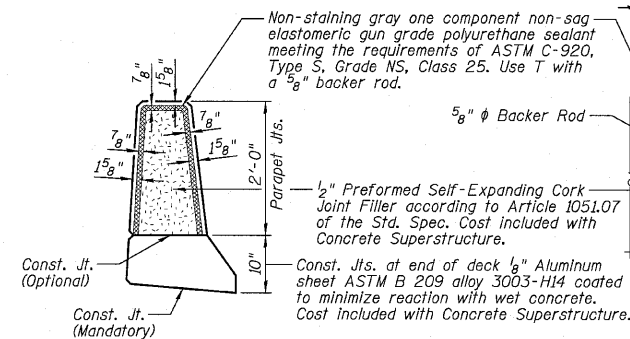
INSIDE ELEVATION OF PARAPET

BAR LAP
#4 - 2'-0"
#8 - 5'-2"

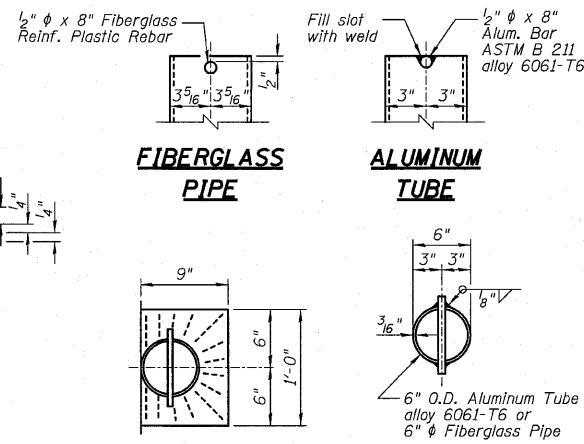


SUPERSTRUCTURE
BILL OF MATERIAL

Bar	No.	Size	Length	Shape
a300(E)	147	#5	34'-10"	—
a301(E)	20	#5	35'-7"	—
a302(E)	12	#5	40'-8"	—
a303(E)	144	#6	6'-6"	—
a304(E)	14	#5	35'-2"	—
b300(E)	54	#9	36'-1"	—
b301(E)	27	#9	47'-3"	—
b302(E)	52	#9	26'-6"	—
b303(E)	26	#9	29'-6"	—
b304(E)	108	#5	13'-6"	—
b305(E)	72	#9	38'-0"	—
b306(E)	70	#9	19'-0"	—
d300(E)	234	#5	5'-7"	—
d301(E)	234	#5	8'-9"	—
e300(E)	56	#4	15'-11"	—
e301(E)	42	#4	13'-8"	—
e302(E)	6	#4	36'-10"	—
e303(E)	6	#8	38'-11"	—
s300(E)	70	#4	6'-9"	—
s301(E)	70	#4	8'-8"	—
Item	Unit	Quantity		
Concrete	Cu. Yd.	264.7		
Reinforcement Bars, Epoxy Coated	Pound	48,080		



PARAPET JOINT DETAILS

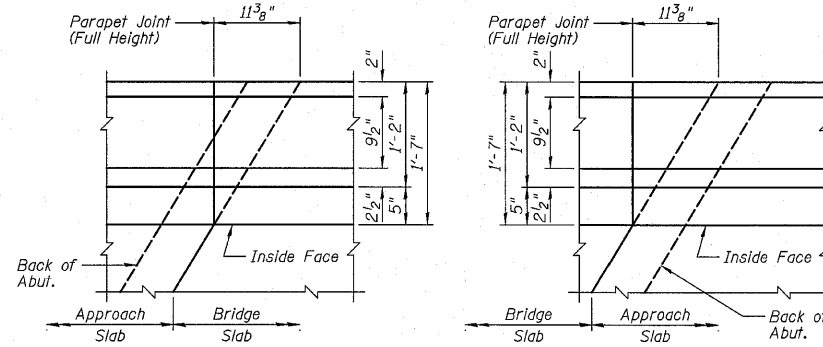


TOP PLAN

TOP PLAN (Showing Aluminum Tube)

DRAIN NOTES:

- 1.) Space Drains to miss slab reinforcement.
- 2.) Fiberglass pipe shall conform to ASTM D2996, with short-term rupture strength hoop tensile stress of 30,000 p.s.i. minimum.
- 3.) The exterior surfaces of the floor drains shall be coated or pigmented by the manufacturer with a color that matches the concrete.



DETAIL A

DETAIL B

NOTES:

- 1.) B.F. denotes Back Face and F.F. denotes Front Face.
- 2.) For location of Detail A and Detail B, see Sheet E6.
- 3.) Inside elevation of parapet is exaggerated vertically to show reinforcement.
- 4.) Bars indicated thus 1x3-#4 etc. indicates 1 line of bars with 3 lengths per line.

DESIGNED	SDH
CHECKED	JML
DRAWN	JWK/DJM
CHECKED	MSW

DATE 08/04/10

Farnsworth GROUP, INC.
2709 McGraw Drive
Bloomington, Illinois 61704
309/663-8435, 309/663-1571 fax

SHEET NO. E8
18 SHEETS

F.A.P. RTE.	SECTION	COUNTY	TOTAL SHEETS	SHEET NO.
681	*	FORD/IROQUOIS	146	93
CONTRACT NO. 66880				
FED. ROAD DIST. NO.	ILLINOIS FED. AID PROJECT			