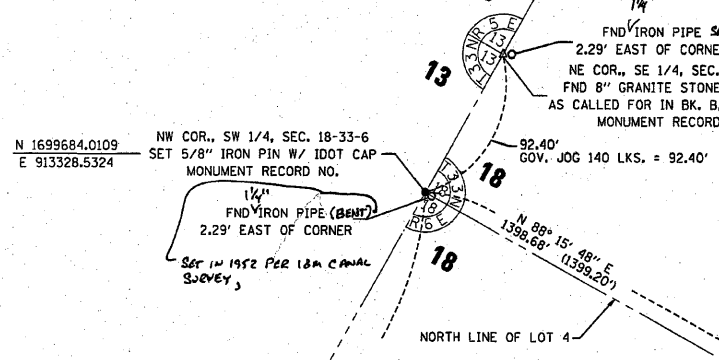


US RTE 6
CURVE DATA
PI STA. = 416+38.73
 $\Delta = 6^\circ 01' 38''$ (RT)
D = 1° 30' 00"
R = 3,819.72'
T = 201.09'
L = 401.81'
E = 5.29'
P.C. STA. = 414+37.64
P.T. STA. = 418+39.45

SEC. 18, T. 33 N., R. 6 E., 3RD P.M.



PARCEL 3WF0001

EARL E. CAZEL, et al

TOTAL HOLDING = 26.870 AC. ±
TOTAL R.O.W. REQUIRED = 0.320 AC. ±
AREA IN EX. R.O.W. = 0.164 AC. ±
NET R.O.W. REQ'D. = 0.156 AC. ±
REMAINDER = 26.550 AC. ±

TEMPORARY EASEMENT = 0.035 AC. ±
PURPOSE: CHANNEL GRADING & SHAPING

LOT 4

A SUBDIVISION OF SECTION 18 AND THE NORTH HALF OF SECTION 19
RECORDED IN PLAT BOOK B ON PAGE 62
AS DOCUMENT NO. 44854

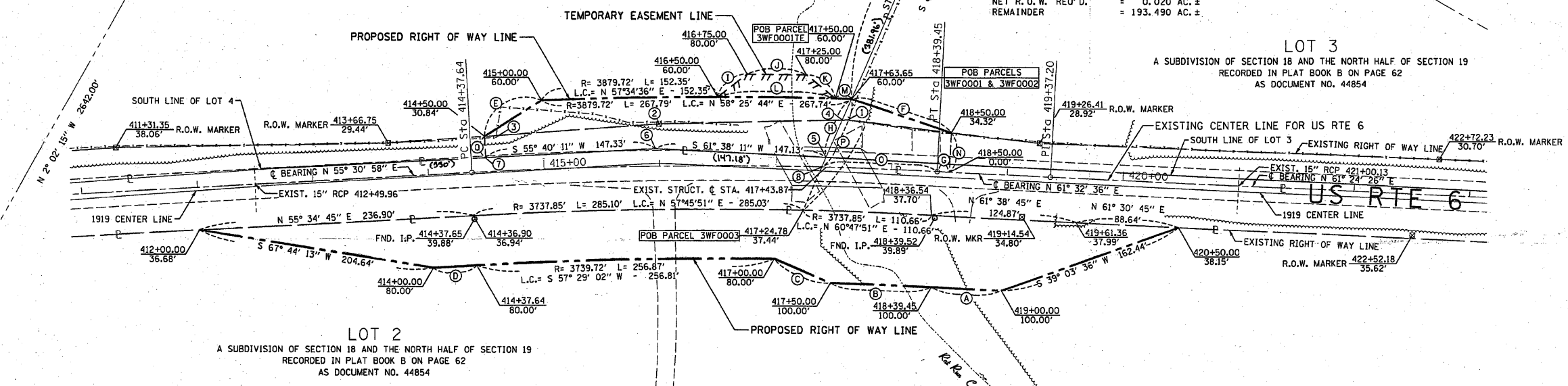
PARCEL 3WF0002

JACK F. SCHROEDER, et ux

TOTAL HOLDING = 193.600 AC. ±
TOTAL R.O.W. REQUIRED = 0.110 AC. ±
AREA IN EX. R.O.W. = 0.090 AC. ±
NET R.O.W. REQ'D. = 0.020 AC. ±
REMAINDER = 193.490 AC. ±

LOT 3

A SUBDIVISION OF SECTION 18 AND THE NORTH HALF OF SECTION 19
RECORDED IN PLAT BOOK B ON PAGE 62
AS DOCUMENT NO. 44854



LOT 2

A SUBDIVISION OF SECTION 18 AND THE NORTH HALF OF SECTION 19
RECORDED IN PLAT BOOK B ON PAGE 62
AS DOCUMENT NO. 44854

PARCEL 3WF0003

SENECA I-80 RAILPORT, LLC, et al

TOTAL HOLDING = 125.680 AC. ±
TOTAL R.O.W. REQUIRED = 0.769 AC. ±
REMAINDER = 124.911 AC. ±

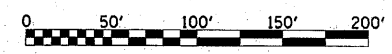
SURVEYOR'S STATEMENT

I, CURT A. BENDER, HEREBY CERTIFY THAT I AM A PROFESSIONAL LAND SURVEYOR OF THE STATE OF ILLINOIS, THAT THE SURVEY OF F.A.P. 623 (US ROUTE 6) WAS MADE BY WILLET HOFMANN & ASSOCIATES, INC. UNDER MY DIRECTION, AT THE REQUEST OF THE ILLINOIS DEPARTMENT OF TRANSPORTATION, DISTRICT 3, AND THAT THE SURVEY IS TRUE AND COMPLETE AS SHOWN TO THE BEST OF MY KNOWLEDGE AND BELIEF, THAT ALL MONUMENTS AND MARKS ARE OF THE CHARACTER AND OCCUPY THE POSITION SHOWN THEREON, AND ARE SUFFICIENT TO ENABLE THE SURVEY TO BE RETRACED. THIS PROFESSIONAL SERVICE CONFORMS TO THE CURRENT ILLINOIS MINIMUM STANDARDS FOR A BOUNDARY SURVEY.

CURT A. BENDER, ILLINOIS PROFESSIONAL LAND SURVEYOR NO. 3688 (EXPIRES NOVEMBER 2010)
WILLET, HOFMANN & ASSOCIATES, INC. - DESIGN FIRM NO. 184-000918

- LEGEND -
- (A) = S 61° 32' 36" W 60.55'
 - (B) = R = 3719.72' L = 87.11' L.C. = S 60° 52' 21" W - 87.11'
 - (C) = S 82° 06' 10" W 52.76'
 - (D) = S 55° 30' 58" W 37.64'
 - (E) = N 26° 06' 49" E 58.39'
 - (F) = N 77° 26' 01" E 91.02'
 - (G) = S 61° 32' 36" W 10.55'
 - (H) = S 8° 04' 49" E 55.56'
 - (I) = N 20° 44' 09" E 32.37'
 - (J) = N 59° 27' 06" E 51.05'
 - (K) = S 81° 49' 58" E 32.37'
 - (L) = R = 3879.72' L = 101.57' L.C. = S 59° 27' 06" W - 101.57'
 - (M) = R = 3879.72' L = 13.87' L.C. = S 60° 18' 14" W - 13.87'
 - (N) = S 28° 27' 24" E 34.32'
 - (O) = R = 3819.72' L = 99.48' L.C. = S 60° 47' 50" W - 99.48'
 - (P) = N 8° 04' 49" W 64.57'
 - (Q) = N 34° 17' 54" W 18.62'
- (1) = STA. 417+60.89 OFFSET 41.49'
 - (2) = STA. 415+99.86 OFFSET 36.78' R.O.W. MARKER
 - (3) = STA. 414+59.55 OFFSET 29.42'
 - (4) = STA. 417+56.34 OFFSET 41.26'
 - (5) = STA. 417+43.32 OFFSET 8.36' SE CORNER LOT 4
 - (6) = STA. 415+96.79 OFFSET 15.13'
 - (7) = STA. 414+50.00 OFFSET 12.21'
 - (8) = STA. 417+39.97 OFFSET 0.00'

PRE-FINAL



NOTE: FOR THE PURPOSE OF THIS PLAT, BEARINGS ARE BASED UPON THE ILLINOIS STATE PLANE COORDINATE SYSTEM, EAST ZONE, (NAD-83, 2007 ADJ.).

WILLET, HOFMANN & ASSOCIATES, INC.
CONSULTING ENGINEERS
Land Surveying - Transportation - Structural
Environmental - Architecture
800 East Second Street Dixon, Illinois 61021
Phone 815.284.3381 Fax 815.284.3385
Design Firm #154-000918
www.willett-hofmann.com

IDOT SURVEY BOOK #161, 161A, FAP 623-13-1

FILE NAME	USER NAME = #USER#	DESIGNED -	REVISED -
#FILE#		DRAWN -	REVISED -
PLOT SCALE = #SCALE#		CHECKED - C B	REVISED -
PLOT DATE = #DATE#		DATE	REVISED -

STATE OF ILLINOIS
DEPARTMENT OF TRANSPORTATION

RIGHT OF WAY PLANS	
PROJECT	JOB NO. R-93-012-10
SHEET NO. 1 OF 1 SHEETS	STA. 412+00.00 TO STA. 420+50.00

F.A.P. RTE.	SECTION	COUNTY	TOTAL SHEETS	SHEET NO.
623	(0) BR	GRUNDY	35	13
US ROUTE 6		CONTRACT NO.		
FED. ROAD DIST. NO.		ILLINOIS FED. AID PROJECT		