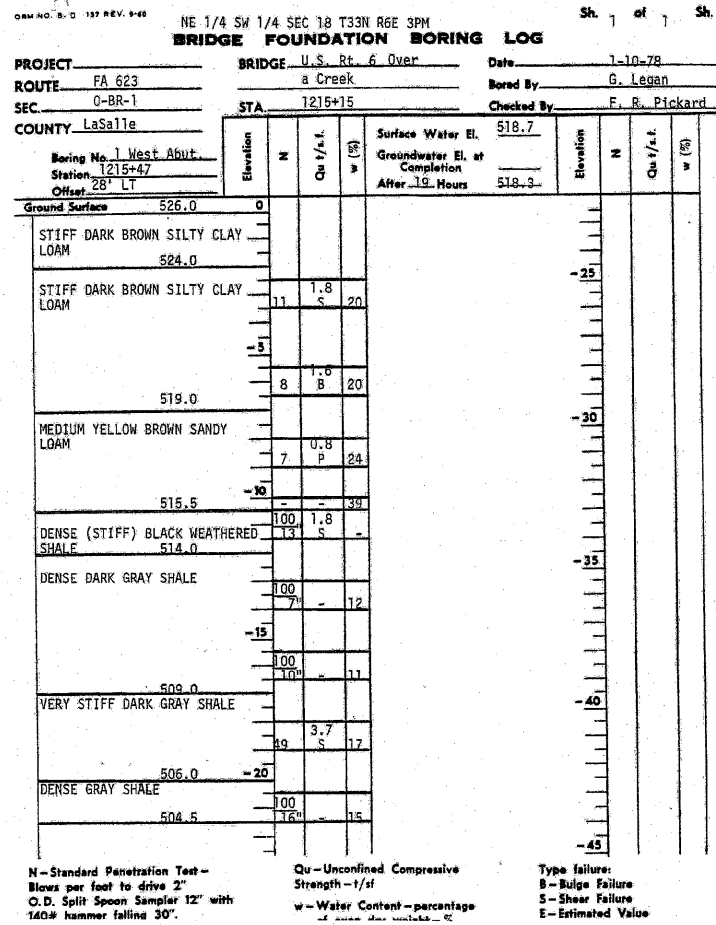
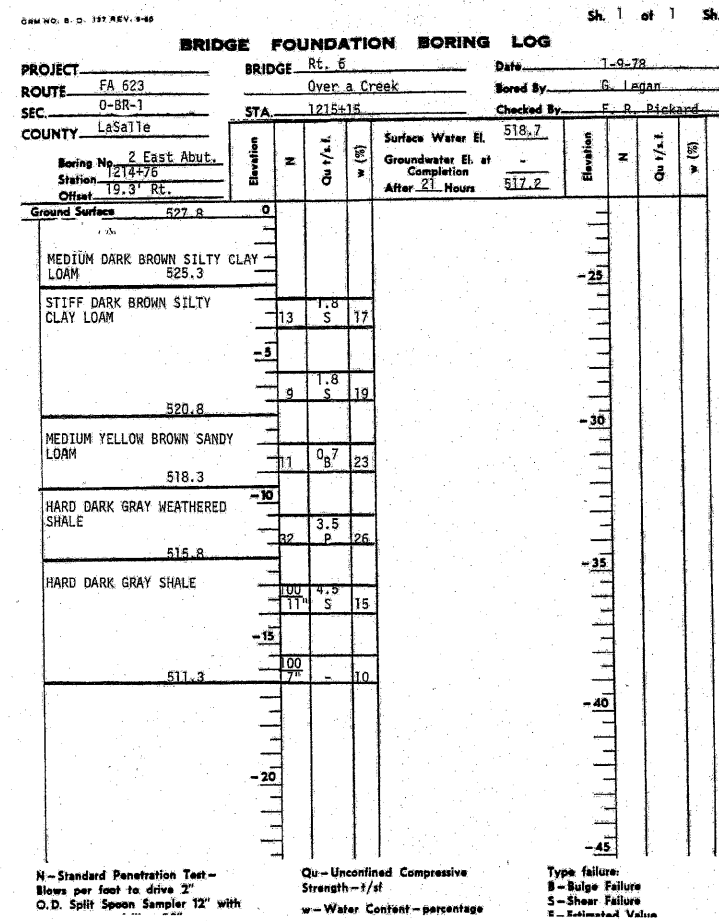


STATE OF ILLINOIS
DEPARTMENT OF TRANSPORTATION




Current location: Sta. 416+90.18, 28' Rt.



Current location: Sta. 417+61.18, 19.3' Lt.

BORING LOGS
ORIGINAL (1978)
STRUCTURE NO. 032-2020

 QATES ASSOCIATES Consulting Engineers Design Firm License No. 184.001115	Eastport Business Center 1 100 Lanter Court, Suite 1 Collinsville, Illinois 62234 618-345-2200		DESIGNED <u>JAD</u>		
			CHECKED <u>NEL</u>		
			DRAWN <u>JAD</u>		
			CHECKED <u>NEL</u>		
SHEET NO. 4 4 SHEETS	F.A.P. RTE. 623	SECTION (0) BR	COUNTY GRUNDY	TOTAL SHEETS 35	SHEET NO. 17
			CONTRACT NO. 66913		
ILLINOIS FED. AID PROJECT					