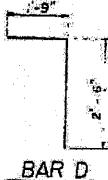
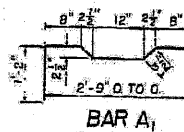


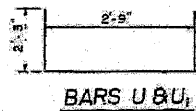
ELEVATION



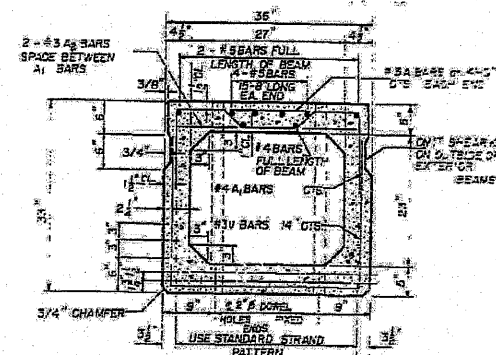
BAR D



BAR A1



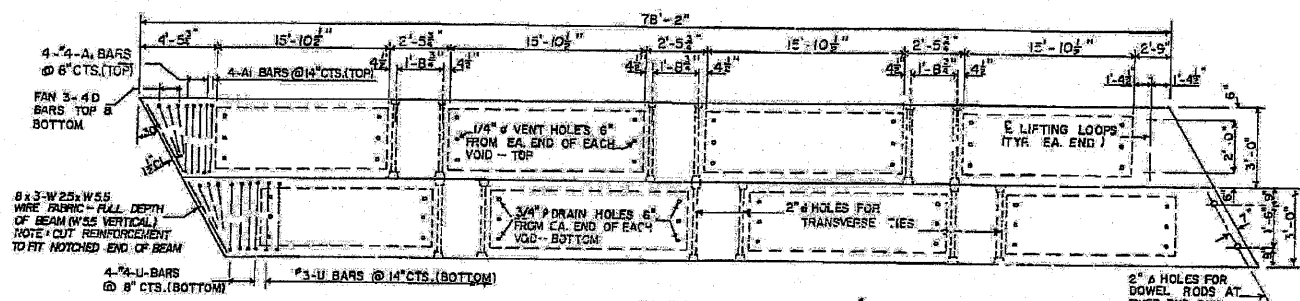
BARS U & U1



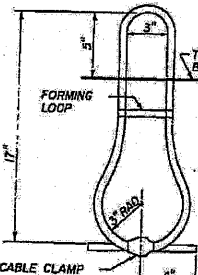
TYPICAL SECTION THRU 33" X 36" BEAM
17-7 WIRE - 1/2" Ø STRANDS, EACH STRAND STRESSED TO 22,500 LBS.
3 STRANDS | 3/4" UP, 5 STRANDS 3/4" UP AND 2 STRANDS 5/8" UP



BITUMINOUS SURFACE PROFILE

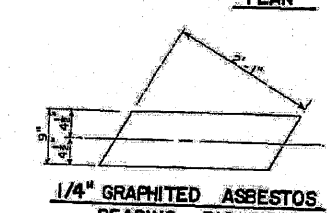


PLAN

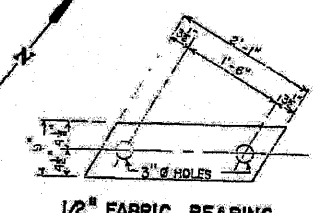


DETAIL OF LIFTING LOOPS

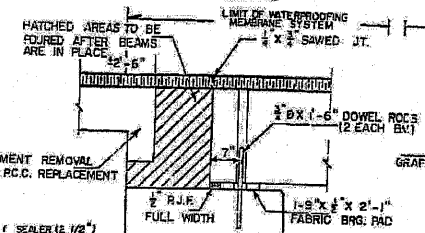
LIFTING LOOPS SHALL BE 6X25 CLASS WIRE 3/4" Ø ROPE WITH FIBER CORE. MIN. ULTIMATE TENSILE STRENGTH SHALL BE 46,000 LBS.



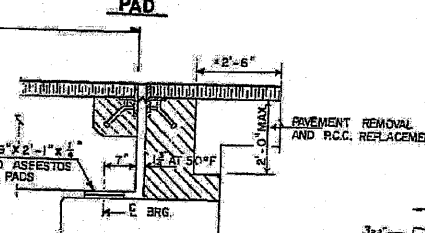
1/4" GRAPHITED ASBESTOS BEARING PAD



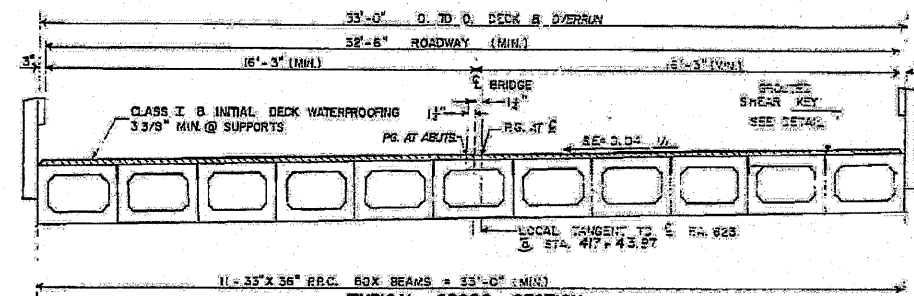
1/2" FABRIC BEARING PAD



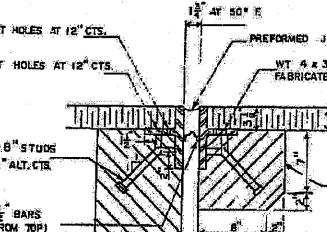
SEC. THRU EAST ABUT. (FIXED)



SEC. THRU WEST ABUT. (EXPANSION)

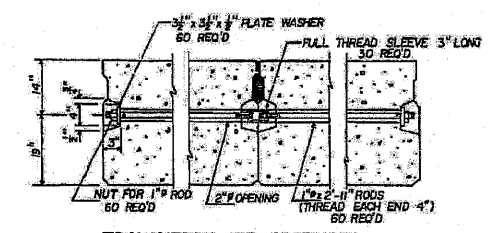


TYPICAL CROSS SECTION

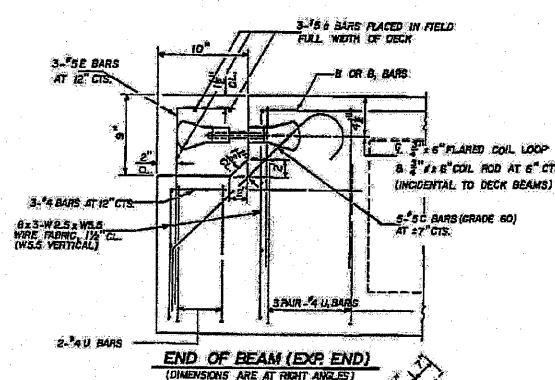


PREFORMED JT. SEALER

HATCHED AREAS TO BE POURED AFTER BEAMS HAVE BEEN ERRECTED AND JOINTS GROUTED



TRANSVERSE TIE ASSEMBLY



END OF BEAM (EXP. END)



BAR C

BAR E

PREFORMED JOINT SEALER (12")

GENERAL NOTES

PRESTRESSING STEEL SHALL BE NON-GALVANIZED HIGH STRENGTH STRESS-RELIEVED 7-WIRE STRAND, GRADE 270. THE NOMINAL DIAMETER SHALL BE 1/2" AND THE NOMINAL CROSS-SECTIONAL AREA SHALL BE 0.153 SQUARE INCH.
THE 1" Ø RODS IN THE TRANSVERSE TIE ASSEMBLY SHALL BE TIGHTENED TO A SNUG FIT AND THE THREADS SET.
POCKETS THAT RECEIVE TRANSVERSE TIE BAR ON OUTSIDE BEAM SHALL BE FILLED WITH GROUT AFTER TRANSVERSE TIE ASSEMBLY IS IN PLACE.
LONGITUDINAL SHEAR KEYS SHALL BE DRY BACKED WITH 2:1 SAND AND P.C. MORTAR.
AFTER BEAMS HAVE BEEN ERRECTED, HOLES FOR DOWEL ANCHORS SHALL BE DRILLED INTO THE SUBSTRUCTURE AND THE ANCHOR DOWELS SHALL BE GROUTED IN PLACE.
COST OF REINFORCEMENT AND ACCESSORIES CASTED INTO BEAM, OF BEARING PADS, OF FURNISHING AND ASSEMBLING TRANSVERSE TIES, OF FURNISHING, DRILLING AND GROUTING DOWEL HOLES, AND OF GROUTING LONGITUDINAL SHEAR KEYS IS INCLUDED IN UNIT PRICE BID FOR "PRECAST PRESTRESSED CONCRETE BRIDGE DECK".
REINFORCING BARS SHALL CONFORM TO A.A.A.S.T.Y.O. A-31 OR A-33, GRADE 60.

BILL OF MATERIALS

BAR	NO	SIZE	LENGTH	SHAPE
REINFORCEMENT BARS				120 LBS
PRECAST PRESTRESSED CONCRETE DECK BEAMS	(33')			2580 SQ. FT.
CLASS X CONCRETE				0.90 CU. YD.
FURN. & ERRECTING STR. STEEL				2640 LBS.
BIT. CONC. SURF. CSE. CLASS D				37 TONS
WATERPROOFING MEMBRANE SYSTEM				301 SQ. YD.
PREFORMED JOINT SEALER (12")				38 LIN. FT.
PORTLAND CEMENT MORTAR FINISH COURSE				782 LIN. FT.

SUPERSTRUCTURE
F.A. RTE. 623 (U.S. RT. 6)
SECTION 0-BR-1
GRUNDY COUNTY
STATION 417+43.87