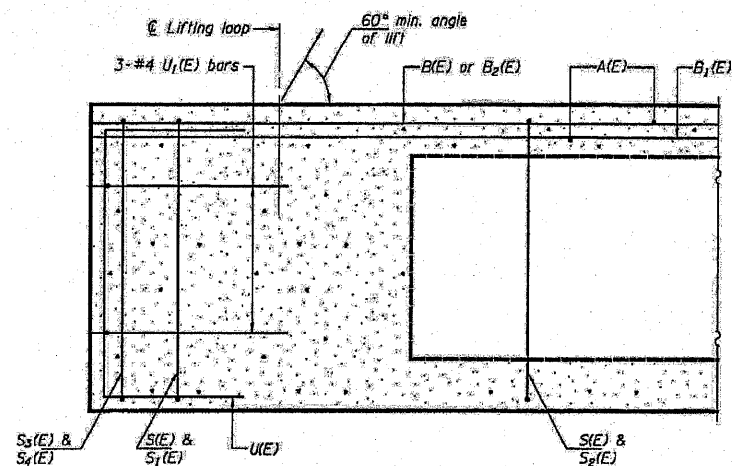
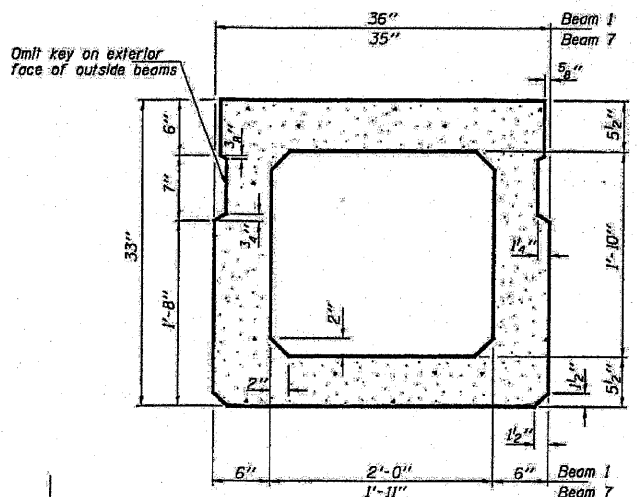


STATE OF ILLINOIS  
DEPARTMENT OF TRANSPORTATION

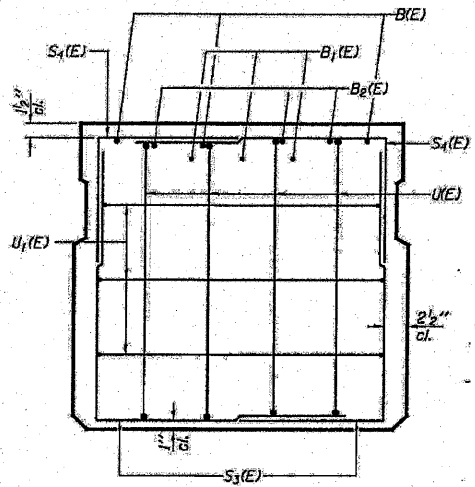
PROJECT NO.	SECTION	COUNTY	SHEET	TOTAL	SHEET NO. 20
FAP 623		GRUNDY	12	110	3 SHEETS
FEDERAL DISTRICT: ILLINOIS					
CONTRACT NUMBER: 66808					
* 10-BR-11					



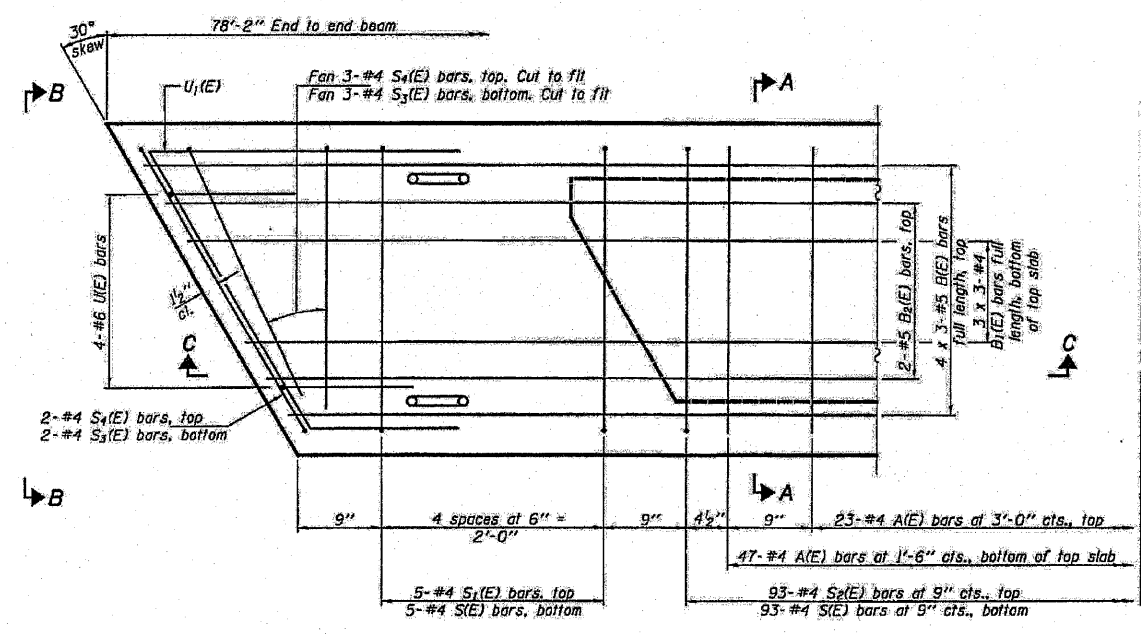
SECTION C-C



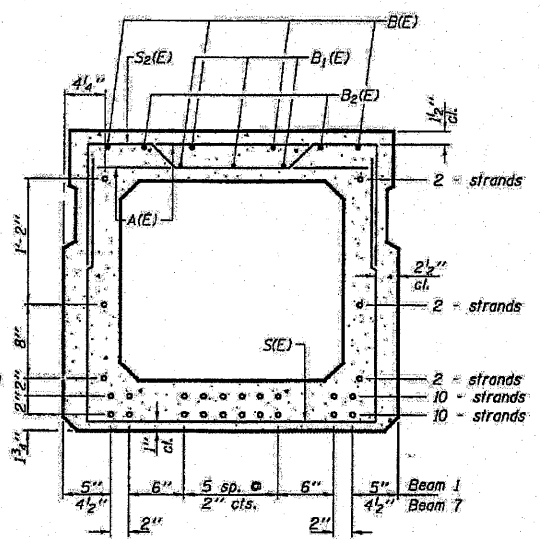
SECTION A-A  
(Showing dimensions)



VIEW B-B



PLAN VIEW



SECTION A-A  
(Showing reinforcement and permissible strand locations)

Note: Place the number of strands specified in each row symmetrically about the centerline of beam in the permissible strand locations shown.

BAR LIST 36" BEAM  
(For information only)

Bar	No.	Size	Length	Shape
A(E)	70	#4	2'-7"	—
B(E)	12	#5	27'-6"	—
B1(E)	9	#4	27'-3"	—
B2(E)	4	#5	15'-9"	—
S(E)	103	#4	7'-5"	—
S1(E)	10	#4	6'-3"	—
S2(E)	93	#4	6'-6"	—
S3(E)	10	#4	4'-11"	—
S4(E)	10	#4	4'-4"	—
U(E)	8	#6	5'-0"	—
U1(E)	6	#4	6'-10"	—

BAR LIST 35" BEAM  
(For information only)

Bar	No.	Size	Length	Shape
A(E)	70	#4	2'-7"	—
B(E)	12	#5	27'-6"	—
B1(E)	9	#4	27'-3"	—
B2(E)	4	#5	15'-9"	—
S(E)	103	#4	7'-4"	—
S1(E)	10	#4	6'-2"	—
S2(E)	93	#4	6'-5"	—
S3(E)	10	#4	4'-11"	—
S4(E)	10	#4	4'-4"	—
U(E)	8	#6	5'-0"	—
U1(E)	6	#4	6'-8"	—

Note: See sheet 2 of 4 for additional details and Bill of Material.

MINIMUM BAR LAPS

#4 bar = 1'-8"  
#5 bar = 2'-2"

Bars indicated thus 4 x 3-#5 etc. indicates 4 lines of bars with 3 lengths per line.

REPAIR DETAILS  
FAP 623  
GRUNDY COUNTY  
SN 032-0084

DESIGNED	AJB	EXAMINED	MAY 2, 2008
CHECKED	VHV	PASSED	<i>Robert E. Anderson</i>
DRAWN	boliva	ENGINEER OF BRIDGES AND STRUCTURES	
CHECKED	AJB VHV		
PD-3336-R		8-29-07	

Note: Spacing of S(E) and S2(E) bars may be adjusted up to 4" in the immediate area of the transverse tie diaphragms to miss the block outs for the transverse ties.

...deck\_beams\_fy08\0320084.dgn 5/2/2008 3:41:40 PM

FILE NAME =	USER NAME = nukebusch	DESIGNED -	REVISED -	STATE OF ILLINOIS DEPARTMENT OF TRANSPORTATION	EXISTING BRIDGE REPAIR PLANS FOR INFORMATION ONLY	F.A.P. RTE.	SECTION	COUNTY	TOTAL SHEETS	SHEET NO.
M:\26054\W07 US 6 5-Lane - SN 032-0084\Microstation\shasta03.dgn		DRAWN -	REVISED -			623	(O) BR	GRUNDY	35	24
	PLOT SCALE = 20,0000 / IN.	CHECKED -	REVISED -							CONTRACT NO. 66913
	PLOT DATE = 6/22/2010	DATE -	REVISED -							ILLINOIS FED. AID PROJECT
				SCALE:	SHEET NO. OF SHEETS STA.					