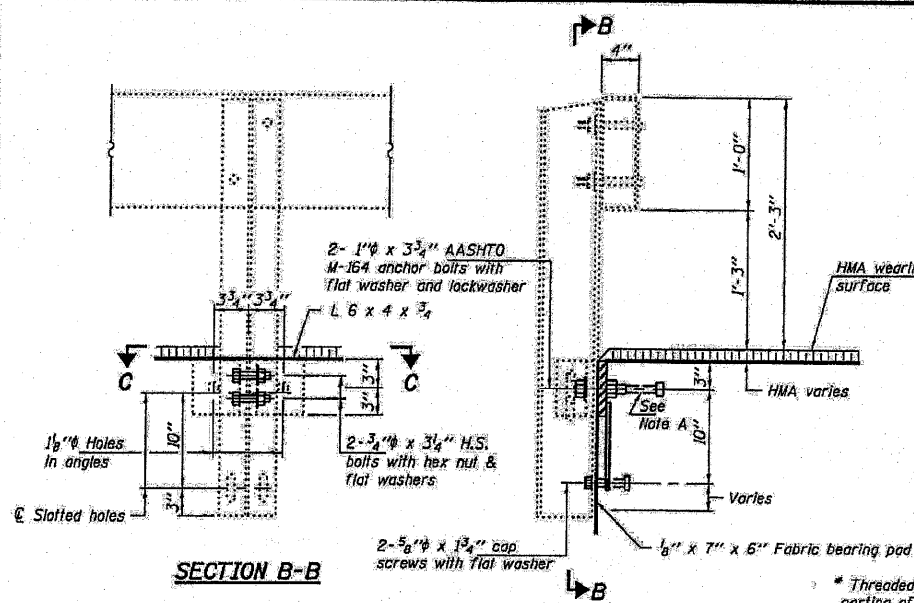


STATE OF ILLINOIS
DEPARTMENT OF TRANSPORTATION

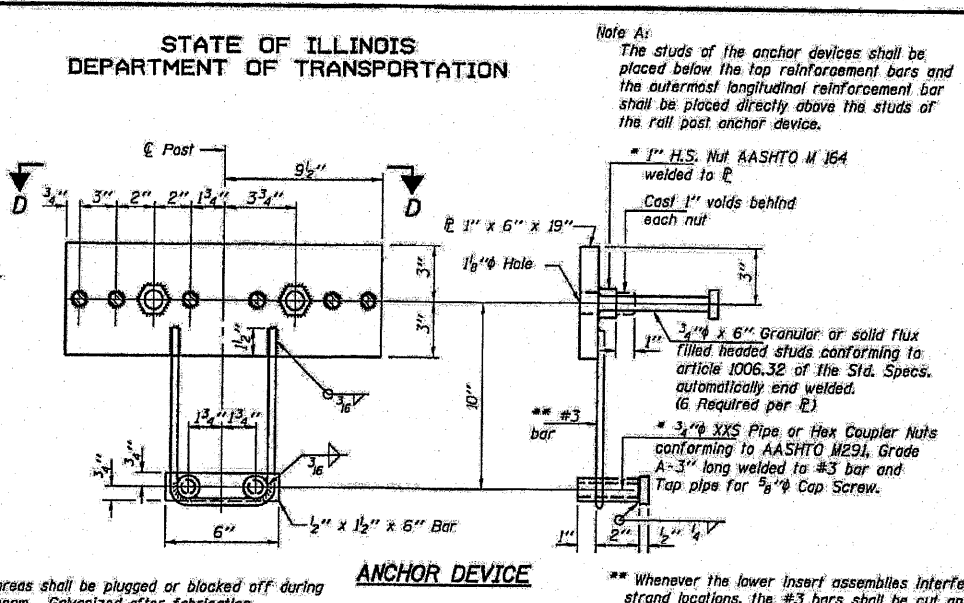
SHEET NO.	SECTION	COUNTY	TOTAL SHEETS	SHEET NO.
FAP 623	(O) BR	GRUNDY	12	12
SHEET NO. 3 3 SHEETS				

Contract Number: 66808
0-08-01

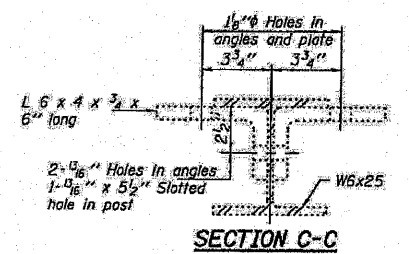
Notes:
 All field drilled holes shall be coated with an approved zinc rich paint before erection.
 All steel rail elements shall be galvanized according to Article 509.05 of the Standard Specifications.
 The removal and re-erection of the existing railing shall be according to Section 509 and 533 of the Standard Specifications.
 The cost of removing and re-erection of the existing railing and post with all applicable new hardware shall be included in the cost of Removing and Re-erection Existing Railing. The work shall be paid for at the contract unit price per foot for Removing and Re-erection Existing Railing.



SECTION B-B

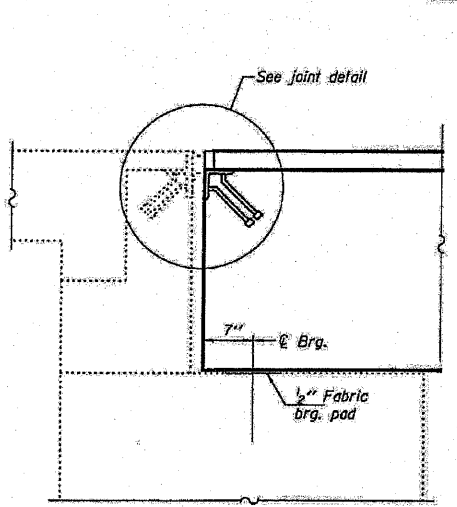


ANCHOR DEVICE

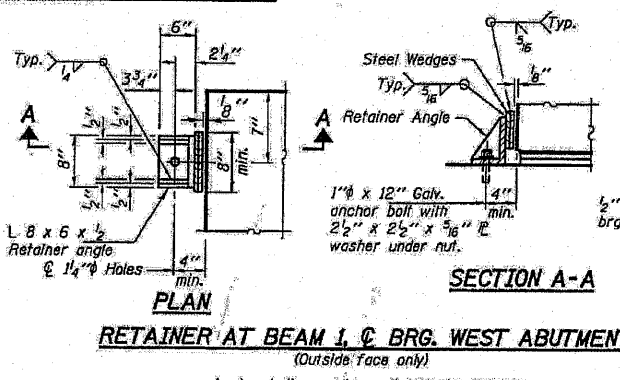


SECTION C-C

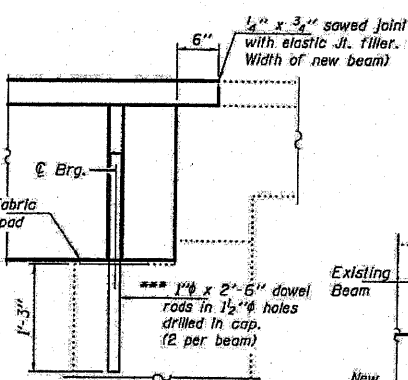
SECTION AT RAILING POST



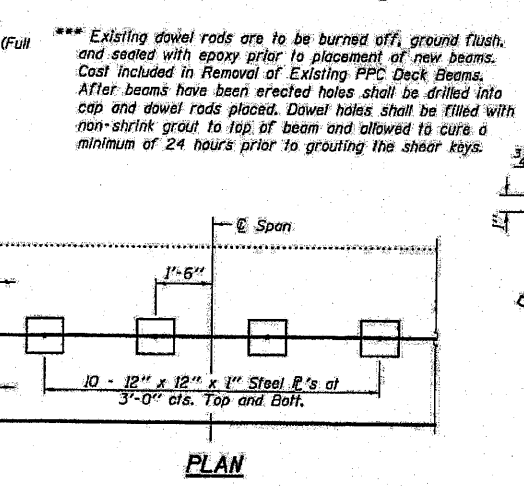
TYPICAL WEST ABUTMENT SECTION



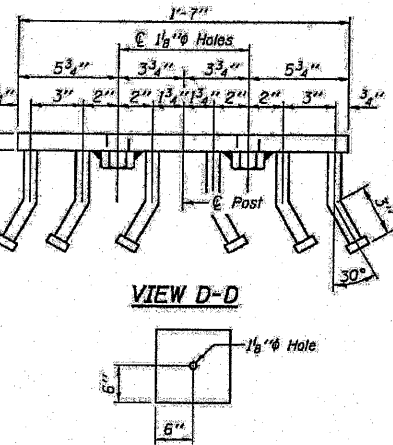
RETAINER AT BEAM 1, E BRG. WEST ABUTMENT (Outside Face only)



TYPICAL EAST ABUTMENT SECTION



SHEAR KEY CLAMPING DEVICE



VIEW D-D

CLAMPING PLATE

Notes:
 See Special Provisions for Stage Construction Precast Prestressed Concrete Deck Beams. See sheet 1 of 4 for Stage traffic lanes. Cost is included with Precast Prestressed Concrete Deck Beams.

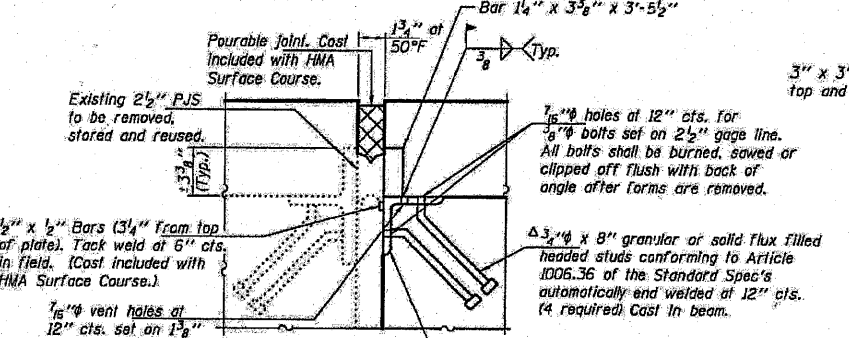
REPAIR DETAILS
FAP 623
GRUNDY COUNTY
SN 032-0084

Anchor bolts may be cast into the masonry or approved threaded rod may be placed in drilled holes and grouted in place. Cost of retainer and accessories are included with Precast Prestressed Concrete Deck Beams.

Existing dowel rods are to be burned off, ground flush, and sealed with epoxy prior to placement of new beams. Cost included in Removal of Existing PPC Deck Beams. After beams have been erected holes shall be drilled into cap and dowel rods placed. Dowel holes shall be filled with non-shrink grout to top of beam and allowed to cure a minimum of 24 hours prior to grouting the shear keys.

* Threaded areas shall be plugged or blocked off during casting of beam. Galvanized after fabrication.

** Whenever the lower insert assemblies interfere with strand locations, the #3 bars shall be cut and adjusted in order to allow raising or lowering of the lower inserts. Maximum adjustment not to exceed 1/2 inch.



WEST ABUTMENT JOINT DETAIL
(Cost included with PPC Deck Beams)

DESIGNED	AJB
CHECKED	VHV
DRAWN	ballva
CHECKED	AJB VHV

EXAMINED
 PASSED
 MAY 2, 2008
 Carl Hoyer
 Robert E. Anderson

ELEVATION NEW JOINT R TO EXISTING JOINT R

...deck_beams_fy08\0320084.dgn 5/2/2008 3:47:33 PM

FILE NAME =	USER NAME = mkebuach	DESIGNED -	REVISED -	STATE OF ILLINOIS DEPARTMENT OF TRANSPORTATION	EXISTING BRIDGE REPAIR PLANS FOR INFORMATION ONLY			F.A.P. RTE.	SECTION	COUNTY	TOTAL SHEETS	SHEET NO.	
Ma26054\W0 7 US 6 5-Lane - SN 032-0084	Microstation\sheet03.dgn	DRAWN -	REVISED -		SCALE:	SHEET NO.	OF SHEETS	STA.	623	(O) BR	GRUNDY	35	25
PLOT SCALE = 28.0000 / IN.		CHECKED -	REVISED -					TO STA.					
PLOT DATE = 6/22/2010		DATE -	REVISED -						FED. ROAD DIST. NO.	ILLINOIS	FED. AID PROJECT		