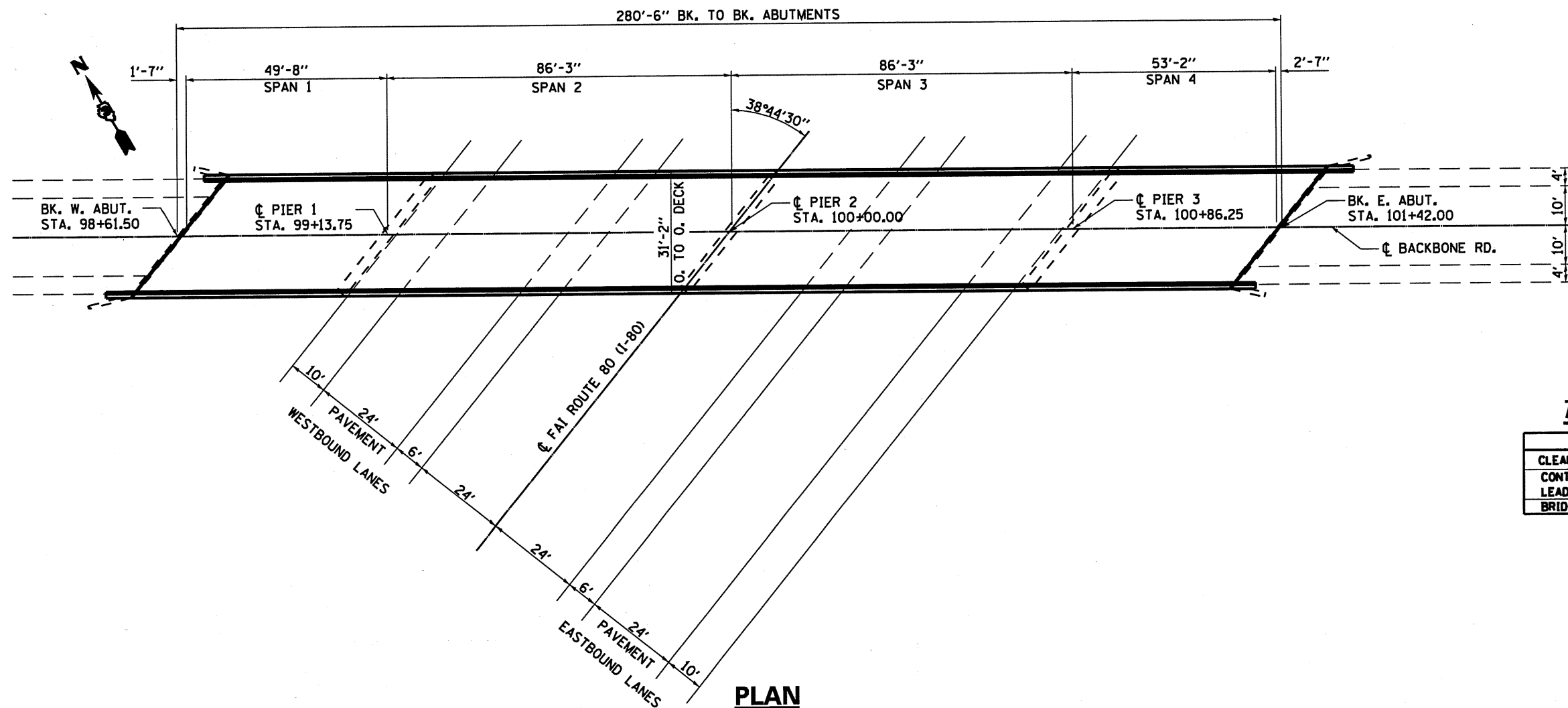


ELEVATION

GENERAL NOTES

EXISTING PAINT COATINGS CONTAIN LEAD. EXISTING STRUCTURAL STEEL HAS ONE SHOP APPLIED COAT OF "RED LEAD" PAINT AND TWO FIELD APPLIED COATS OF ALUMINUM PAINT.



PLAN

TOTAL BILL OF MATERIAL

ITEM	UNIT	TOTAL
CLEANING AND PAINTING STEEL BRIDGE	L SUM	1
CONTAINMENT AND DISPOSAL OF LEAD BASED CLEANING RESIDUES	L SUM	1
BRIDGE CLEANING AND PAINTING WARRANTY	L SUM	1

**PLAN AND ELEVATION
FAS ROUTE 244
(BACKBONE ROAD)
SECTION (06-4HB-1)BP
BUREAU COUNTY
STA. 2289 + 07.63 (FAI 80)
S.N. 006-0116**

FILE NAME =	USER NAME = woodshankr1	DESIGNED - RON WOODSHANK	REVISED -
ca:\pw_work\pwidot\woodshankr1\d0187886\366A41-detail.dgn		DRAWN - RON WOODSHANK	REVISED -
PLOT SCALE = 100.0000 ' / IN.		CHECKED -	REVISED -
PLOT DATE = Aug 23, 2018 - 08:24:17 AM		DATE -	REVISED -

**STATE OF ILLINOIS
DEPARTMENT OF TRANSPORTATION**

**EXISTING STRUCTURE PLANS
006-0007 (EB) & SN 006-0008 (WB)**

SCALE: SHEET NO. 1 OF 2 SHEETS STA. TO STA.

F.A.S. RTE.	SECTION	COUNTY	TOTAL SHEETS	SHEET NO.
244	06-4HB-1)BP	BUREAU	10	9
ILLINOIS			CONTRACT NO. 66A41	