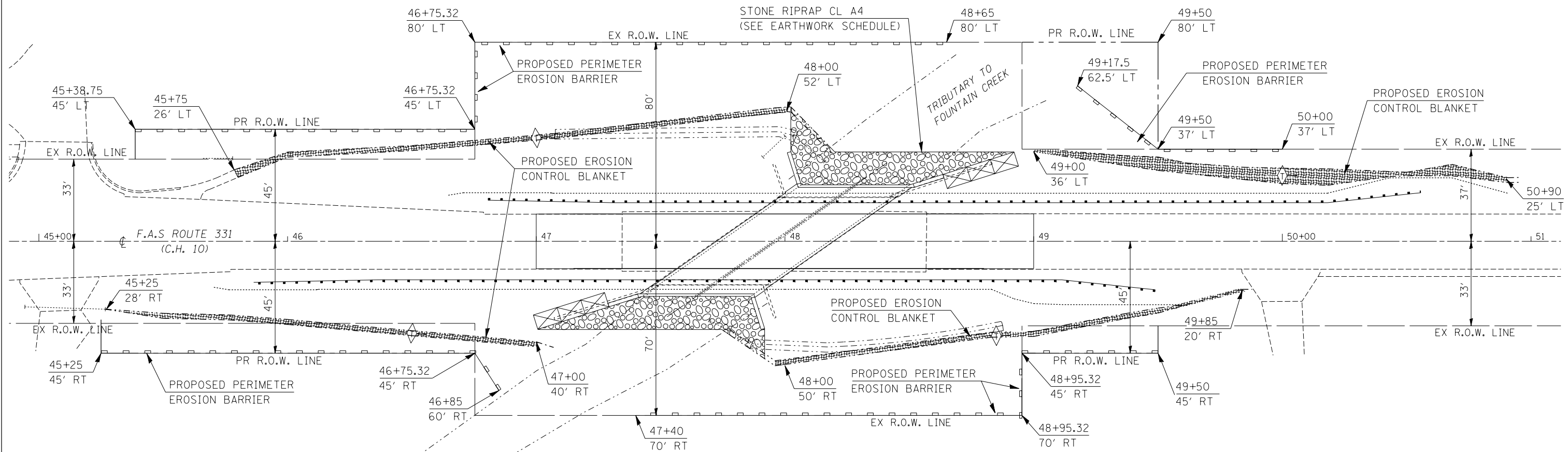


SCHEDULE OF QUANTITIES EROSION CONTROL DETAILS



SEEDING SUMMARY

LOCATION	25000200 SEEDING CLASS 2 (ACRE)	25000400 NITROGEN (POUND)	25000500 PHOSPHORUS (POUND)	25000600 POTASSIUM (POUND)	25100115 MULCH METHOD 2 (ACRE)	28000250 TEMP. EROS. CTL SEEDING (POUND)	25000750 MOWING (ACRE)
LT STA 45+25 - 48+65 (SW QUAD)	0.25	22.5	22.5	22.5	0.50	25.0	0.25
LT STA 48+50 - 51+00 (NW QUAD)	0.30	27.0	27.0	27.0	0.60	30.0	0.30
RT STA 45+25 - 47+50 (SE QUAD)	0.30	22.5	22.5	22.5	0.60	30.0	0.30
RT STA 47+25 - 50+00 (NE QUAD)	0.25	27.0	27.0	27.0	0.50	25.0	0.25
TOTALS =	1.1	99.0	99.0	99.0	2.2	110.0	1.1
USE =	1.1	100.0	100.0	100.0	2.2	110.0	1.1

25100630 EROSION CONTROL BLANKET

LOCATION	LENGTH (FOOT)	WIDTH (FOOT)	AREA (SQ YD)
LT STA 45+75 - 48+00 (SW DITCH)	230.0	6.0	153.3
LT STA 49+00 - 50+90 (NW DITCH)	200.0	6.0	133.3
RT STA 45+25 - 47+00 (SE DITCH)	175.0	6.0	116.7
RT STA 48+00 - 49+85 (NE DITCH)	200.0	6.0	133.3
TOTAL =			536.6
USE =			540.0

**20200100 EARTH EXCAVATION
(FOR STILLING BASIN)**

STATION	OFFSET	(CU YD)
48+75	60' LT	40.0
TOTAL =		40.0
USE =		40.0

28000300 TEMPORARY DITCH CHECKS

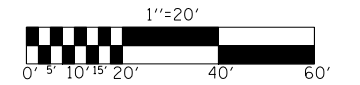
STATION	OFFSET	FOOT
47+00	41.5' LT	12.0
50+00	26.5' LT	12.0
46+50	37.0' RT	12.0
48+85	37.5' RT	12.0
TOTAL =		48.0
USE =		48.0

28000400 PERIMETER EROSION BARRIER

LOCATION	LENGTH (FOOT)
LT STA 45+39 - 48+65 (SW QUAD)	365.0
LT STA 49+17 - 50+00 (NW QUAD)	95.0
RT STA 45+25 - 46+85 (SE QUAD)	170.0
RT STA 47+40 - 49+50 (NE QUAD)	235.0
TOTAL =	865.0
USE =	865.0

28000500 INLET & PIPE PROTECTION

STATION	OFFSET	EACH
45+26.75	27.5' RT	1.0
TOTAL =		1.0
USE =		1.0



FILE NAME =	USER NAME = blackrt	DESIGNED - RTB	REVISED -
ci:\pw\work\p\midot\blackrt\d0128383\p8p20.dgn		DRAWN - JRP	REVISED -
	PLOT SCALE = 40.0000' / IN.	CHECKED -	REVISED -
	PLOT DATE = 8/18/2010	DATE - 06/2008	REVISED -

**STATE OF ILLINOIS
DEPARTMENT OF TRANSPORTATION**

**SCHEDULE OF QUANTITIES
EROSION CONTROL DETAILS**

SCALE: 1" = 20' SHEET NO. OF SHEETS STA. 45+00.00 TO STA. 51+00.00

F.A.S. RTE.	SECTION	COUNTY	TOTAL SHEETS	SHEET NO.
331	Z-BR	VERMILION	49	10
FED. ROAD DIST. NO. ILLINOIS FED. AID PROJECT			CONTRACT NO. 70016	