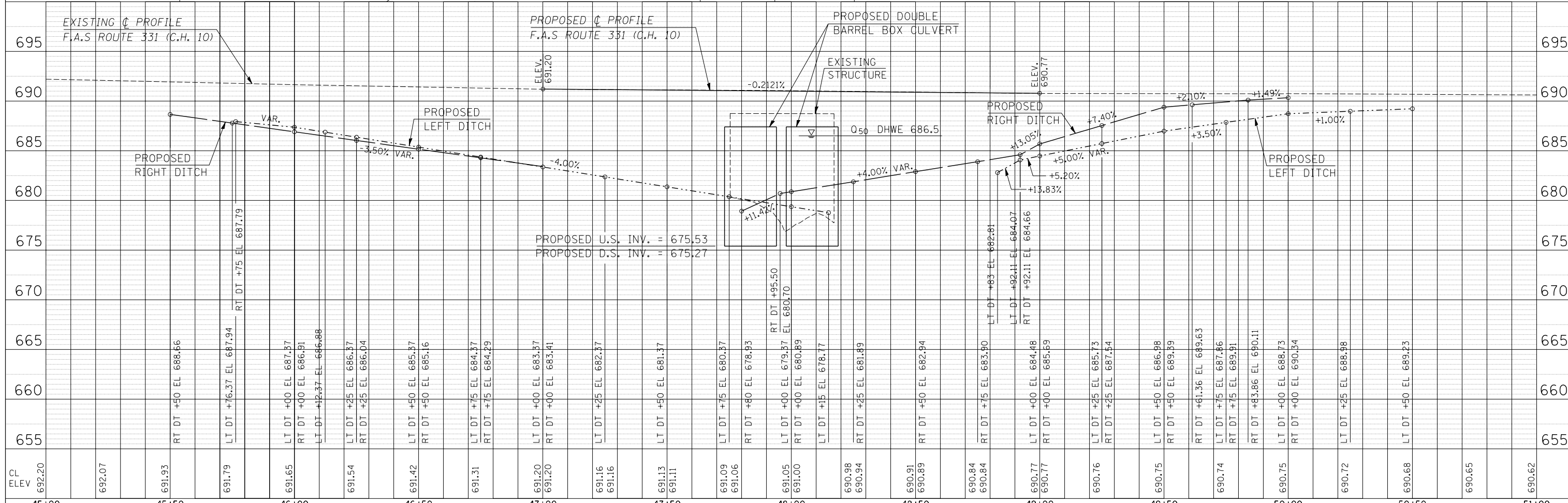
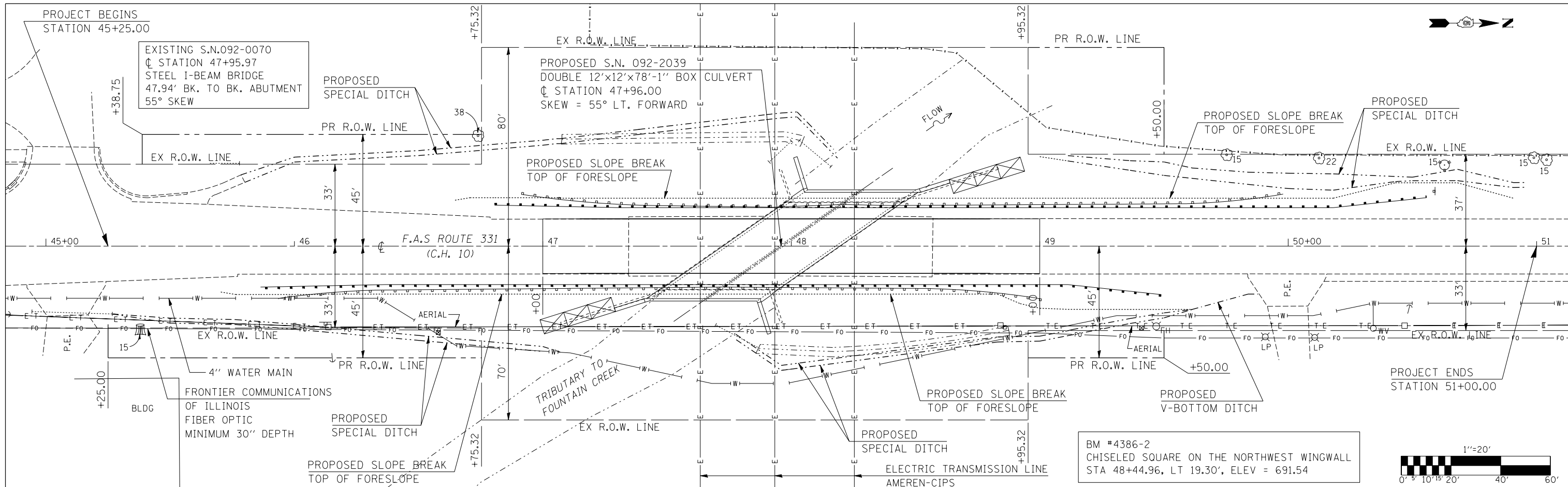


PLAN	SURVEYED	DATE
	PLOTTED	BY
	CHECKED	
	FILE NAME	
	NO.	

PROFILE	SURVEYED	DATE
	PLOTTED	BY
	CHECKED	
	STRUCTURE	
	NOTATION	
	NO.	



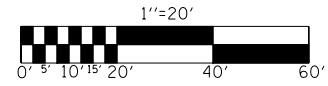
FILE NAME =	USER NAME = blackrt	DESIGNED - RTB	REVISED -
ci:\pwork\pwork\blackrt\d0128383\p&p20.dgn		DRAWN - JRP	REVISED -
PLOT SCALE = 40.0000' / IN.		CHECKED -	REVISED -
PLOT DATE = 8/18/2010		DATE - 06/2008	REVISED -

STATE OF ILLINOIS  
DEPARTMENT OF TRANSPORTATION

PLAN AND PROFILE F.A.S. 331 (CH 10)

SCALE: 1" = 20' SHEET NO. OF SHEETS STA. 45+00.00 TO STA. 51+00.00

F.A.S. RTE. 331	SECTION Z-BR	COUNTY VERMILION	TOTAL SHEETS 49	SHEET NO. 18
FED. ROAD DIST. NO.		ILLINOIS FED. AID PROJECT		



BM #4386-2  
CHISELED SQUARE ON THE NORTHWEST WINGWALL  
STA 48+44.96, LT 19.30', ELEV = 691.54