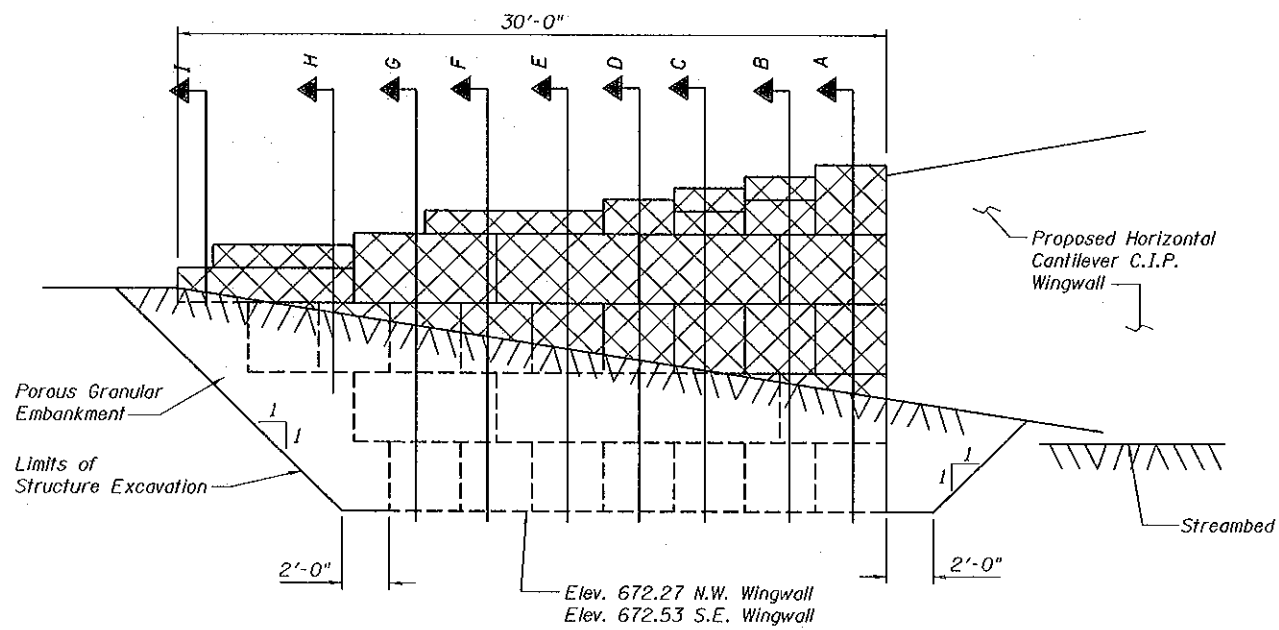
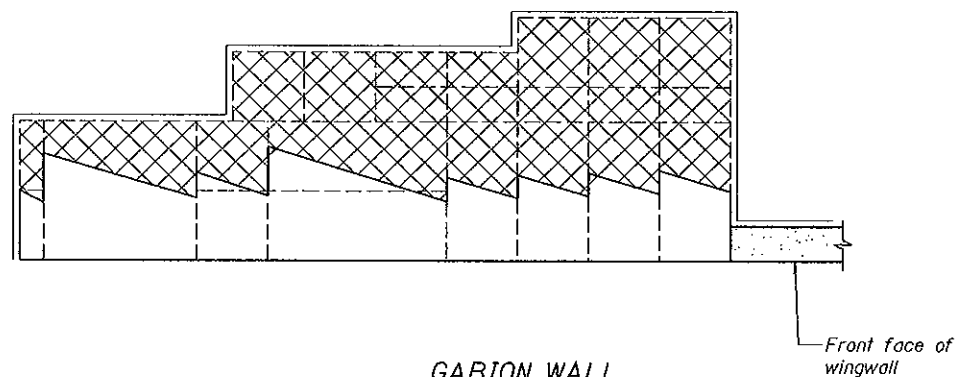


ROUTE NO.	SECTION	COUNTY	SHEET	SHEET	SHEET NO.
F.A.S. 331	Z-BR	Vermilion	49	22	- SHEETS
FED. ROAD DIST. NO. 7	ILLINOIS	FED. AID PROJECT			

Contract #70016



**GABION WALL
ELEVATION AT
SOUTHEAST WING**
(Northwest Wing similar)



**GABION WALL
PLAN**
SOUTHEAST WING WALL
(Northwest Wing similar)

GABION PLAN & ELEVATION

CH 10 / EAST LYNN ROAD OVER
TRIBUTARY TO FOUNTAIN CREEK
F.A.S. ROUTE 331 - SECTION Z-BR
VERMILION COUNTY
STATION 47+96.00
STRUCTURE NO. 092-2039

CHAMPAIGN, ILLINOIS
CHICAGO, ILLINOIS
EVANSVILLE, INDIANA
INDIANAPOLIS, INDIANA
KENOSHA, WISCONSIN
SPRING GREEN, WISCONSIN



REVISIONS	
NAME	DATE

NOTES: DIMENSIONAL DATA IS NOT TO BE OBTAINED BY SCALING
ANY PORTION OF THIS DRAWING.

DESIGNED BY: S.M.M. PROJECT NO: 102313
DRAWN BY: J.E.W. DATE: 8/05
CHECKED BY: M.M.
APPROVED BY: XXX
ACTIVITY: INTERNS

DRAWING NUMBER
S-4