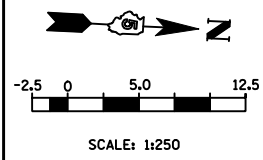
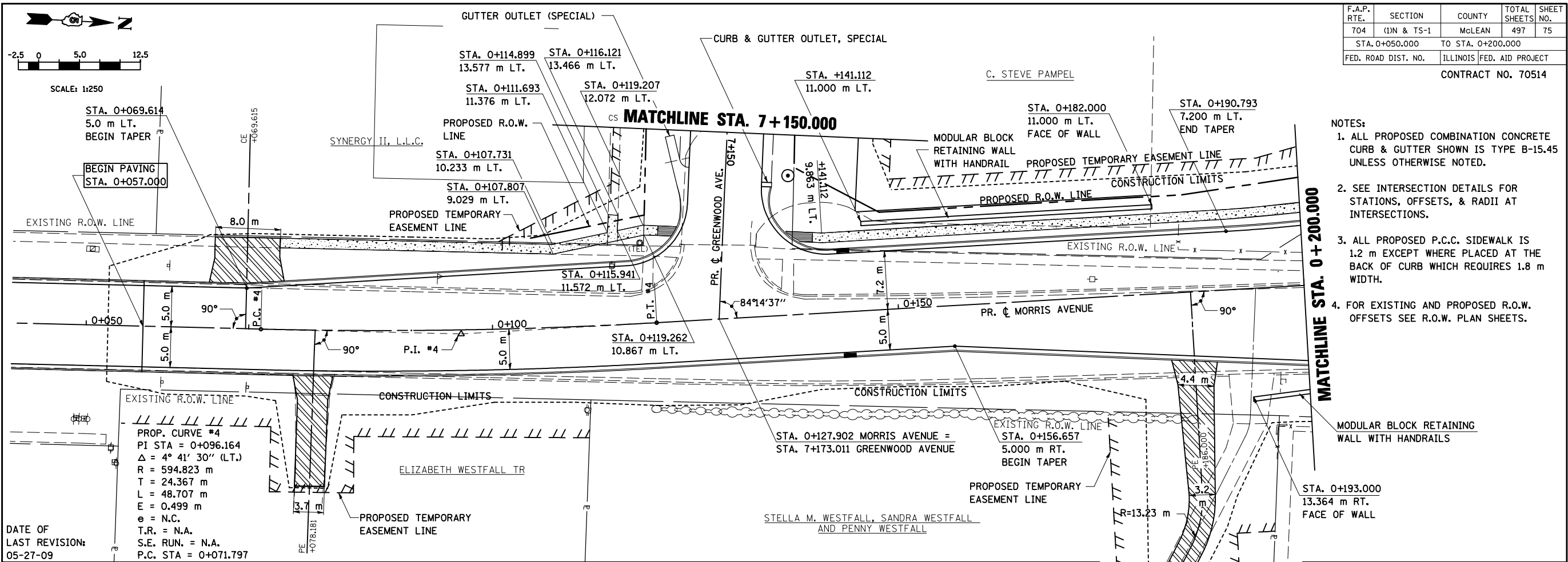


F.A.P. RTE.	SECTION	COUNTY	TOTAL SHEETS	SHEET NO.
704	(1)N & TS-1	McLEAN	497	75
STA. 0+050.000		TO STA. 0+200.000		
FED. ROAD DIST. NO.	ILLINOIS FED. AID PROJECT		CONTRACT NO. 70514	

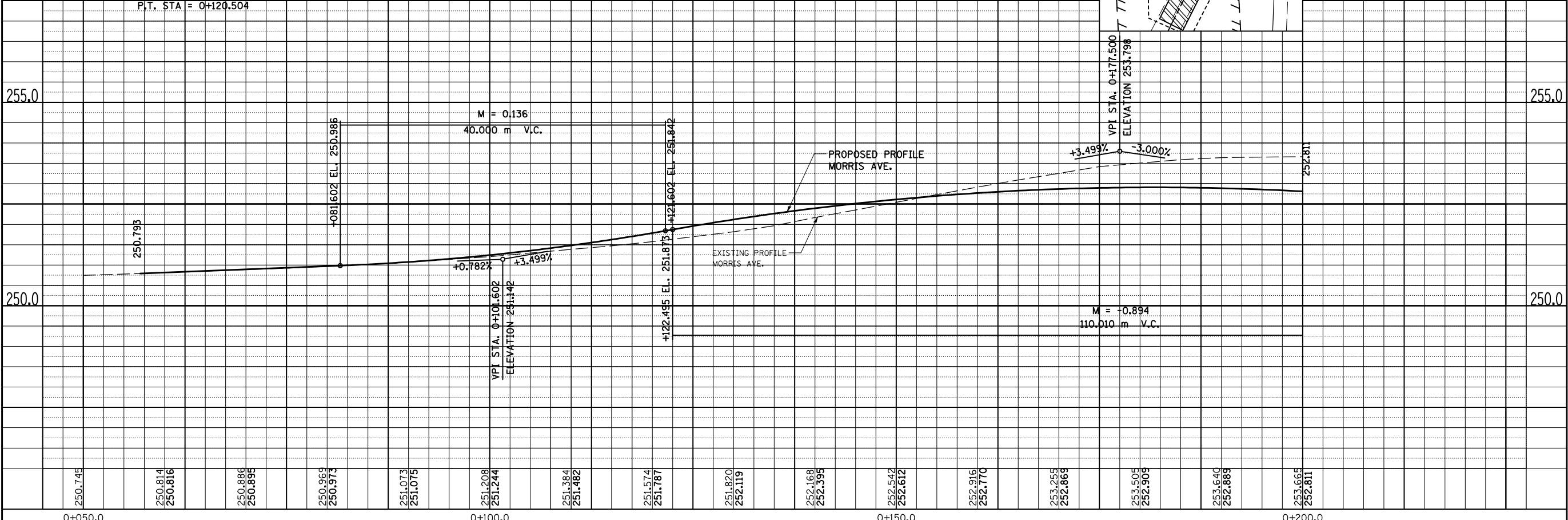


FINAL SURVEYED	DATE
SURVEY PLOTTED	
NOTE BOOK TEMPLATE	
AREAS CHECKED	
NO.	

ORIGINAL SURVEYED	DATE
SURVEY PLOTTED	
NOTE BOOK TEMPLATE	
AREAS CHECKED	
NO.	



- NOTES:
1. ALL PROPOSED COMBINATION CONCRETE CURB & GUTTER SHOWN IS TYPE B-15.45 UNLESS OTHERWISE NOTED.
  2. SEE INTERSECTION DETAILS FOR STATIONS, OFFSETS, & RADII AT INTERSECTIONS.
  3. ALL PROPOSED P.C.C. SIDEWALK IS 1.2 m EXCEPT WHERE PLACED AT THE BACK OF CURB WHICH REQUIRES 1.8 m WIDTH.
  4. FOR EXISTING AND PROPOSED R.O.W. OFFSETS SEE R.O.W. PLAN SHEETS.



**MORRIS AVENUE, PLAN & PROFILE, STA. 0+050.000 TO STA. 0+200.000**