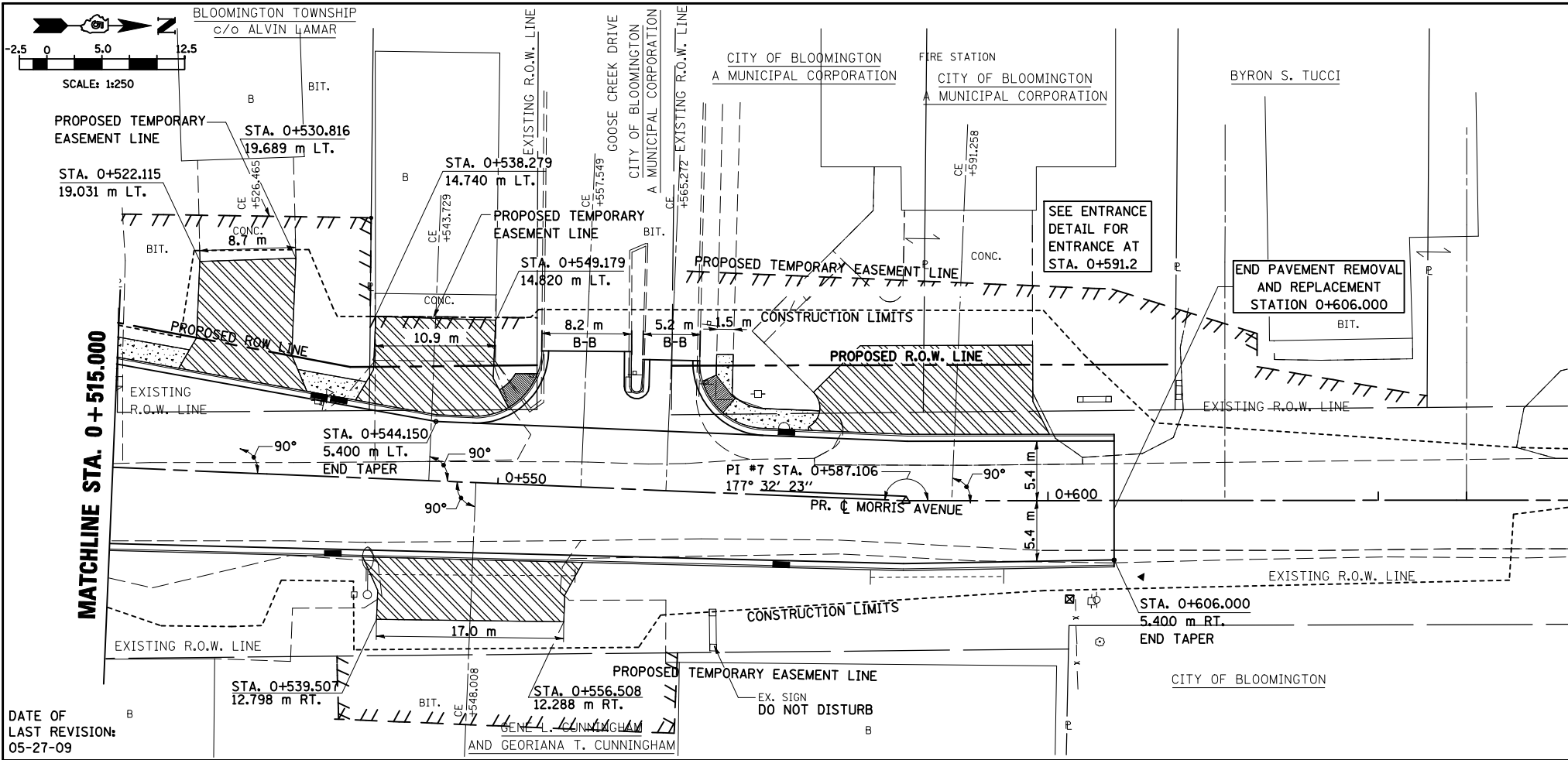
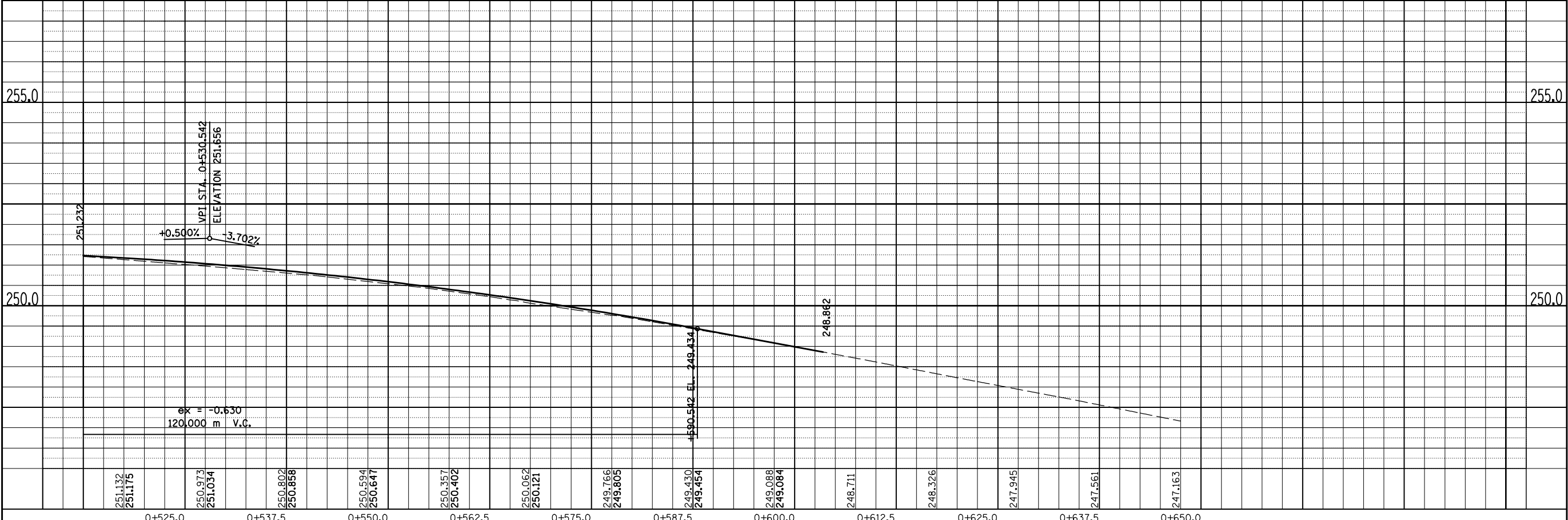


F.A.P. RTE.	SECTION	COUNTY	TOTAL SHEETS	SHEET NO.
704	(1)N & TS-1	McLEAN	497	78
STA. 0+515.000		TO STA. 0+650.000		
FED. ROAD DIST. NO.		ILLINOIS FED. AID PROJECT		
CONTRACT NO. 70514				



- NOTES:
1. ALL PROPOSED COMBINATION CONCRETE CURB & GUTTER SHOWN IS TYPE B-15.45 UNLESS OTHERWISE NOTED.
 2. SEE INTERSECTION DETAILS FOR STATIONS, OFFSETS, & RADII AT INTERSECTIONS.
 3. ALL PROPOSED P.C.C. SIDEWALK IS 1.8 m UNLESS OTHERWISE NOTED.
 4. FOR EXISTING AND PROPOSED R.O.W. OFFSETS SEE R.O.W. PLAN SHEETS.



MORRIS AVENUE, PLAN & PROFILE, STA. 0 + 515.000 TO STA. 0 + 650.000

DATE	BY

DATE	BY

FINAL SURVEY PLOTTED
NOTE BOOK TEMPLATE AREAS CHECKED

ORIGINAL SURVEY PLOTTED
NOTE BOOK TEMPLATE AREAS CHECKED

DATE OF LAST REVISION:
05-27-09