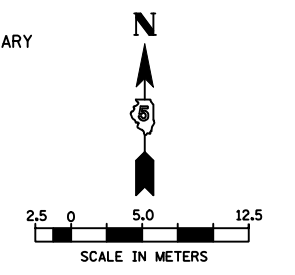
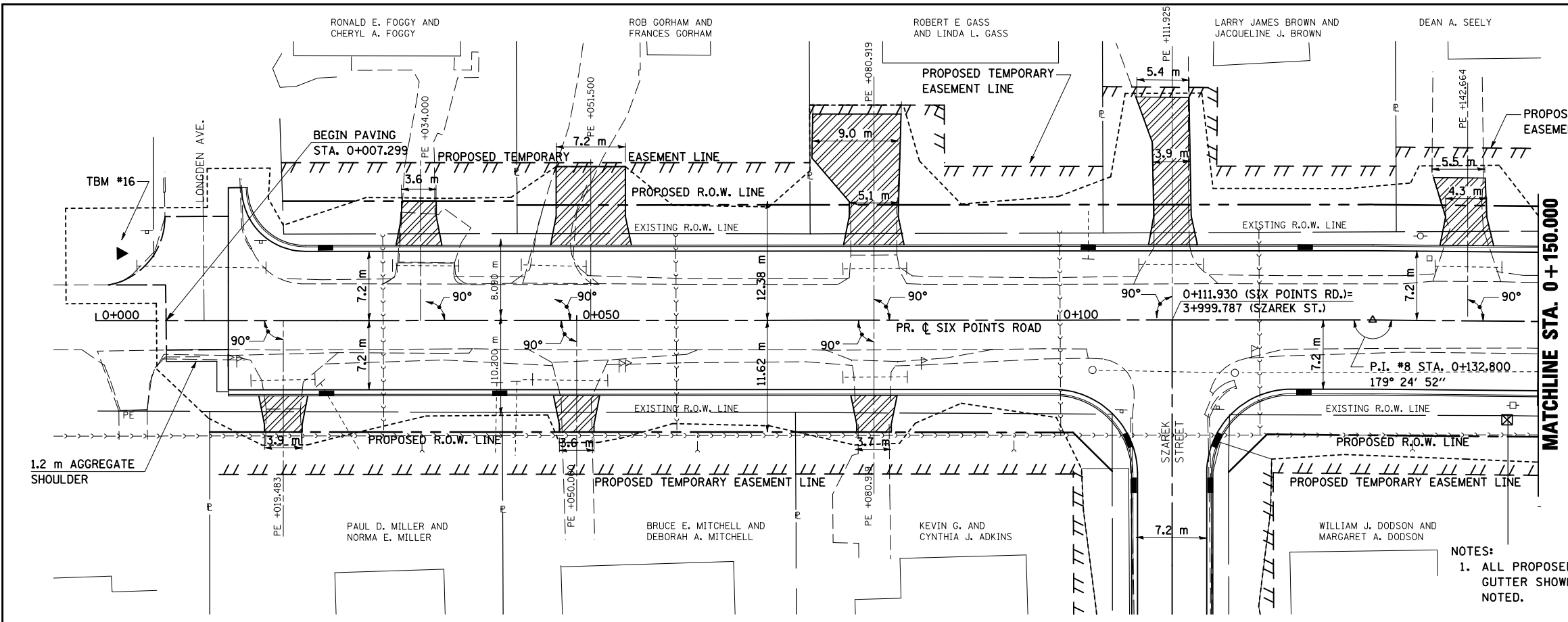


F.A.P. RTE.	SECTION	COUNTY	TOTAL SHEETS	SHEET NO.
704	(1)N & TS-1	McLEAN	497	79
STA. 0+000.000		TO STA. 0+150.000		
FED. ROAD DIST. NO.		ILLINOIS FED. AID PROJECT		
CONTRACT NO. 70514				



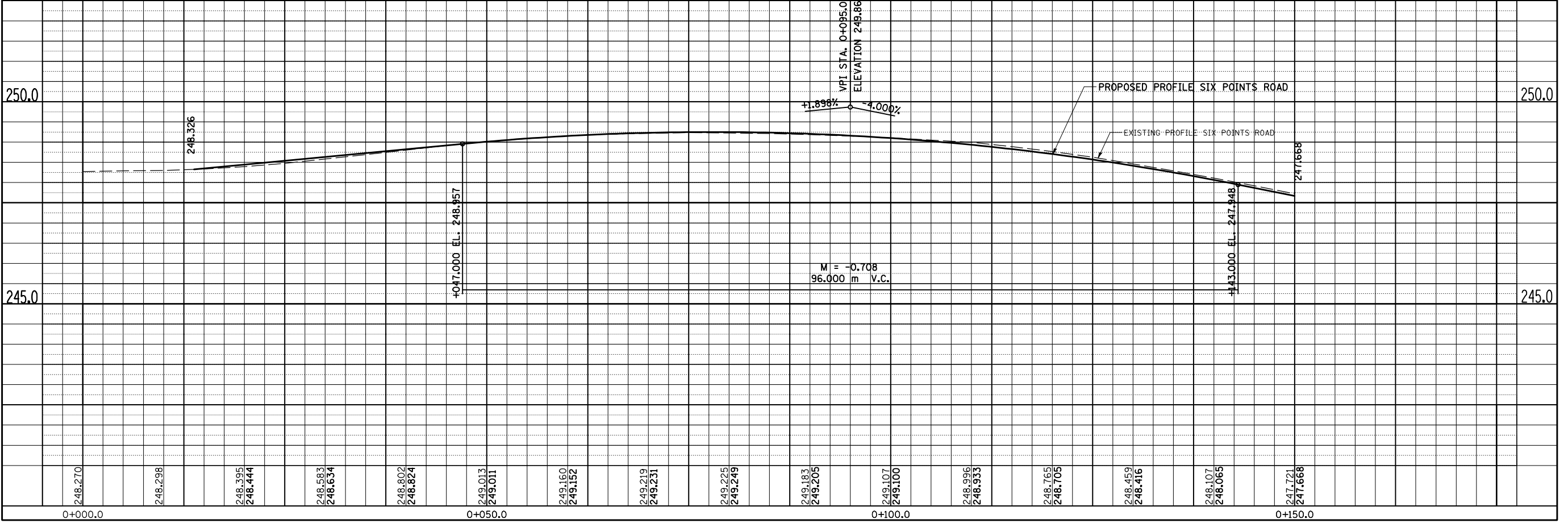
BY	DATE

BY	DATE



DATE OF LAST REVISION:
05-27-09

- NOTES:
1. ALL PROPOSED COMBINATION CONCRETE CURB & GUTTER SHOWN IS TYPE B-15.45 UNLESS OTHERWISE NOTED.
 2. SEE INTERSECTION DETAILS FOR STATIONS, OFFSETS, & RADII AT INTERSECTIONS.



SIX POINTS ROAD, PLAN & PROFILE, STA. 0+000.000 TO STA. 0+150.000