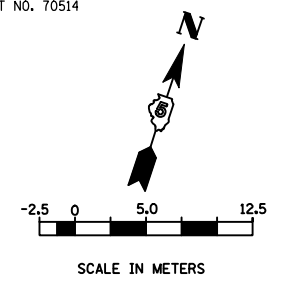
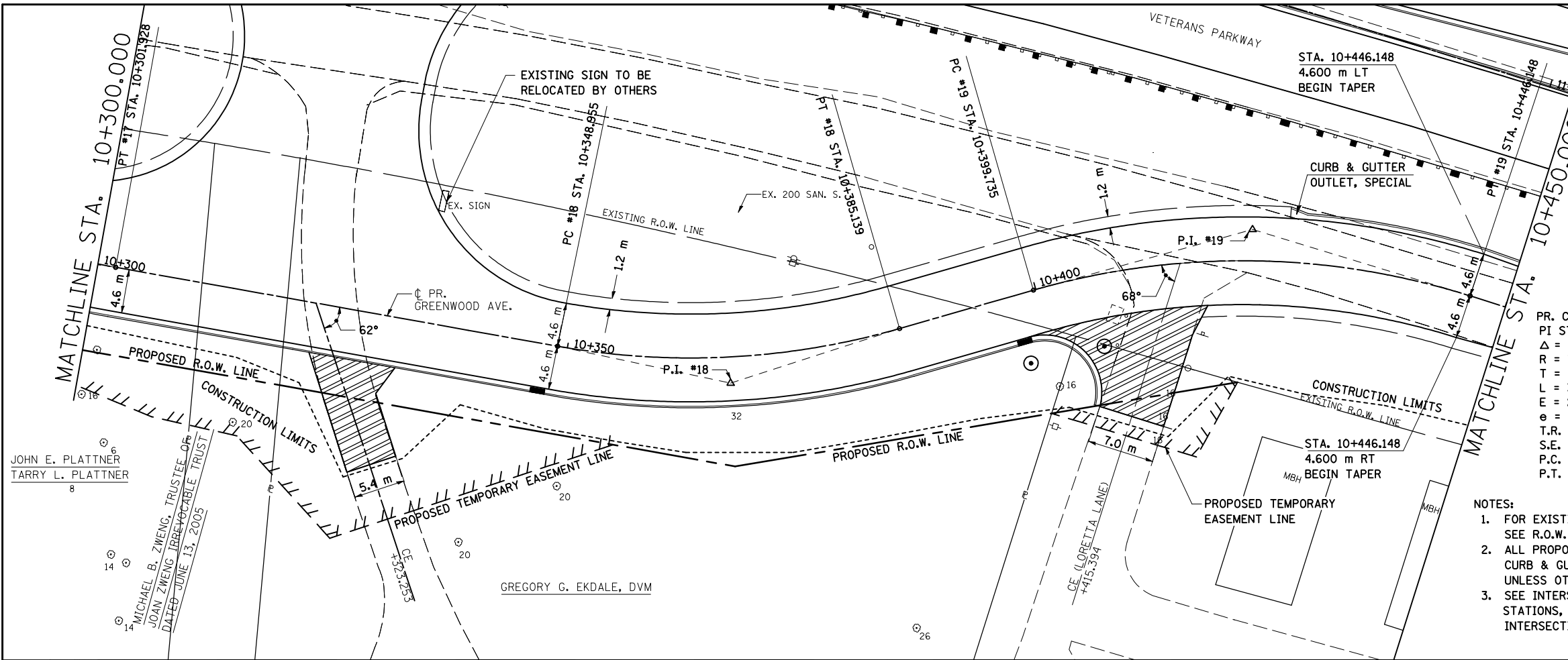


F.A.P. RT.E.	SECTION	COUNTY	TOTAL SHEETS	SHEET NO.
704	(1)N & TS-1	McLEAN	497	90
STA. 10+300.000 TO STA. 10+450.000		ILLINOIS FED. AID PROJECT		
FED. ROAD DIST. NO.		CONTRACT NO. 70514		



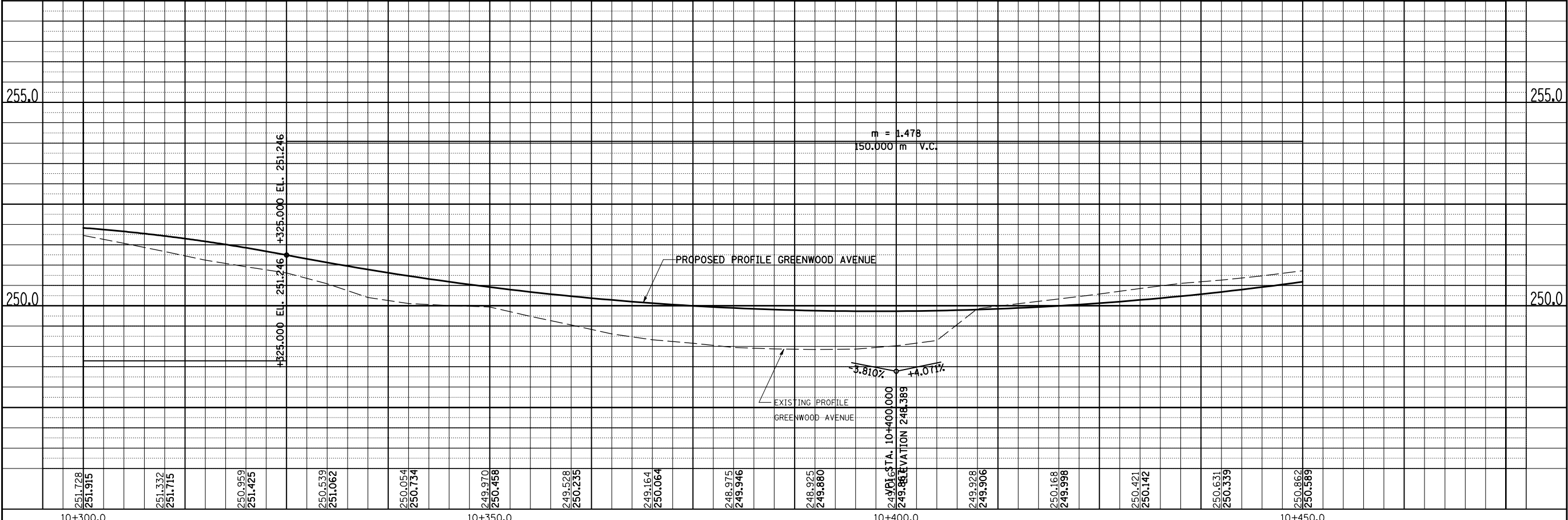
BY	DATE
FINAL SURVEYED	
SURVEY PLOTTED	
NOTE BOOK TEMPLATE	
AREAS CHECKED	
NO.	



PR. CURVE #18	PR. CURVE #19
PI STA = 10+367.368	PI STA = 10+423.629
$\Delta = 26^\circ 09' 41''$ (LT.)	$\Delta = 33^\circ 33' 22''$ (RT.)
R = 79.248 m	R = 79.248 m
T = 18.413 m	T = 23.893 m
L = 36.185 m	L = 46.413 m
E = 2.111 m	E = 3.524 m
e = N.C.	e = N.C.
T.R. = N.A.	T.R. = N.A.
S.E. RUN. = N.A.	S.E. RUN. = N.A.
P.C. STA = 10+348.955	P.C. STA = 10+399.735
P.T. STA = 10+385.139	P.T. STA = 10+446.148

- NOTES:
- FOR EXISTING AND PROPOSED OFFSETS SEE R.O.W. PLAN SHEETS.
  - ALL PROPOSED COMBINATION CONCRETE CURB & GUTTER SHOWN IS TYPE B-15.45 UNLESS OTHERWISE NOTED.
  - SEE INTERSECTION DETAILS FOR STATIONS, OFFSETS, & RADII AT INTERSECTIONS.
- DATE OF LAST REVISION: 05-27-09

BY	DATE
ORIGINAL SURVEYED	
SURVEY PLOTTED	
NOTE BOOK TEMPLATE	
AREAS CHECKED	
NO.	



**GREENWOOD AVENUE, PLAN & PROFILE, STA. 10+300.000 TO STA. 10+450.000**