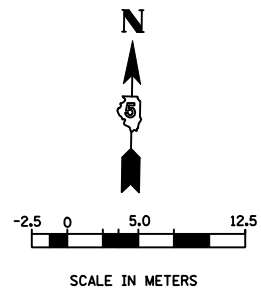
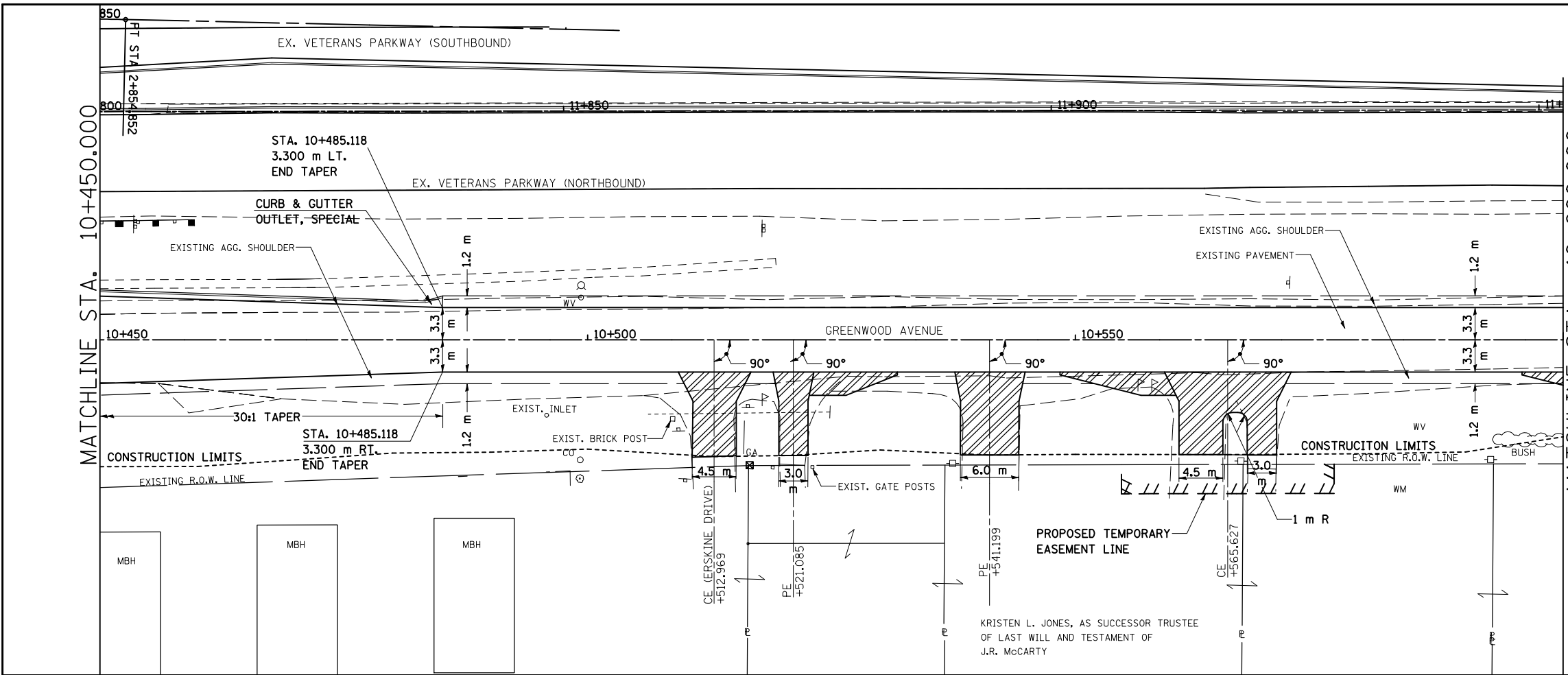


F.A.P. RT.E.	SECTION	COUNTY	TOTAL SHEETS	SHEET NO.
704	(1)N & TS-1	McLEAN	497	91
STA. 10+450.000		TO STA. 10+600.000		
FED. ROAD DIST. NO.		ILLINOIS	FED. AID PROJECT	
CONTRACT NO. 70514				



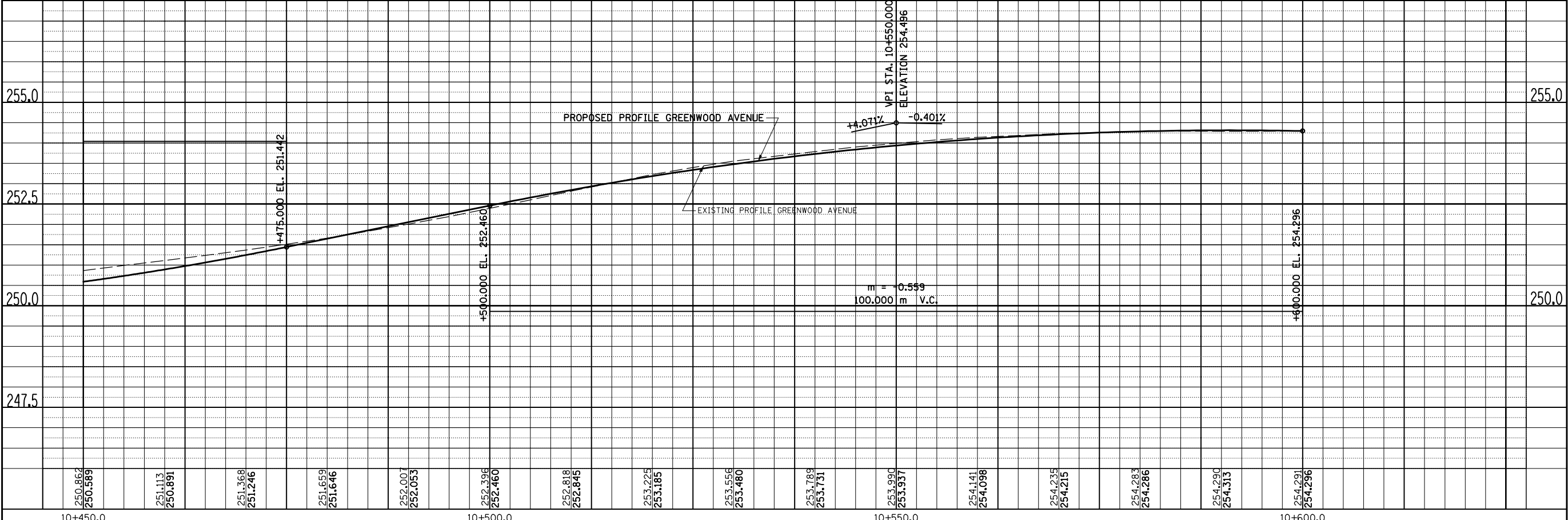
BY	DATE
FINAL SURVEYED	
SURVEY PLOTTED	
NOTE BOOK TEMPLATE	
AREAS CHECKED	
NO.	

BY	DATE
ORIGINAL SURVEYED	
SURVEY PLOTTED	
NOTE BOOK TEMPLATE	
AREAS CHECKED	
NO.	



NOTES:
1. FOR EXISTING AND PROPOSED OFFSETS SEE R.O.W. PLAN SHEETS.

DATE OF LAST REVISION:
05-27-09



GREENWOOD AVENUE, PLAN & PROFILE, STA. 10 + 450.000 TO STA. 10 + 600.000