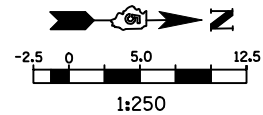
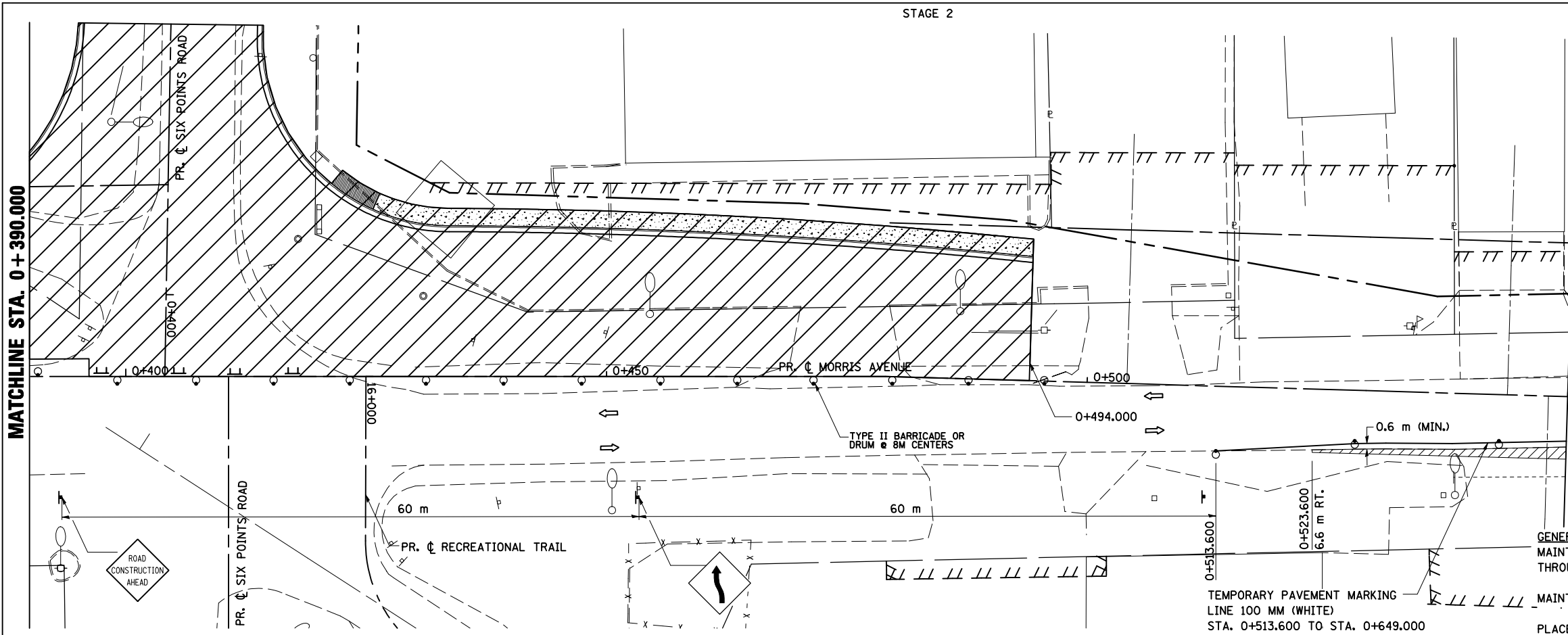


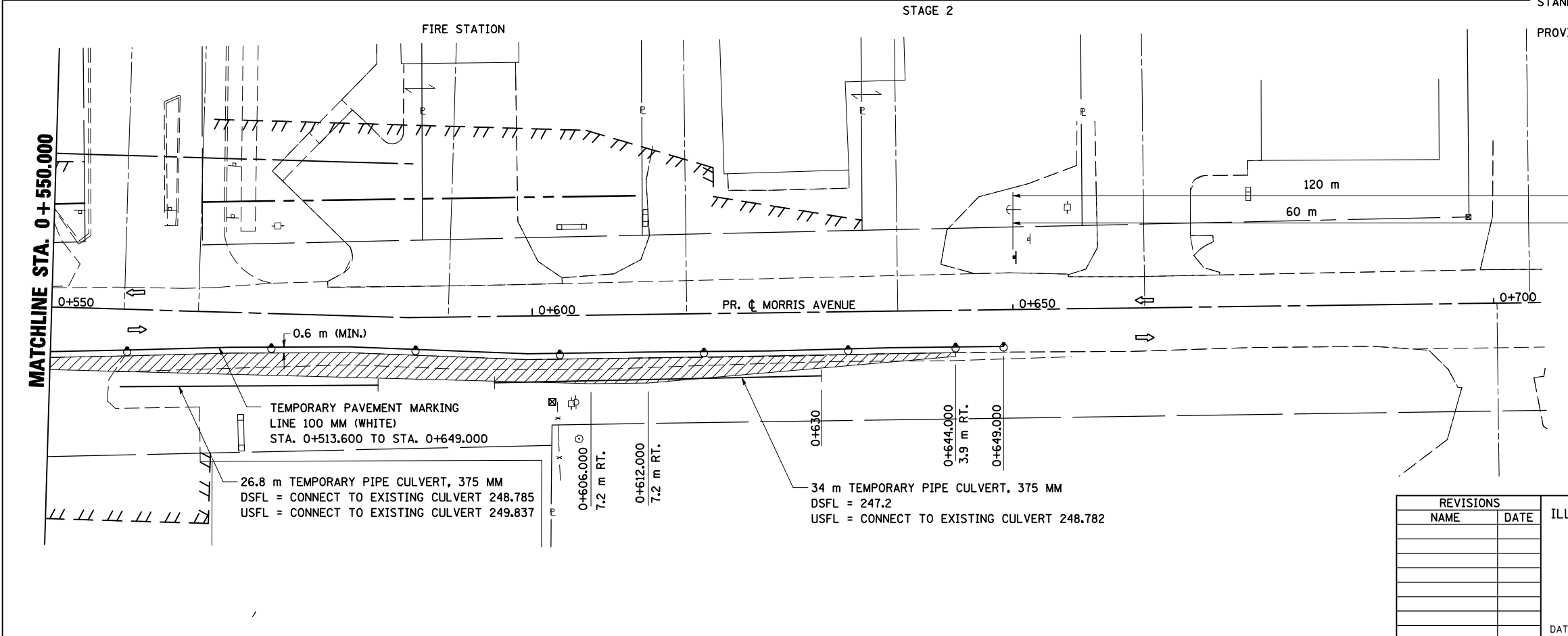
F.A.P. RTE.	SECTION	COUNTY	TOTAL SHEETS	SHEET NO.
704	(1)N & TS-1	MCLEAN	497	117
STA. 0+390.000		TO STA. 0+700.000		
FED. ROAD DIST. NO.	ILLINOIS FED. AID PROJECT		CONTRACT NO. 70514	



- LEGEND**
- TT TYPE III BARRICADE
 - + SIGN
 - DRUM, BARRICADE OR VERTICAL BARRICADE WITH STEADY BURNING LIGHT
 - ▨ WORK AREA
 - ▩ TEMPORARY PAVEMENT
 - ⇨ DIRECTION OF TRAFFIC



GENERAL STAGING NOTES
 MAINTAIN ACCESS TO ALL ADJACENT PROPERTIES THROUGHOUT THE DURATION OF THE PROJECT.
 MAINTAIN ACCESS TO FIRE STATION AT ALL TIMES.
 PLACE TYPE III BARRICADES IN ACCORDANCE WITH STANDARD 701901.



PROVIDE TEMPORARY MAILBOX SERVICE

LEGEND

- TT TYPE III BARRICADE
- + SIGN
- DRUM, BARRICADE OR VERTICAL BARRICADE WITH STEADY BURNING LIGHT
- ▨ WORK AREA
- ▩ TEMPORARY PAVEMENT
- ⇨ DIRECTION OF TRAFFIC

REVISIONS	
NAME	DATE

ILLINOIS DEPARTMENT OF TRANSPORTATION

STAGING PLANS
 STAGE 2 MORRIS AVENUE (NORTH)

DATE 05-27-09

DRAWN BY SAM
 CHECKED BY PMH

STAGING PLANS, STAGE 2 MORRIS AVENUE (NORTH)

PLOT DATE = 8/12/2010
 PLOT SCALE = 1:250
 USER NAME = crosbie