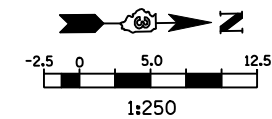


F.A.P. RTE.	SECTION	COUNTY	TOTAL SHEETS	SHEET NO.
704	(1)N & TS-1	McLEAN	497	127
STA. 0+000.000		TO STA. 0+250.000		
FED. ROAD DIST. NO.	ILLINOIS FED. AID PROJECT		CONTRACT NO. 70514	



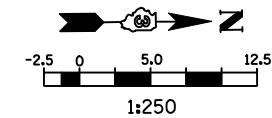
- LEGEND**
- TT TYPE III BARRICADE
  - ▲ SIGN
  - DRUM, BARRICADE OR VERTICAL BARRICADE WITH STEADY BURNING LIGHT
  - ▨ WORK AREA
  - ▩ TEMPORARY PAVEMENT
  - FLEXIBLE DELINEATORS
  - ⇨ DIRECTION OF TRAFFIC

**GENERAL STAGING NOTES**  
 MAINTAIN ACCESS TO ALL ADJACENT PROPERTIES THROUGHOUT THE DURATION OF THE PROJECT.

PLACE TYPE III BARRICADES IN ACCORDANCE WITH STANDARD 701901

CLOSE SIDEWALKS AS NECESSARY IN ACCORDANCE WITH STANDARD 701801.

**WORK TO BE COMPLETED IN STAGE 3**  
 CONSTRUCT FINAL PAVEMENT FROM STATION 0+022.000, RT TO STATION 0+150.000, RT.



- LEGEND**
- TT TYPE III BARRICADE
  - ▲ SIGN
  - DRUM, BARRICADE OR VERTICAL BARRICADE WITH STEADY BURNING LIGHT
  - ▨ WORK AREA
  - ▩ TEMPORARY PAVEMENT
  - FLEXIBLE DELINEATORS
  - ⇨ DIRECTION OF TRAFFIC

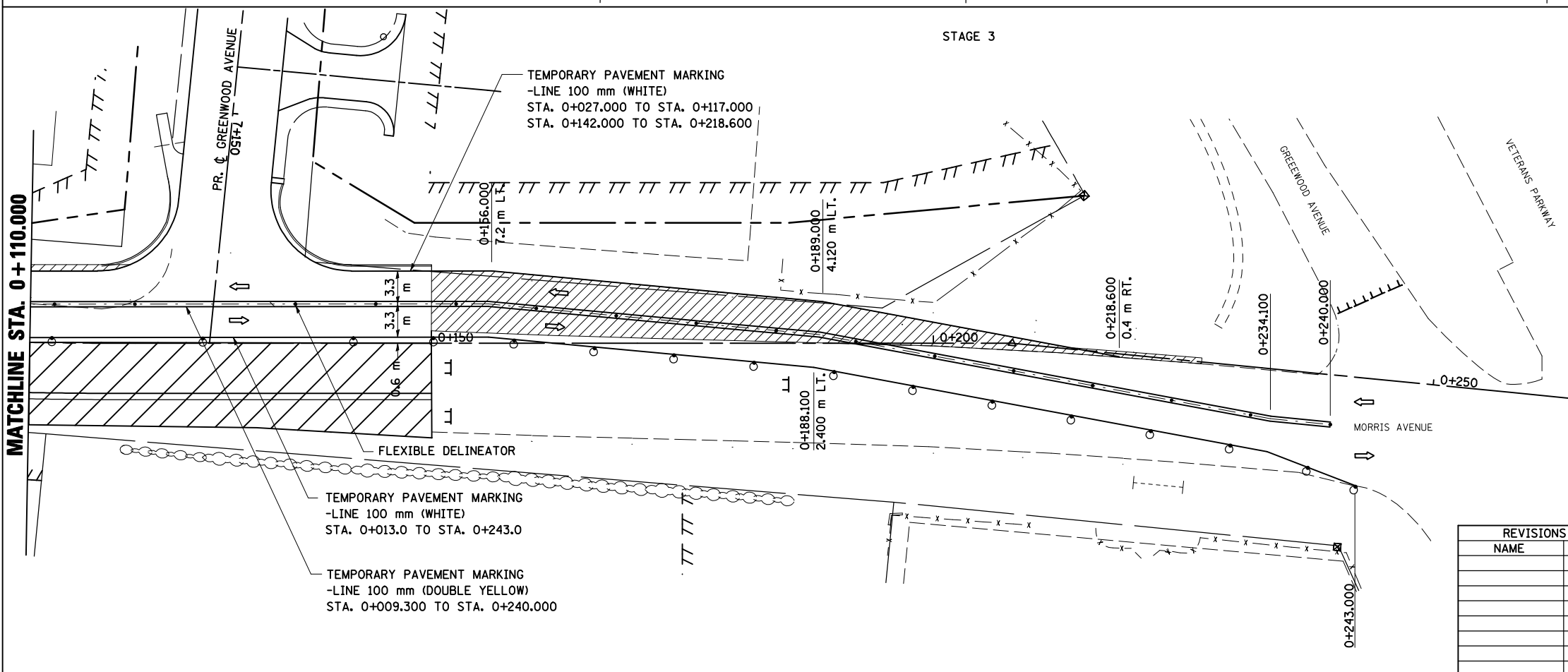
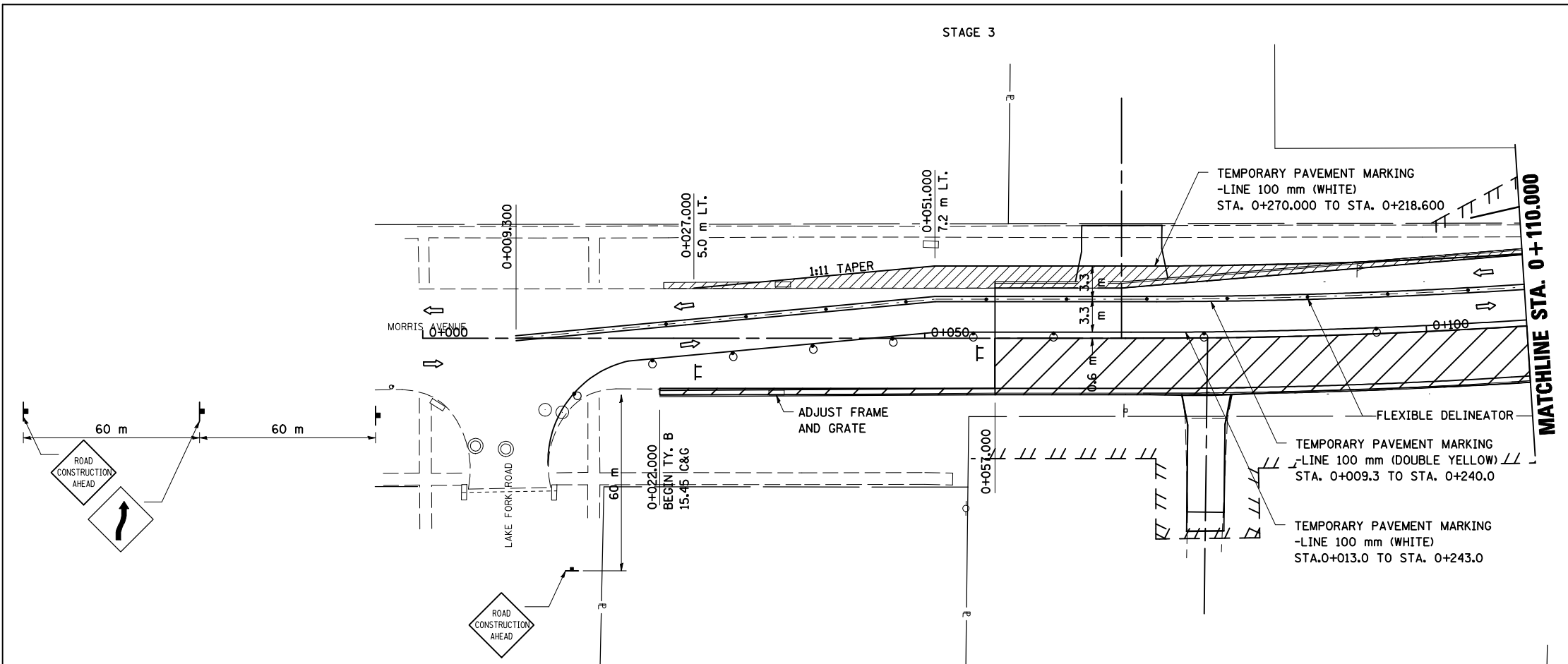
REVISIONS	
NAME	DATE

ILLINOIS DEPARTMENT OF TRANSPORTATION

STAGING PLANS  
 STAGE 3 MORRIS AVENUE (SOUTH)

DATE 03-31-09

DRAWN BY SAM  
 CHECKED BY PMH



PLOT DATE = 5/12/2010  
 PLOT SCALE = 1:250000 m / IN.  
 USER NAME = craig

**STAGING PLANS, STAGE 3 MORRIS AVENUE (SOUTH)**