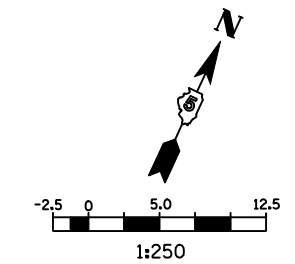
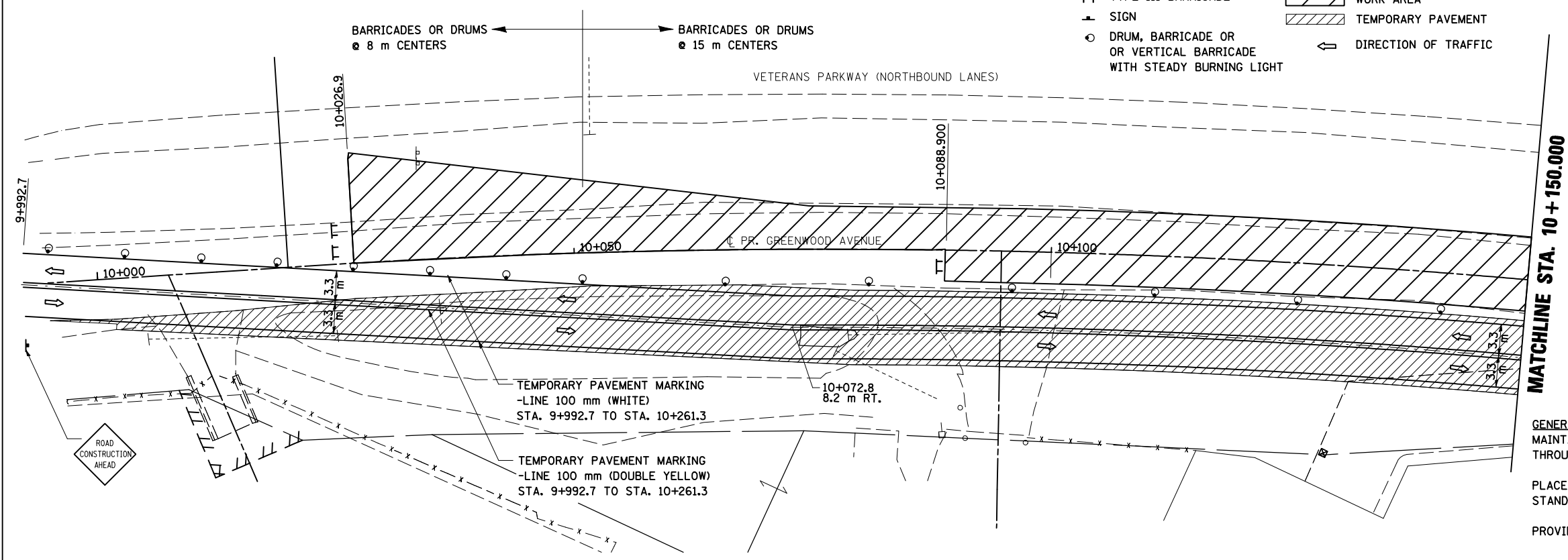


F.A.P. RTE.	SECTION	COUNTY	TOTAL SHEETS	SHEET NO.
704	(1)N & TS-1	McLEAN	497	128
STA. 10+000.000 TO STA. 10+300.000		ILLINOIS FED. AID PROJECT		
FED. ROAD DIST. NO.		CONTRACT NO. 70514		

STAGE 3

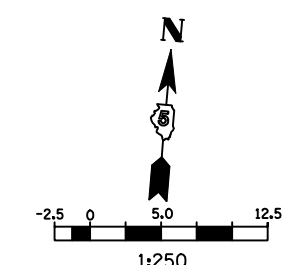
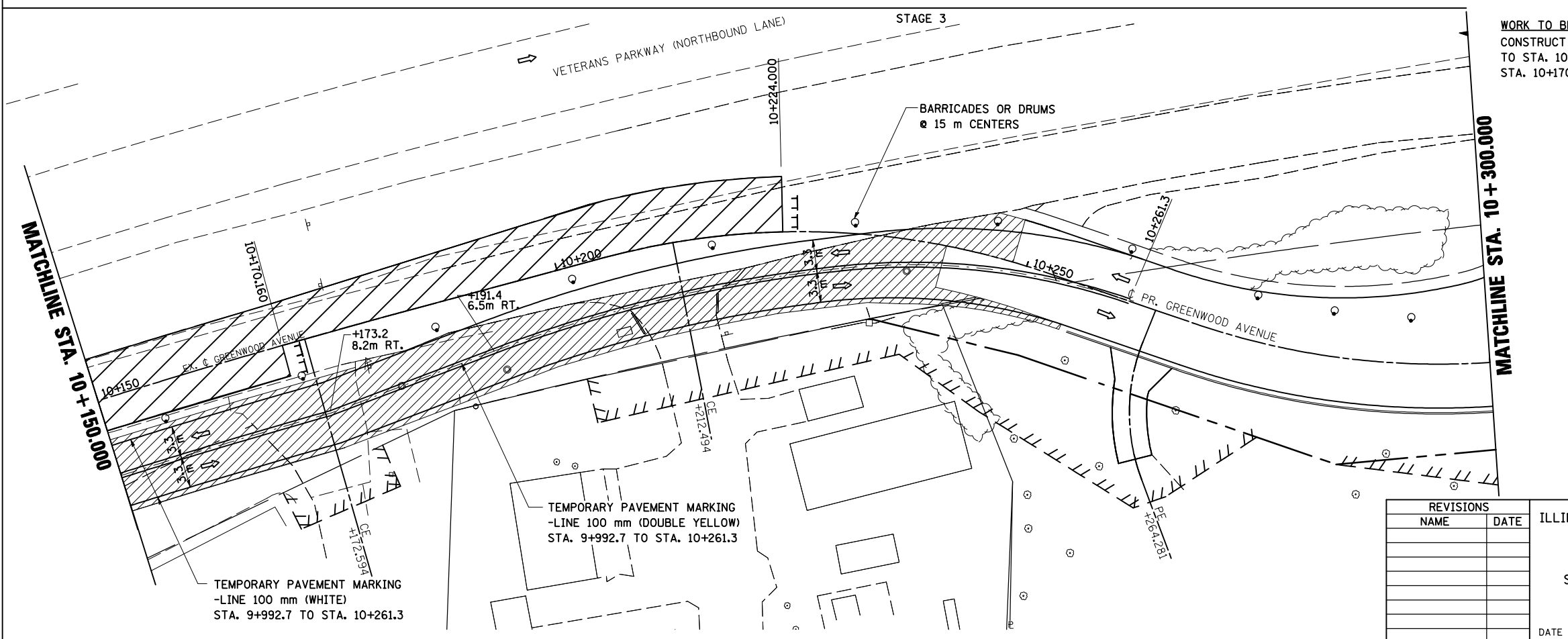
LEGEND

- TT TYPE III BARRICADE
- ⊥ SIGN
- DRUM, BARRICADE OR VERTICAL BARRICADE WITH STEADY BURNING LIGHT
- ▨ WORK AREA
- ▩ TEMPORARY PAVEMENT
- ⇨ DIRECTION OF TRAFFIC



GENERAL STAGING NOTES
 MAINTAIN ACCESS TO ALL ADJACENT PROPERTIES THROUGHOUT THE DURATION OF THE PROJECT.
 PLACE TYPE III BARRICADES IN ACCORDANCE WITH STANDARD 701901.
 PROVIDE TEMPORARY MAILBOX SERVICE

WORK TO BE COMPLETED IN STAGE 3
 CONSTRUCT FINAL PAVEMENT FROM STA. 10+026.9, LT. TO STA. 10+224.0, LT. AND STA. 10+091.18, RT. TO STA. 10+170.16, RT.



- LEGEND**
- TT TYPE III BARRICADE
 - ⊥ SIGN
 - DRUM, BARRICADE OR VERTICAL BARRICADE WITH STEADY BURNING LIGHT
 - ▨ WORK AREA
 - ▩ TEMPORARY PAVEMENT
 - ⇨ DIRECTION OF TRAFFIC

REVISIONS	
NAME	DATE

ILLINOIS DEPARTMENT OF TRANSPORTATION
 STAGING PLANS
 STAGE 3 GREENWOOD AVENUE (EAST)
 DRAWN BY SAM
 CHECKED BY PMH
 DATE 05-27-09

PLOT DATE = 6/12/2010
 FILE NAME = c:\pwworkspace\greenwood\stage3\stage3.dwg
 PLOT SCALE = 1:350000 m / in.
 USER NAME = craig

STAGING PLANS, STAGE 3 GREENWOOD AVENUE (EAST)