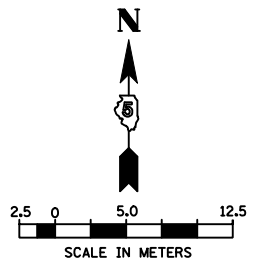
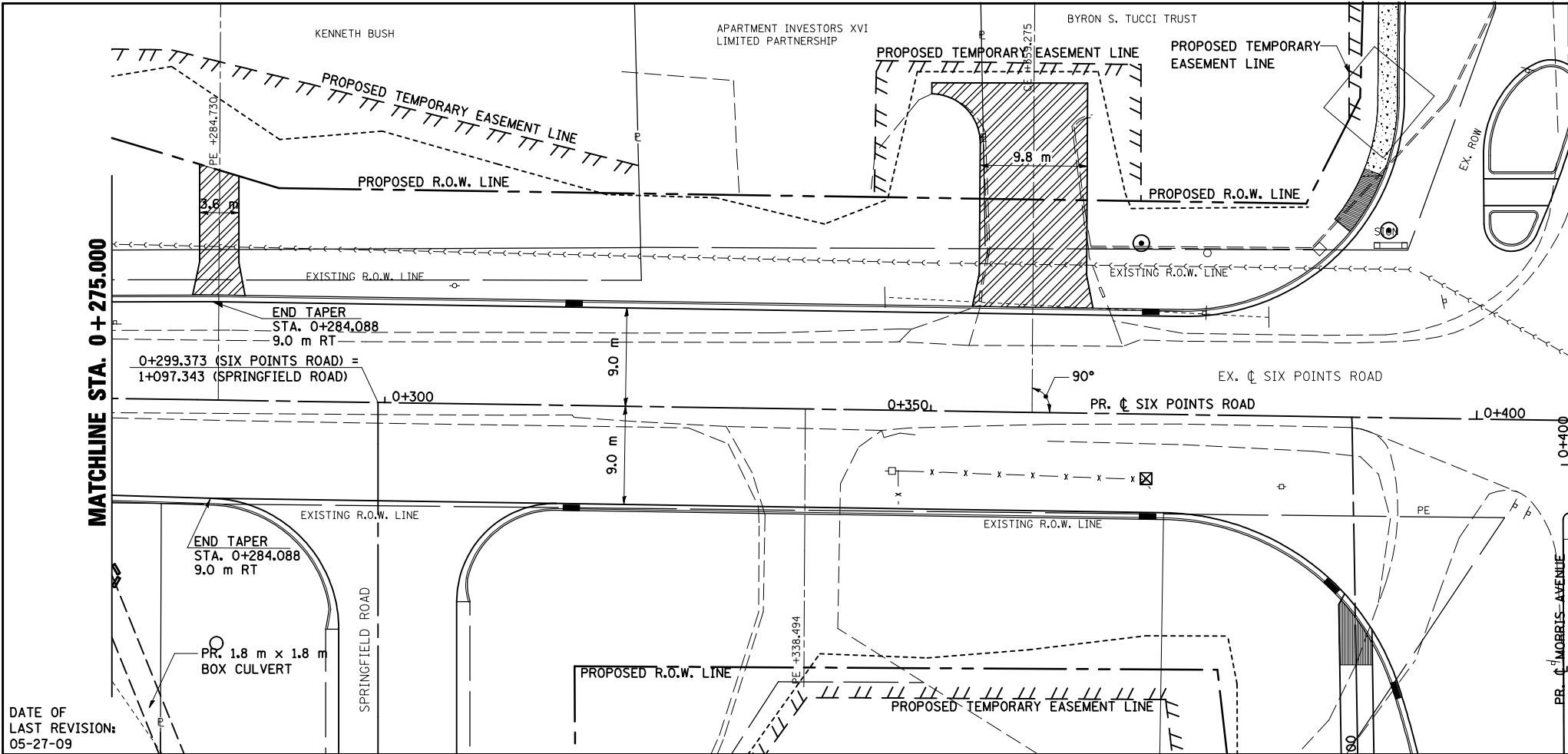


F.A.P. RTE.	SECTION	COUNTY	TOTAL SHEETS	SHEET NO.
704	(1)N & TS-1	McLEAN	497	81
STA. 0+275.000		TO STA. 0+408.500		
FED. ROAD DIST. NO.	ILLINOIS	FED. AID PROJECT		
CONTRACT NO. 70514				

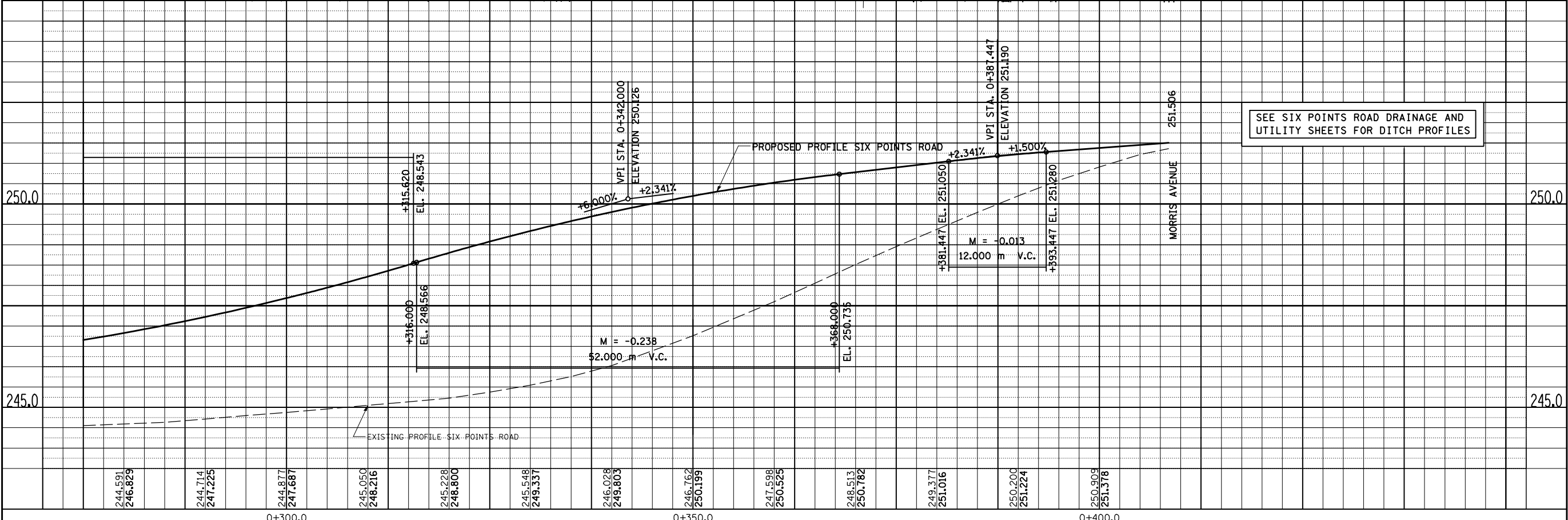


BY	DATE
FINAL SURVEYED	
SURVEY PLOTTED	
NOTE BOOK TEMPLATE	
AREAS CHECKED	
NO.	

BY	DATE
ORIGINAL SURVEYED	
SURVEY PLOTTED	
NOTE BOOK TEMPLATE	
AREAS CHECKED	
NO.	



- NOTES:
1. FOR EXISTING AND PROPOSED R. O. W. OFFSETS SEE R. O. W. PLAN, SHEETS.
  2. ALL PROPOSED COMBINATION CONCRETE CURB & GUTTER SHOWN IS TYPE B-15.45 UNLESS OTHERWISE NOTED.
  3. SEE INTERSECTION DETAILS FOR STATIONS, OFFSETS, & RADII AT INTERSECTIONS.
  4. ALL PROPOSED P. C. C. SIDEWALK IS 1.8 m UNLESS OTHERWISE NOTED.



SIX POINTS ROAD, PLAN & PROFILE, STA. 0+275.000 TO STA. 0+408.500

DATE OF LAST REVISION:  
05-27-09