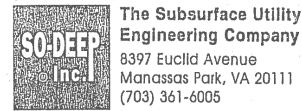


F.A.P. RTE.	SECTION	COUNTY	TOTAL SHEETS	SHEET NO.
704	(1)N & TS-1	McLEAN	497	196
STA. N/A		TO STA. N/A		
FED. ROAD DIST. NO.		ILLINOIS FED. AID PROJECT		

CONTRACT NO. 70514



The Subsurface Utility Engineering Company
8397 Euclid Avenue
Manassas Park, VA 20111
(703) 361-6005

So-Deep Test Hole Certification Form - Metric

© So-Deep, Inc. 1988, 1994

Control # **SILA093**
Test Hole # **9**
Plan Scale **1:250**
Sheet # **1**
Proposed Date **STORM X-ING OCTOBER 21, 2005**

City, County, State **MCLEAN CO., IL**
Gen. Loc. **INT. OF SIX POINTS & SZAREK RDS.**
Recorded Size/Material/Type **203MM UNK. MAT. WATER LINE**
Foreman/Truck#/Form By **J. HARLIN /221 /M. LOSE**

Condition of paving prior to work **NO PAVING**

B.M. 1 Elev. = **248.303M**
is **GIVEN**
Description: **(TRAV 2006) TOP OF RR SPIKE FOUND, @ STA. 0+011±, SIX POINTS RD.**

B.M. 2 Elev. = **249.784M**
is **CALCULATED**
Description: **CHIS "X" SET TOP BONNET BOLT OF F.H., 7M± LT OF STA. 0+105±, SIX POINTS RD.**

Benchmarks check **BY 0.003M**
Elevations are referenced to **B.M.#1**

Recorded Size/Type of utility **WAS FOUND**

There **WERE NOT** additional utilities in the test hole

The utility **WAS** in good condition.

Paving Thickness and type **NO PAVE**

Color of ribbon installed **BLUE**

Soil Type **DRY, HARD**

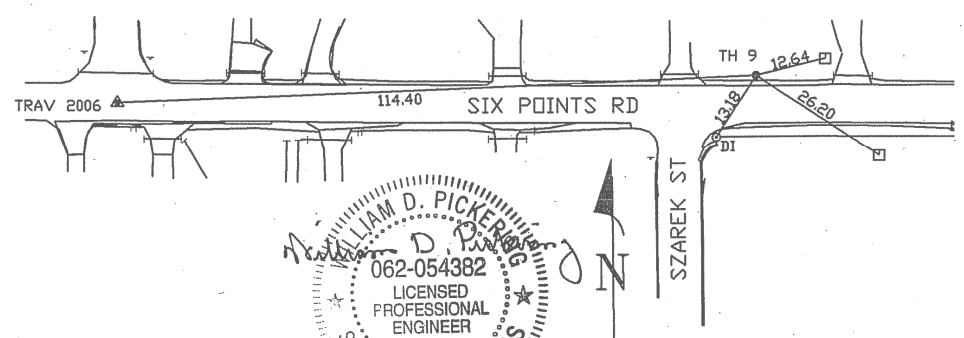
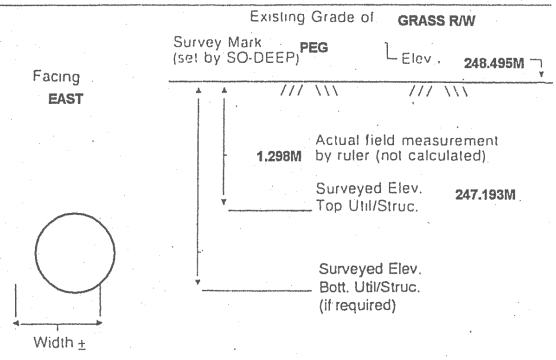
Field Condition **GRASS R/W**

T.H. tied to **PEG**

229MM C.I. WATER LINE
Size/Material/Type
Portion of pipe exposed for O.D. measurement:
FULL

Remarks: **NONE**

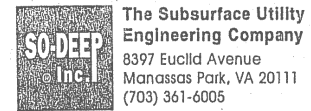
SO-DEEP will attempt to use the BM/Hi most applicable to your design. If however, BMs differ by more than .05, resulting differences could cause design conflicts.



- R/W = Rights of Way
- N.T.S. = Not to Scale
- * = Not Shown on Plan
- PCC = Precast Concrete
- COND. = Conduit
- CONC. = Concrete
- O.D. = Outside Diameter
- C.I. = Cast Iron
- D.I. = Ductile Iron
- RPC = Rough Pour Concrete
- CL = Centerline
- T.C. = Terra Cotta
- PLAS. = Plastic
- BL = Base Line
- ELEC. = Electric
- TELE = Telephone
- T.H. = Test Hole
- SW = Sidewalk
- DW = Driveway
- BM = Benchmark
- C.B. = Catch Basin
- GV = Gas Valve

Performing out-of-sight work...with vision.SM
All values are shown in meters (m) or millimeters (mm).
To convert to feet multiply meters by 3.2808.
Note: To eliminate mistakes and check this work, So-Deep suggests you scale and plot all dimensions onto the plans and review all elevations carefully. So-Deep is responsible only for information shown on our forms.

- Sewer Manhole
- Test Hole
- ⊕ Fire Hydrant
- ⊙ Pole
- x-x-x-x-x-x-x-x Fence Line
- ⊖ Electric Manhole
- ⊕ T.S. = Traverse Station
- ⊗ Valve
- ⊕ Water Meter
- ⊙ Telephone Manhole
- ⊖ Telephone Pedestal



The Subsurface Utility Engineering Company
8397 Euclid Avenue
Manassas Park, VA 20111
(703) 361-6005

So-Deep Test Hole Certification Form - Metric

© So-Deep, Inc. 1988, 1994

Control # **SILA093**
Test Hole # **10**
Plan Scale **1:250**
Sheet # **1**
Proposed Date **STORM X-ING OCTOBER 21, 2005**

City, County, State **MCLEAN CO., IL**
Gen. Loc. **INT. OF SIX POINTS & SZAREK RDS.**
Recorded Size/Material/Type **102MM STEEL GAS LINE**
Foreman/Truck#/Form By **J. HARLIN /221 /M. LOSE**

Condition of paving prior to work **NO PAVING**

B.M. 1 Elev. = **248.303M**
is **GIVEN**
Description: **(TRAV 2006) TOP OF RR SPIKE FOUND, @ STA. 0+011±, SIX POINTS RD.**

B.M. 2 Elev. = **249.784M**
is **CALCULATED**
Description: **CHIS "X" SET TOP BONNET BOLT OF F.H., 7M± LT OF STA. 0+105±, SIX POINTS RD.**

Benchmarks check **BY 0.003M**
Elevations are referenced to **B.M.#1**

Recorded Size/Type of utility **WAS FOUND**

There **WERE NOT** additional utilities in the test hole

The utility **WAS** in good condition.

Paving Thickness and type **NO PAVE**

Color of ribbon installed **YELLOW**

Soil Type **MOIST, CLAY**

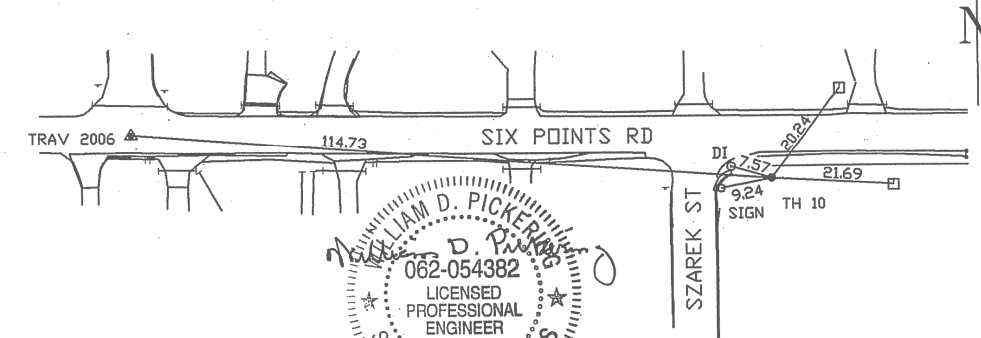
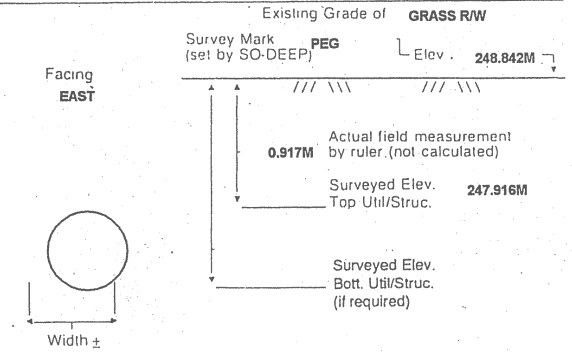
Field Condition **GRASS R/W**

T.H. tied to **PEG**

115MM WRAPPED STEEL GAS LINE
Size/Material/Type
Portion of pipe exposed for O.D. measurement:
FULL

Remarks: **NONE**

SO-DEEP will attempt to use the BM/Hi most applicable to your design. If however, BMs differ by more than .05, resulting differences could cause design conflicts.



- R/W = Rights of Way
- N.T.S. = Not to Scale
- * = Not Shown on Plan
- PCC = Precast Concrete
- COND. = Conduit
- CONC. = Concrete
- O.D. = Outside Diameter
- C.I. = Cast Iron
- D.I. = Ductile Iron
- RPC = Rough Pour Concrete
- CL = Centerline
- T.C. = Terra Cotta
- PLAS. = Plastic
- BL = Base Line
- ELEC. = Electric
- TELE = Telephone
- T.H. = Test Hole
- SW = Sidewalk
- DW = Driveway
- BM = Benchmark
- C.B. = Catch Basin
- GV = Gas Valve

Performing out-of-sight work...with vision.SM
All values are shown in meters (m) or millimeters (mm).
To convert to feet multiply meters by 3.2808.
Note: To eliminate mistakes and check this work, So-Deep suggests you scale and plot all dimensions onto the plans and review all elevations carefully. So-Deep is responsible only for information shown on our forms.

- Sewer Manhole
- Test Hole
- ⊕ Fire Hydrant
- ⊙ Pole
- x-x-x-x-x-x-x-x Fence Line
- ⊖ Electric Manhole
- ⊕ T.S. = Traverse Station
- ⊗ Valve
- ⊕ Water Meter
- ⊙ Telephone Manhole
- ⊖ Telephone Pedestal

REVISIONS	
NAME	DATE

ILLINOIS DEPARTMENT OF TRANSPORTATION

SUBSURFACE UTILITY ENGINEERING DETAILS
SHEET 5 OF 11

DRAWN BY **SAM**
CHECKED BY **PMH**
DATE **5/27/09**