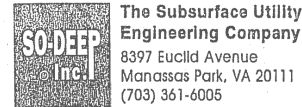


F.A.P. RTE.	SECTION	COUNTY	TOTAL SHEETS	SHEET NO.
704	(1)N & TS-1	McLEAN	497	200
STA. N/A		TO STA. N/A		
FED. ROAD DIST. NO.		ILLINOIS FED. AID PROJECT		
CONTRACT NO. 70514				



The Subsurface Utility Engineering Company  
8397 Euclid Avenue  
Manassas Park, VA 20111  
(703) 361-6005

### So-Deep Test Hole Certification Form - Metric

© So-Deep, Inc. 1988, 1994

Control # **SILA093**  
Test Hole # **17**  
Plan Scale **1:250**  
Sheet # **3**  
Proposed **STORM X-ING**  
Date **OCTOBER 19, 2005**

City, County, State **MCLEAN CO., IL**  
Gen. Loc. **W. OF INT., MORRIS AVE. & SIX POINTS RD.**  
Recorded Size/Material/Type **1 UNK. SIZE TELE. CABLE**  
Foreman/Truck#/Form By **J. HARLIN /221 /M. LOSE**

Condition of paving prior to work **ASPHALT IN GOOD COND.**

B.M. 1 Elev. = **251.463M**  
is **GIVEN**  
Description: **(TRAV 2000) TOP OF RR SPIKE FOUND; 20.40M ± RIGHT OF STATION 0+402.60±, S. MORRIS AVE.**

B.M. 2 Elev. = **250.851M**  
is **CALCULATED**  
Description: **CHIS. "X" SET TOP RIM SSMH; 14.0M± LEFT OF STATION 0+418.20±, S. MORRIS AVE.**

Benchmarks check **BY 0.003M**  
Elevations are referenced to **B.M.#2**

SO-DEEP will attempt to use the BM/Hi most applicable to your design. If however, BMs differ by more than .05', resulting differences could cause design conflicts.

Recorded Size/Type of utility **WAS FOUND**

There **WERE NOT** additional utilities in the test hole

The utility **WAS** in good condition.

Paving Thickness and type **203MM ASPH.**

Color of ribbon installed **ORANGE**

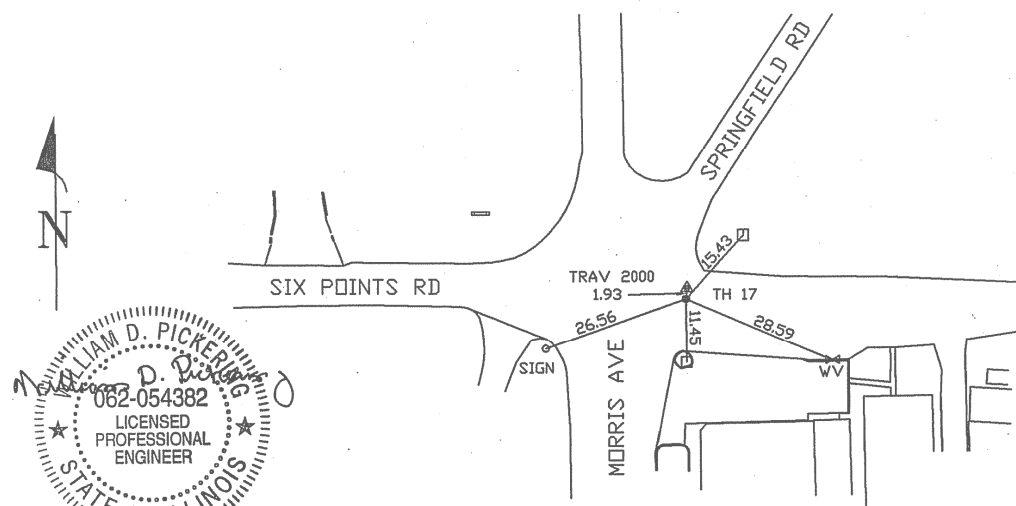
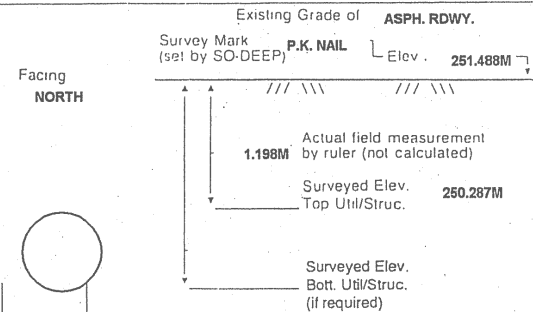
Soil Type **DRY, HARD CLAY**

Field Condition: **LIGHT RD. TRAFFIC**

T.H. tied to **P.K. NAIL**

(1) **64MM TELE. CABLE**  
Size/Material/Type  
Portion of pipe exposed for O.D. measurement:  
**FULL**

Remarks: **NONE**

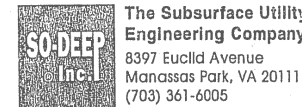


- RW = Rights of Way
- NT.S. = Not to Scale
- \* = Not Shown on Plan
- PCC = Precast Concrete
- COND. = Conduit
- CONC. = Concrete
- O.D. = Outside Diameter
- C.I. = Cast Iron
- D.I. = Ductile Iron
- RPC = Rough Pour Concrete
- CL = Centerline
- T.C. = Terra Cotta
- PLAS. = Plastic
- BL = Base Line
- ELEC. = Electric
- TELE = Telephone
- T.H. = Test Hole
- SW = Sidewalk
- DW = Driveway
- BM = Benchmark
- C.B. = Catch Basin
- GV = Gas Valve

*Performing out-of-sight work...with vision!*

All values are shown in meters (m) or millimeters (mm).  
To convert to feet multiply meters by 3.2808.  
Note: To eliminate mistakes and check this work, So-Deep suggests you scale and plot all dimensions onto the plans and review all elevations carefully. So-Deep is responsible only for information shown on our forms.

- = Sewer Manhole
- = Test Hole
- ⊕ = Fire Hydrant
- = Pole
- x-x-x-x-x = Fence Line
- ⊗ = Electric Manhole
- ⊕ = T.S. = Traverse Station
- ⊕ = Valve
- ⊕ = Water Meter
- ⊕ = Telephone Manhole
- ⊕ = Telephone Pedestal



The Subsurface Utility Engineering Company  
8397 Euclid Avenue  
Manassas Park, VA 20111  
(703) 361-6005

### So-Deep Test Hole Certification Form - Metric

© So-Deep, Inc. 1988, 1994

Control # **SILA093**  
Test Hole # **18**  
Plan Scale **1:250**  
Sheet # **3**  
Proposed **STORM X-ING**  
Date **OCTOBER 19, 2005**

City, County, State **MCLEAN CO., IL**  
Gen. Loc. **MORRIS AVE., S. OF SIX POINTS RD.**  
Recorded Size/Material/Type **(3) 102MM PLASTIC TELE. CONDUITS**  
Foreman/Truck#/Form By **J. HARLIN /221 /M. LOSE**

Condition of paving prior to work **NO PAVING**

B.M. 1 Elev. = **251.463M**  
is **GIVEN**  
Description: **(TRAV 2000) TOP OF RR SPIKE FOUND; 20.40M ± RIGHT OF STATION 0+402.60±, S. MORRIS AVE.**

B.M. 2 Elev. = **250.851M**  
is **CALCULATED**  
Description: **CHIS. "X" SET TOP RIM SSMH; 14.0M± LEFT OF STATION 0+418.20±, S. MORRIS AVE.**

Benchmarks check **BY 0.003M**  
Elevations are referenced to **B.M.#2**

SO-DEEP will attempt to use the BM/Hi most applicable to your design. If however, BMs differ by more than .05', resulting differences could cause design conflicts.

Recorded Size/Type of utility **WAS FOUND**

There **WERE** additional utilities in the test hole

The utility **WAS** in good condition.

Paving Thickness and type **NO PAVE**

Color of ribbon installed **ORANGE**

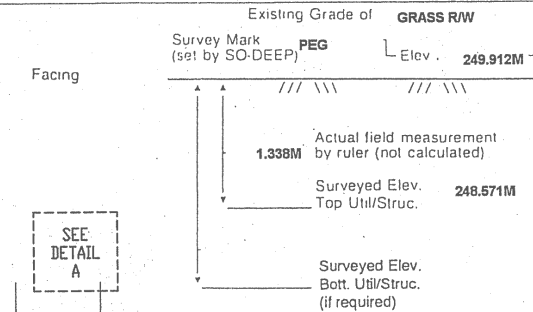
Soil Type **DRY, HARD CLAY**

Field Condition: **GRASS R/W**

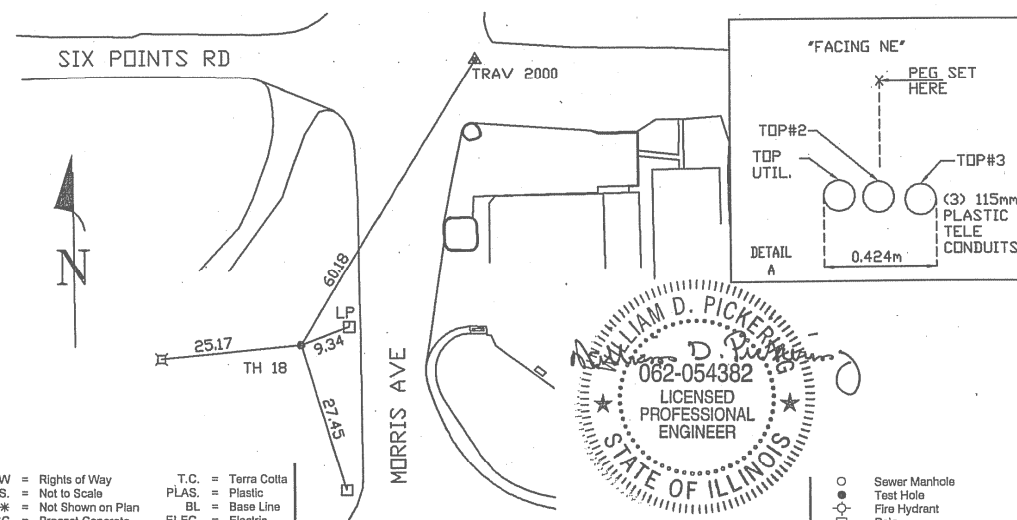
T.H. tied to **PEG**

(3) **115MM PLA. TELE CONDUITS**  
Size/Material/Type  
Portion of pipe exposed for O.D. measurement:  
**N/A**

Remarks: **NONE**



	TOP#2	TOP#3
ELEV.	248.601	248.592
ACTUAL	1.308	1.323



- RW = Rights of Way
- NT.S. = Not to Scale
- \* = Not Shown on Plan
- PCC = Precast Concrete
- COND. = Conduit
- CONC. = Concrete
- O.D. = Outside Diameter
- C.I. = Cast Iron
- D.I. = Ductile Iron
- RPC = Rough Pour Concrete
- CL = Centerline
- T.C. = Terra Cotta
- PLAS. = Plastic
- BL = Base Line
- ELEC. = Electric
- TELE = Telephone
- T.H. = Test Hole
- SW = Sidewalk
- DW = Driveway
- BM = Benchmark
- C.B. = Catch Basin
- GV = Gas Valve

*Performing out-of-sight work...with vision!*

All values are shown in meters (m) or millimeters (mm).  
To convert to feet multiply meters by 3.2808.  
Note: To eliminate mistakes and check this work, So-Deep suggests you scale and plot all dimensions onto the plans and review all elevations carefully. So-Deep is responsible only for information shown on our forms.

- = Sewer Manhole
- = Test Hole
- ⊕ = Fire Hydrant
- = Pole
- x-x-x-x-x = Fence Line
- ⊗ = Electric Manhole
- ⊕ = T.S. = Traverse Station
- ⊕ = Valve
- ⊕ = Water Meter
- ⊕ = Telephone Manhole
- ⊕ = Telephone Pedestal

REVISIONS		ILLINOIS DEPARTMENT OF TRANSPORTATION
NAME	DATE	
		<p style="text-align: center;">SUBSURFACE UTILITY ENGINEERING DETAILS SHEET 9 OF 11</p> <p style="text-align: right;">DRAWN BY <b>SAM</b> CHECKED BY <b>PMH</b></p>