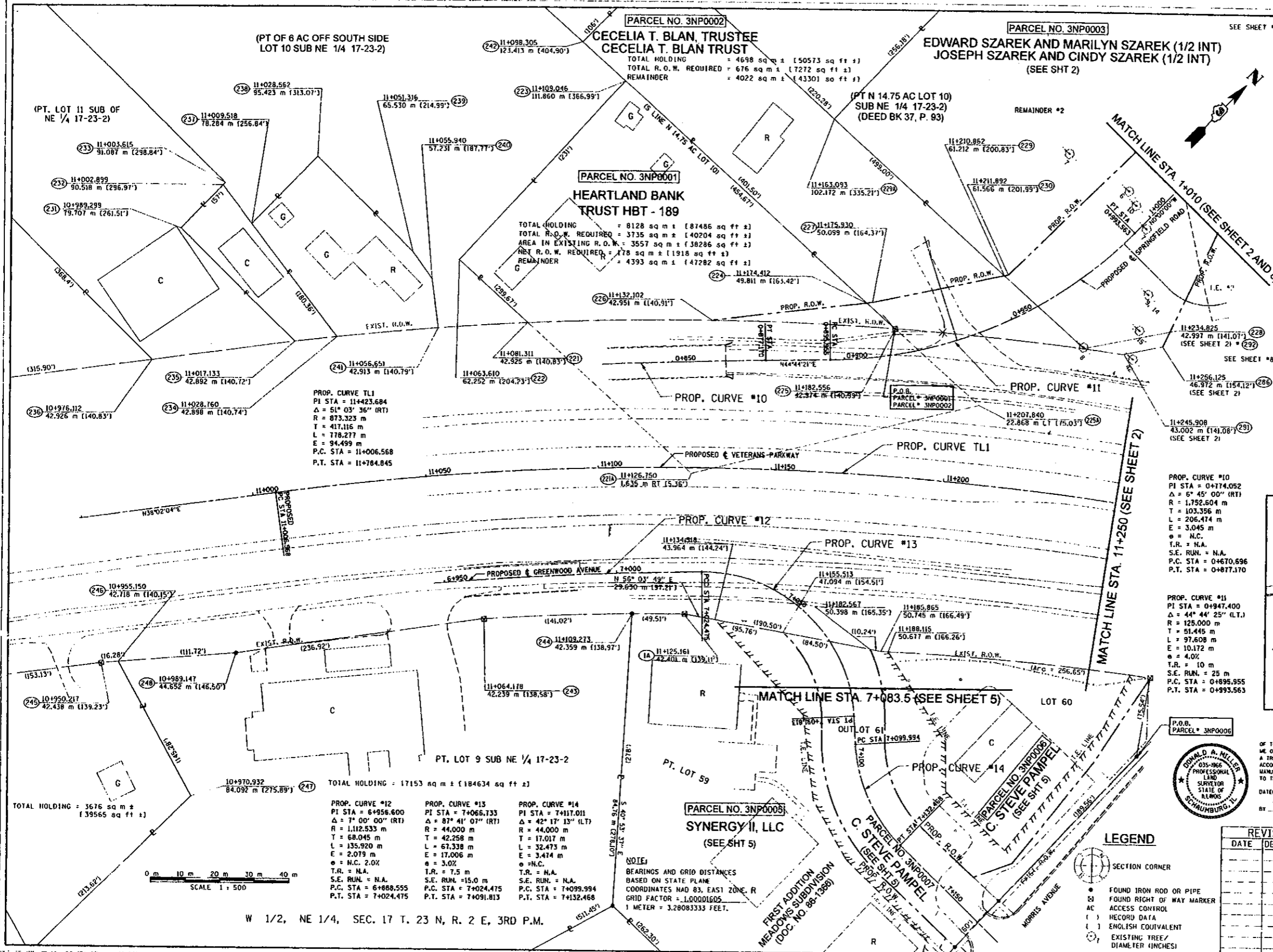
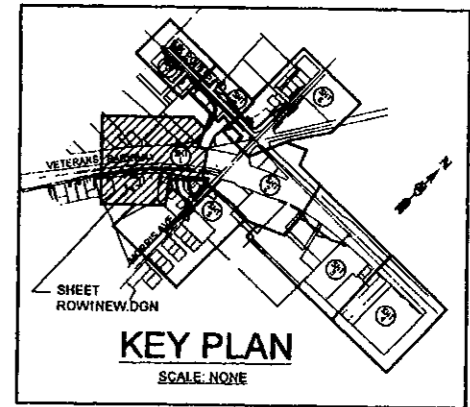


RECORDED AS DOCUMENT NO.



SEE SHEET #8

(119)	(230)	S 01° 09' 45" W	52.945 m (173.70')
(221)	(222)	S 88° 11' 52" W	26.938 m (88.38')
(221)	(221A)	N 88° 11' 52" E	64.400 m (211.29')
(222)	(223)	N 01° 31' 16" W	70.394 m (230.95')
(223)	(224)	N 87° 52' 26" E	94.565 m (310.25')
(223)	(242)	S 87° 52' 26" W	16.793 m (55.10')
(224)	(225)	N 87° 52' 26" E	10.968 m (35.99')
(224)	(226)	S 38° 54' 24" W	45.077 m (147.89')
(224)	(227)	N 38° 55' 43" E	1.631 m (5.35')
(225)	(225A)	N 87° 52' 26" E	32.970 m (108.17')
(227)	(229)	N 33° 38' 33" E	38.779 m (127.23')
(228)	(228)	S 87° 52' 23" W	31.250 m (102.53')
(229)	(230)	N 33° 40' 35" E	1.160 m (3.81')
(229)	(229A)	S 87° 52' 23" W	66.480 m (218.11')
(231)	(232)	N 00° 26' 53" W	17.374 m (57.00')
(231)	(235)	S 89° 30' 56" E	46.520 m (152.62')
(232)	(233)	N 00° 26' 53" W	0.914 m (3.00')
(232)	(237)	S 81° 19' 08" E	14.042 m (46.07')
(234)	(237)	N 81° 19' 08" W	40.932 m (134.29')
(237)	(238)	N 00° 26' 53" W	27.057 m (88.77')
(238)	(239)	S 89° 30' 56" E	38.871 m (127.53')
(239)	(240)	S 79° 41' 02" E	9.662 m (31.70')
(240)	(241)	S 51° 42' 41" E	14.338 m (47.04')
(243)	(248)	S 37° 33' 15" W	72.207 m (236.90')
(245)	(246)	N 41° 17' 20" E	4.941 m (16.21')
(246)	(247)	S 72° 50' 43" E	44.281 m (145.28')
(246)	(248)	N 41° 17' 20" E	34.052 m (111.72')
(251A)	(255A)	N 31° 58' 00" E	85.615 m (280.89')
(251A)	(259A)	S 00° 54' 05" E	78.083 m (256.18')
(251)	(259)	N 44° 34' 35" E	Lc = 53.280 m (174.80')
(221)	(241)	Rc = 915.862 m (3004.79')	Arc = 53.287 m (174.83')
(222)	(241)	S 42° 06' 03" E	Lc = 25.811 m (84.88')
(222)	(226)	Rc = 915.862 m (3004.79')	Arc = 25.872 m (84.88')
(225)	(226)	S 47° 54' 01" W	Lc = 52.929 m (173.65')
(225)	(228)	Rc = 915.862 m (3004.79')	Arc = 52.936 m (173.67')
(234)	(233)	N 51° 16' 15" E	Lc = 54.834 m (179.90')
(234)	(233)	Rc = 915.862 m (3004.79')	Arc = 54.842 m (179.93')
(234)	(233)	S 39° 04' 46" W	Lc = 12.198 m (40.02')
(234)	(233)	Rc = 915.862 m (3004.79')	Arc = 12.198 m (40.02')
(234)	(233)	N 40° 22' 35" E	Lc = 29.261 m (96.00')
(234)	(233)	Rc = 915.862 m (3004.79')	Arc = 29.262 m (96.00')
(235)	(236)	S 38° 21' 11" W	Lc = 10.978 m (36.02')
(235)	(236)	Rc = 915.862 m (3004.79')	Arc = 10.978 m (36.02')
(243)	(244)	N 43° 58' 28" E	Lc = 58.016 m (190.34')
(243)	(244)	Rc = 830.518 m (2724.79')	Arc = 58.028 m (190.38')



SURVEYOR'S STATEMENT

I, DONALD A. MILLER, HEREBY STATE THAT I AM A PROFESSIONAL LAND SURVEYOR OF THE STATE OF ILLINOIS THAT THE SURVEY OF PROPOSED FAP ROUTE 704 WAS MADE BY ME OR UNDER MY DIRECT SUPERVISION THAT THE LAND CORNER TIES AS SHOWN HEREON, ARE A TRUE AND CORRECT REPRESENTATION OF SAID SURVEY AND THAT THE PLAT HEREON IS IN ACCORDANCE WITH APPLICABLE SECTIONS OF THE LAND ACQUISITION POLICIES AND PROCEDURES MANUAL OF THE DEPARTMENT'S DISTRICT OFFICES. THIS PROFESSIONAL SERVICE CONFORMS TO THE CURRENT ILLINOIS MINIMUM STANDARDS FOR A BOUNDARY SURVEY.

DATE: MAY 10, 2007

BY: *Donald A. Miller*

DONALD A. MILLER ILLINOIS PROFESSIONAL LAND SURVEYOR NO. 035-1966
LICENSE EXPIRES DATE 11-30-08

REVISION	
DATE	DESCRIPTION

ILLINOIS DEPT. OF TRANSPORTATION
RIGHT OF WAY PLANS

ROUTE FAP 704 (I-55 BL. VETERAN'S PARKWAY)
SECTION (1) N. & TS-1

PROJECT
COUNTY McLEAN

JOB NUMBER R-93-005-98

STATION 10+950 TO 11+250

SCALE 1:500 SHEET 1 OF 8

- LEGEND**
- SECTION CORNER
 - FOUND IRON ROD OR PIPE
 - FOUND RIGHT OF WAY MARKER
 - ACCESS CONTROL
 - () RECORD DATA
 - () ENGLISH EQUIVALENT
 - () EXISTING TREE/DIAMETER (INCHES)

PROP. CURVE TL1
PI STA = 11+423.684
Δ = 51° 03' 36" (RT)
R = 873.323 m
T = 417.116 m
L = 778.277 m
E = 94.499 m
P.C. STA = 11+006.568
P.T. STA = 11+784.845

PROP. CURVE #12
PI STA = 6+958.600
Δ = 7° 00' 00" (RT)
R = 112.533 m
T = 68.045 m
L = 135.920 m
E = 2.079 m
e = N.C. 2.0%

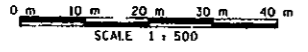
PROP. CURVE #13
PI STA = 7+066.733
Δ = 87° 41' 07" (RT)
R = 44.000 m
T = 42.258 m
L = 67.338 m
E = 17.006 m
e = 3.0%

PROP. CURVE #14
PI STA = 7+117.011
Δ = 42° 17' 13" (LT)
R = 44.000 m
T = 17.017 m
L = 32.473 m
E = 3.474 m
e = N.C.

T.R. = N.A.
S.E. RUN. = N.A.
P.C. STA = 6+888.555
P.T. STA = 7+024.475

T.R. = N.A.
S.E. RUN. = 7.5 m
P.C. STA = 7+024.475
P.T. STA = 7+091.813

T.R. = N.A.
S.E. RUN. = N.A.
P.C. STA = 7+099.994
P.T. STA = 7+132.468



W 1/2, NE 1/4, SEC. 17 T. 23 N, R. 2 E, 3RD P.M.

NOTE:
BEARINGS AND GRID DISTANCES
BASED ON STATE PLANE
COORDINATES NAD 83, EAST ZONE, R
GRID FACTOR = 1.00001605
1 METER = 3.28083333 FEET.