

SE 1/4 SEC. 8 T. 23 N, R. 2 E, 3RD P.M.

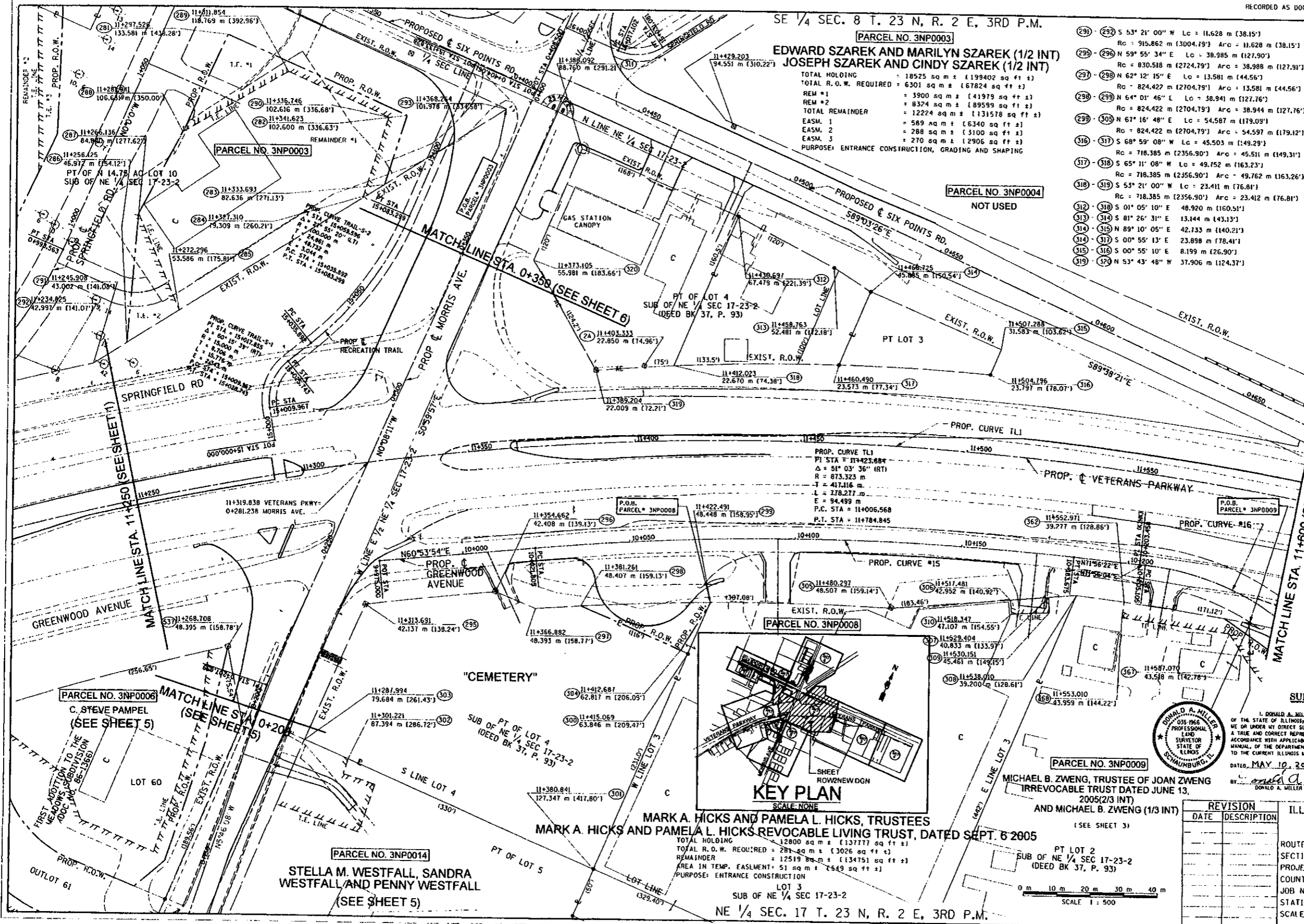
EDWARD SZAREK AND MARILYN SZAREK (1/2 INT)
JOSEPH SZAREK AND CINDY SZAREK (1/2 INT)

PARCEL NO. 3NP0003
TOTAL HOLDING = 18525 sq m ± (199402 sq ft ±)
TOTAL R.O.W. REQUIRED = 6301 sq m ± (67824 sq ft ±)
REM #1 = 3900 sq m ± (41979 sq ft ±)
REM #2 = 8324 sq m ± (89599 sq ft ±)
TOTAL REMAINDER = 12224 sq m ± (131578 sq ft ±)
EASM. 1 = 589 sq m ± (6340 sq ft ±)
EASM. 2 = 288 sq m ± (3100 sq ft ±)
EASM. 3 = 270 sq m ± (2906 sq ft ±)
PURPOSE: ENTRANCE CONSTRUCTION, GRADING AND SHAPING

- (291) - (292) S 53° 21' 00" W Lc = 11,628 m (38,15')
- Rc = 915,862 m (3004,19') Arc = 11,628 m (38,15')
- (293) - (296) N 59° 55' 34" E Lc = 38,985 m (127,90')
- Rc = 830,518 m (2724,79') Arc = 38,988 m (127,91')
- (297) - (298) N 62° 12' 15" E Lc = 13,581 m (44,56')
- Rc = 824,422 m (2704,79') Arc = 13,581 m (44,56')
- (299) - (299) N 64° 01' 46" E Lc = 38,941 m (127,76')
- Rc = 824,422 m (2704,79') Arc = 38,944 m (127,76')
- (300) - (305) N 67° 16' 48" E Lc = 54,587 m (179,09')
- Rc = 824,422 m (2704,79') Arc = 54,597 m (179,12')
- (306) - (317) S 68° 59' 08" W Lc = 45,503 m (149,29')
- Rc = 718,385 m (2356,90') Arc = 45,511 m (149,31')
- (318) - (318) S 65° 11' 08" W Lc = 49,752 m (163,23')
- Rc = 718,385 m (2356,90') Arc = 49,762 m (163,26')
- (319) - (319) S 53° 21' 00" W Lc = 23,411 m (76,81')
- Rc = 718,385 m (2356,90') Arc = 23,412 m (76,81')
- (320) - (320) S 01° 05' 10" E Lc = 48,920 m (160,51')
- (321) - (321) S 81° 26' 31" E Lc = 13,144 m (43,13')
- (322) - (322) N 89° 10' 05" E Lc = 42,733 m (140,21')
- (323) - (323) S 00° 55' 13" E Lc = 23,898 m (78,41')
- (324) - (324) S 00° 55' 10" E Lc = 8,199 m (26,90')
- (325) - (325) N 53° 43' 48" W Lc = 37,906 m (124,37')

- (281) - (282) S 89° 41' 01" E Lc = 58,863 m (193,13')
- (283) - (283) S 00° 00' 00" W Lc = 32,216 m (105,70')
- (284) - (284) S 06° 31' 30" E Lc = 21,806 m (71,54')
- (285) - (285) S 33° 47' 35" W Lc = 7,728 m (25,35')
- (286) - (286) S 33° 47' 35" E Lc = 42,837 m (140,54')
- (287) - (287) S 33° 47' 35" W Lc = 64,532 m (211,71')
- (288) - (288) N 06° 31' 37" W Lc = 25,529 m (83,74')
- (289) - (289) S 33° 47' 35" W Lc = 18,336 m (60,14')
- (290) - (290) N 46° 49' 33" W Lc = 31,738 m (104,10')
- (291) - (291) S 19° 18' 29" W Lc = 39,156 m (128,45')
- (292) - (292) S 33° 47' 35" W Lc = 11,454 m (37,57')
- (293) - (293) N 04° 03' 49" E Lc = 28,181 m (92,45')
- (294) - (294) S 35° 54' 40" E Lc = 36,235 m (118,85')
- (295) - (295) S 89° 41' 05" E Lc = 32,887 m (107,89')
- (296) - (296) S 00° 10' 27" E Lc = 44,508 m (146,02')
- (297) - (297) N 88° 35' 39" E Lc = 13,040 m (42,77')
- (298) - (298) N 89° 44' 11" E Lc = 32,761 m (107,48')
- (299) - (299) S 07° 34' 26" W Lc = 17,051 m (55,94')
- (300) - (300) S 00° 38' 38" E Lc = 70,426 m (231,05')
- (301) - (301) S 89° 44' 03" W Lc = 2,437 m (8,00')
- (302) - (302) S 89° 44' 08" W Lc = 80,411 m (263,80')
- (303) - (303) S 89° 44' 08" W Lc = 14,231 m (46,69')
- (304) - (304) N 61° 22' 21" E Lc = 35,670 m (117,03')
- (305) - (305) N 61° 22' 21" E Lc = 11,547 m (37,88')
- (306) - (306) S 26° 35' 29" E Lc = 4,235 m (13,89')
- (307) - (307) N 61° 22' 21" E Lc = 8,372 m (27,47')
- (308) - (308) S 26° 21' 26" E Lc = 4,683 m (15,36')
- (309) - (309) S 63° 37' 40" W Lc = 11,299 m (37,07')
- (310) - (310) N 89° 05' 20" E Lc = 51,055 m (167,51')
- (311) - (311) S 01° 05' 10" E Lc = 36,576 m (120,00')
- (312) - (312) S 86° 11' 06" E Lc = 32,776 m (107,54')

PARCEL NO. 3NP0004
NOT USED



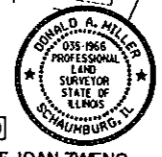
LEGEND

- SECTION CORNER
- FOUND IRON ROD OR PIPE
- FOUND RIGHT OF WAY MARKER
- ACCESS CONTROL
- RECORD DATA
- ENGLISH EQUIVALENT
- EXISTING TREE / DIAMETER (INCHES)

NOTES:
BEARINGS AND GRID DISTANCES BASED ON STATE PLANE COORDINATES NAD 83, EAST ZONE. GRID FACTOR = 1.00001605. 1 METER = 3.28083333 FEET.

PROF. CURVE #15
PI STA = 10+102.992
Δ = 11° 02' 28" (RT.)
R = 840,000 m
T = 81,186 m
L = 161,870 m
E = 3,914 m
o = N.C.
T.R. = N.A.
S.E. RUN. = N.A.
P.C. STA = 10+021.805
P.T. STA = 10+183.675

PROF. CURVE #16
PI STA = 10+229.362
Δ = 34° 02' 16" (RT.)
R = 79,248 m
T = 24,257 m
L = 47,079 m
E = 3,629 m
o = N.C.
T.R. = N.A.
S.E. RUN. = N.A.
P.C. STA = 10+205.105
P.T. STA = 10+252.184



SURVEYOR'S STATEMENT
I, DONALD A. MILLER, HEREBY STATE THAT I AM A PROFESSIONAL LAND SURVEYOR OF THE STATE OF ILLINOIS; THAT THE SURVEY OF PROPOSED FAP ROUTE 104 WAS MADE BY ME OR UNDER MY DIRECT SUPERVISION; THAT THE LAND CORNER TIES AS SHOWN HEREON, ARE A TRUE AND CORRECT REPRESENTATION OF SAID SURVEY; AND THAT THE PLAN HEREON IS IN ACCORDANCE WITH APPLICABLE SECTIONS OF THE LAND ACQUISITION POLICIES AND PROCEDURES MANUAL OF THE DEPARTMENT'S DISTRICT POLICIES. THIS PROFESSIONAL SERVICE CONFORMS TO THE CURRENT ILLINOIS MINIMUM STANDARDS FOR A BOUNDARY SURVEY.
DATED: MAY 10, 2007
DONALD A. MILLER
ILLINOIS PROFESSIONAL LAND SURVEYOR NO. 035-1966
LICENSE EXPIRES DATE 11-30-08



MARK A. HICKS AND PAMELA L. HICKS, TRUSTEES
MARK A. HICKS AND PAMELA L. HICKS REVOCABLE LIVING TRUST, DATED SEPT. 6 2005

PARCEL NO. 3NP0008
TOTAL HOLDING = 12800 sq m ± (137777 sq ft ±)
TOTAL R.O.W. REQUIRED = 2871 sq m ± (3026 sq ft ±)
REMAINDER = 12519 sq m ± (134751 sq ft ±)
AREA IN TEMP. EASMENT = 51 sq m ± (549 sq ft ±)
PURPOSE: ENTRANCE CONSTRUCTION

PARCEL NO. 3NP0009
MICHAEL B. ZWENG, TRUSTEE OF JOAN ZWENG
IRREVOCABLE TRUST DATED JUNE 13, 2005 (2/3 INT)
AND MICHAEL B. ZWENG (1/3 INT)
(SEE SHEET 3)

PARCEL NO. 3NP0014
STELLA M. WESTFALL, SANDRA WESTFALL AND PENNY WESTFALL
(SEE SHEET 5)

REVISION	DATE	DESCRIPTION

ILLINOIS DEPT. OF TRANSPORTATION
RIGHT OF WAY PLANS
ROUTE EAP 704 (I-55 BL. VETERAN'S PARKWAY)
SECTION W.N. & IS-1
PROJECT
COUNTY McLEAN
JOB NUMBER R-93-005-98
STATION 11+250 TO 11+600
SCALE 1:500 SHEET 2 OF 8

