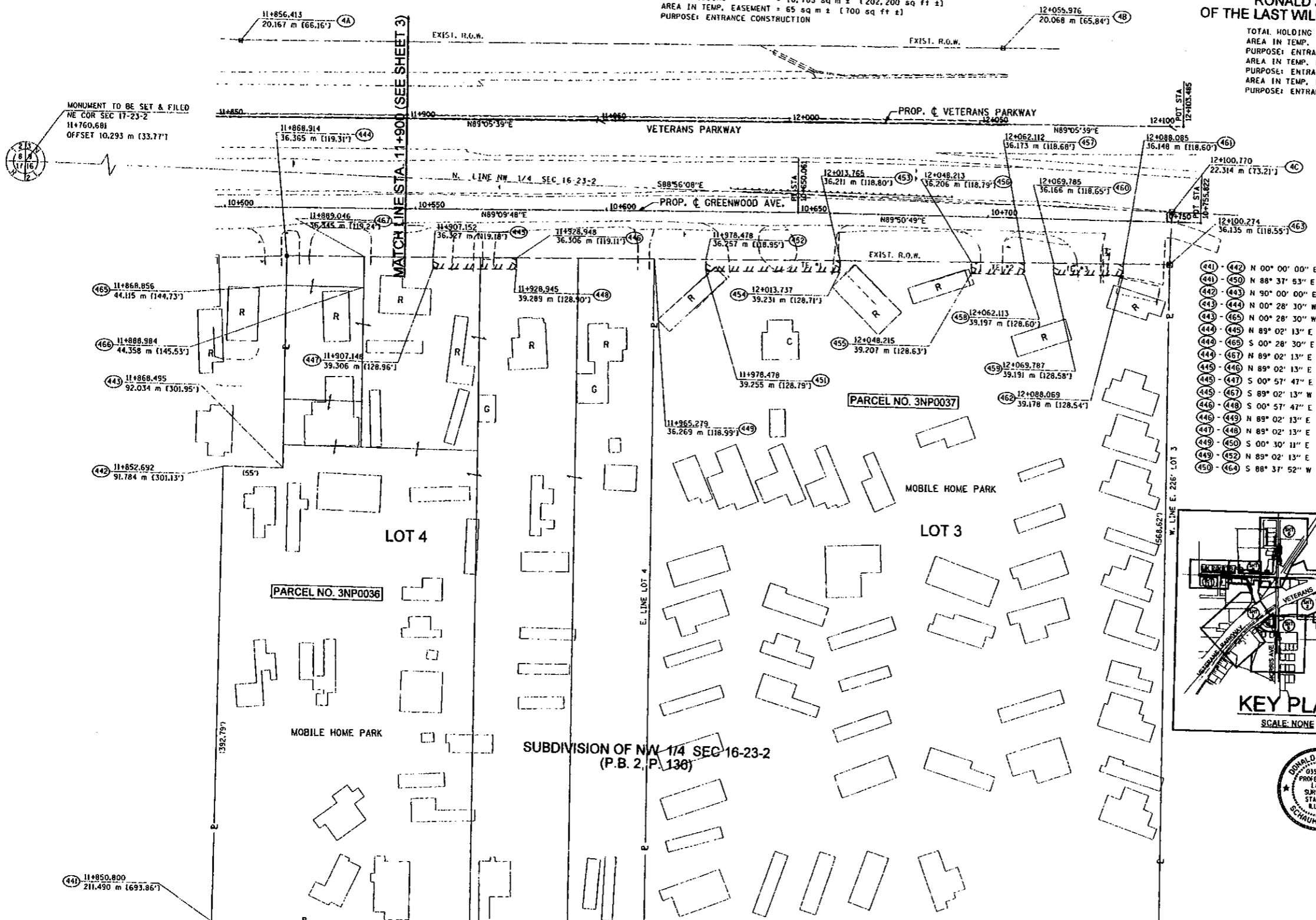
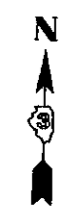
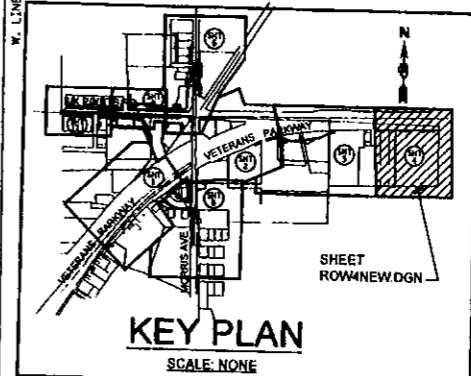


PARCEL NO. 3NP0036
RONALD JONES, AS EX. AND TRUSTEE
OF THE LAST WILL AND TESTAMENT OF J. R. McCARTY
 TOTAL HOLDING = 18,785 sq m ± (202,200 sq ft ±)
 AREA IN TEMP. EASEMENT = 65 sq m ± (700 sq ft ±)
 PURPOSE: ENTRANCE CONSTRUCTION

PARCEL NO. 3NP0037
RONALD JONES, AS EX. AND TRUSTEE
OF THE LAST WILL AND TESTAMENT OF J. R. McCARTY
 TOTAL HOLDING = 23,468 sq m ± (252,605 sq ft ±)
 AREA IN TEMP. EASEMENT 1 = 106 sq m ± (1141 sq ft ±)
 PURPOSE: ENTRANCE CONSTRUCTION
 AREA IN TEMP. EASEMENT 2 = 42 sq m ± (452 sq ft ±)
 PURPOSE: ENTRANCE CONSTRUCTION
 AREA IN TEMP. EASEMENT 3 = 55 sq m ± (591 sq ft ±)
 PURPOSE: ENTRANCE CONSTRUCTION



(441) - (442) N 00° 00' 00" E 119.721 m (392.79')	(451) - (452) N 00° 51' 47" W 2.998 m (9.84')
(442) - (443) N 88° 37' 53" E 113.257 m (371.58')	(451) - (453) N 89° 03' 15" E 35.259 m (118.96')
(443) - (444) N 90° 00' 00" E 15.805 m (51.85')	(452) - (453) N 89° 02' 13" E 35.286 m (119.05')
(443) - (445) N 00° 28' 30" W 55.670 m (182.64')	(453) - (454) S 00° 22' 55" E 3.020 m (9.88')
(443) - (446) N 00° 28' 30" W 47.921 m (157.22')	(453) - (456) N 89° 02' 13" E 34.449 m (109.74')
(444) - (445) N 89° 02' 13" E 38.238 m (125.45')	(454) - (456) N 00° 56' 09" W 3.000 m (9.84')
(444) - (446) S 00° 28' 30" E 7.749 m (25.42')	(454) - (458) N 89° 03' 16" E 13.899 m (45.60')
(444) - (447) N 89° 02' 13" E 20.132 m (66.05')	(454) - (457) N 89° 02' 13" E 13.898 m (45.60')
(445) - (446) N 89° 02' 13" E 21.796 m (71.51')	(455) - (460) N 00° 57' 47" W 3.023 m (9.92')
(445) - (447) S 00° 57' 47" E 2.978 m (9.77')	(457) - (460) N 89° 02' 13" E 7.673 m (25.17')
(445) - (447) S 89° 02' 13" W 18.106 m (59.40')	(459) - (460) N 00° 57' 47" W 3.026 m (9.93')
(446) - (448) S 00° 57' 47" E 2.984 m (9.79')	(459) - (462) N 89° 03' 12" E 18.281 m (59.98')
(446) - (449) N 89° 02' 13" E 36.331 m (119.20')	(460) - (461) N 89° 02' 13" E 18.301 m (60.04')
(447) - (448) N 89° 02' 13" E 21.796 m (71.51')	(461) - (462) S 00° 35' 31" W 3.032 m (9.95')
(447) - (450) S 00° 30' 11" E 174.305 m (571.86')	(461) - (463) N 89° 02' 13" E 12.189 m (39.99')
(449) - (452) N 89° 02' 13" E 13.199 m (43.30')	(463) - (464) S 00° 30' 46" E 173.320 m (568.63')
(450) - (464) S 88° 37' 52" W 135.036 m (443.03')	(465) - (466) N 89° 47' 09" E 20.132 m (66.05')
	(466) - (467) N 00° 28' 30" W 8.013 m (26.29')



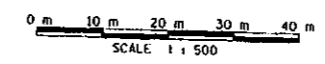
- LEGEND**
- SECTION CORNER
 - FOUND IRON ROD OR PIPE
 - FOUND RIGHT OF WAY MARKER
 - ACCESS CONTROL
 - RECORD DATA
 - ENGLISH EQUIVALENT
 - EXISTING TREE/DIAMETER (INCHES)

NOTE:
 BEARINGS AND GRID DISTANCES
 BASED ON STATE PLANE
 COORDINATES NAD 83, EAST ZONE.
 GRID FACTOR = 1.00001605
 1 METER = 3.28083333 FEET.



SURVEYOR'S STATEMENT
 I, DONALD A. MILLER, HEREBY STATE THAT I AM A PROFESSIONAL LAND SURVEYOR OF THE STATE OF ILLINOIS THAT THE SURVEY OF PROPOSED EAP ROUTE FOR WAS MADE BY ME OR UNDER MY DIRECT SUPERVISION THAT THE LAND CORNER TIES AS SHOWN HEREON, ARE A TRUE AND CORRECT REPRESENTATION OF THE LAND CORNER TIES AS SHOWN HEREON, ARE ACCORDANCE WITH APPLICABLE SECTIONS OF THE LAND ACQUISITION POLICIES AND PROCEDURES IN MANUAL OF THE DEPARTMENT'S DISTRICT POLICIES. THIS PROFESSIONAL SERVICE CONFORMS TO THE CURRENT ILLINOIS MINIMUM STANDARDS FOR A BOUNDARY SURVEY.
 DATED: MAY 10, 2007
 BY: *Donald A. Miller*
 DONALD A. MILLER ILLINOIS PROFESSIONAL LAND SURVEYOR NO. 035-1966
 LICENSE EXPIRES DATE 11-30-08

ILLINOIS DEPT. OF TRANSPORTATION
RIGHT OF WAY PLANS
 ROUTE: EAP 704 (I-55 BL: VETERAN'S PARKWAY)
 SECTION: (11 N. & TS-1)
 PROJECT: _____
 COUNTY: McLEAN
 JOB NUMBER: R-93-005-98
 STATION: 11+900 TO 12+103.485
 SCALE: 1:500 SHEET 4 OF 8



NW 1/4 SEC. 16 T. 23 N, R. 2 E, 3RD P.M.