

F.A.P. RTE.	SECTION	COUNTY	TOTAL SHEETS	SHEET NO.
704	(1)N & TS-1	McLean	497	254
STA.	TO STA.			
FED. ROAD DIST. NO.	ILLINOIS	FED. AID PROJECT		

CONTRACT NO. 70514

**LEFT ON GREEN
ARROW ONLY**

R10-5
4 REQUIRED
0.6mX0.75m
SIGN PANEL TYPE 1



PROPOSED TRAFFIC SIGNAL LEGEND

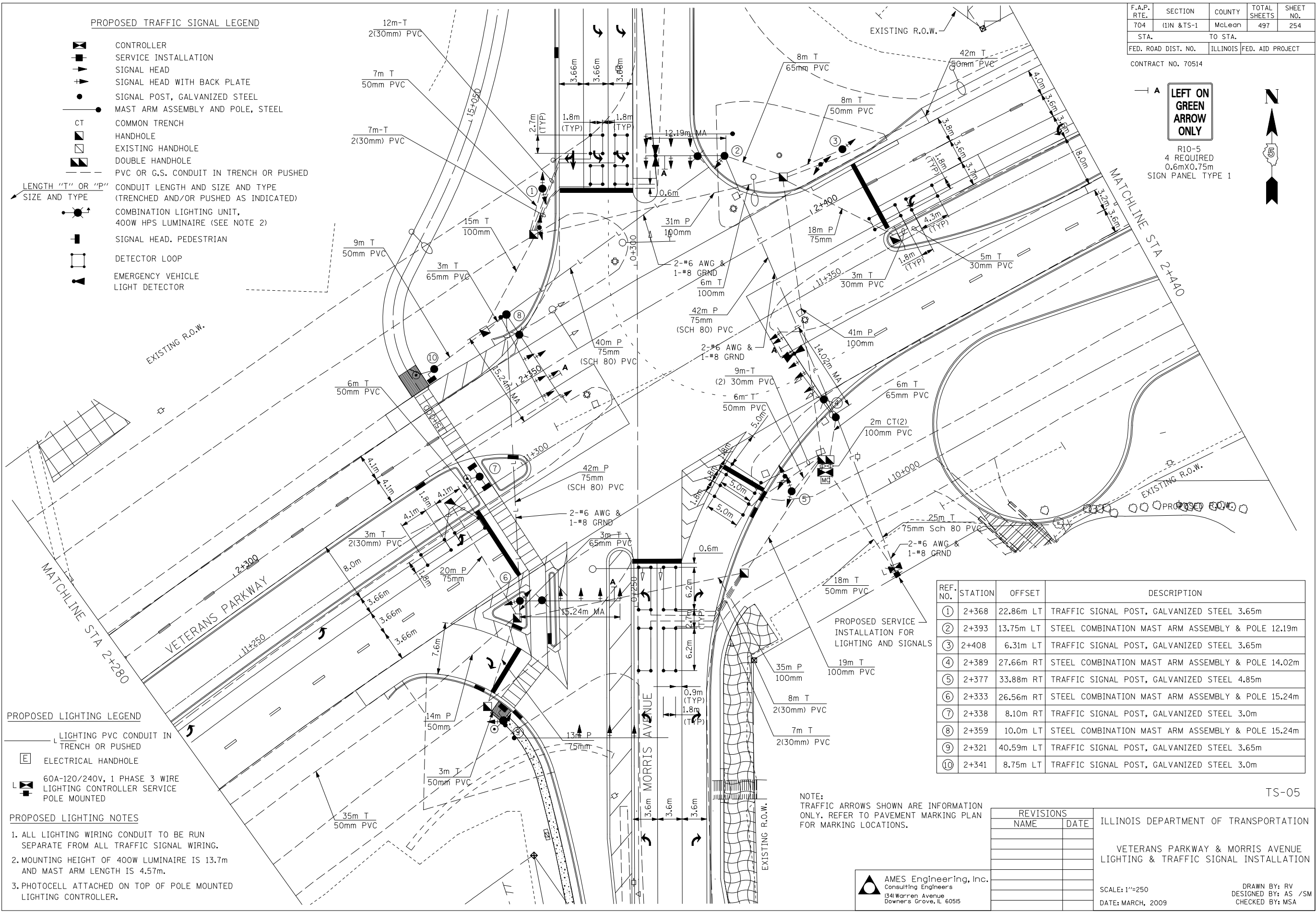
- CONTROLLER
- SERVICE INSTALLATION
- SIGNAL HEAD
- SIGNAL HEAD WITH BACK PLATE
- SIGNAL POST, GALVANIZED STEEL
- MAST ARM ASSEMBLY AND POLE, STEEL
- COMMON TRENCH
- HANDHOLE
- EXISTING HANDHOLE
- DOUBLE HANDHOLE
- PVC OR G.S. CONDUIT IN TRENCH OR PUSHED
- LENGTH "T" OR "P" SIZE AND TYPE
- COMBINATION LIGHTING UNIT, 400W HPS LUMINAIRE (SEE NOTE 2)
- SIGNAL HEAD, PEDESTRIAN
- DETECTOR LOOP
- EMERGENCY VEHICLE LIGHT DETECTOR

PROPOSED LIGHTING LEGEND

- LIGHTING PVC CONDUIT IN TRENCH OR PUSHED
- ELECTRICAL HANDHOLE
- 60A-120/240V, 1 PHASE 3 WIRE LIGHTING CONTROLLER SERVICE POLE MOUNTED

PROPOSED LIGHTING NOTES

1. ALL LIGHTING WIRING CONDUIT TO BE RUN SEPARATE FROM ALL TRAFFIC SIGNAL WIRING.
2. MOUNTING HEIGHT OF 400W LUMINAIRE IS 13.7m AND MAST ARM LENGTH IS 4.57m.
3. PHOTOCELL ATTACHED ON TOP OF POLE MOUNTED LIGHTING CONTROLLER.



REF. NO.	STATION	OFFSET	DESCRIPTION
①	2+368	22.86m LT	TRAFFIC SIGNAL POST, GALVANIZED STEEL 3.65m
②	2+393	13.75m LT	STEEL COMBINATION MAST ARM ASSEMBLY & POLE 12.19m
③	2+408	6.31m LT	TRAFFIC SIGNAL POST, GALVANIZED STEEL 3.65m
④	2+389	27.66m RT	STEEL COMBINATION MAST ARM ASSEMBLY & POLE 14.02m
⑤	2+377	33.88m RT	TRAFFIC SIGNAL POST, GALVANIZED STEEL 4.85m
⑥	2+333	26.56m RT	STEEL COMBINATION MAST ARM ASSEMBLY & POLE 15.24m
⑦	2+338	8.10m RT	TRAFFIC SIGNAL POST, GALVANIZED STEEL 3.0m
⑧	2+359	10.0m LT	STEEL COMBINATION MAST ARM ASSEMBLY & POLE 15.24m
⑨	2+321	40.59m LT	TRAFFIC SIGNAL POST, GALVANIZED STEEL 3.65m
⑩	2+341	8.75m LT	TRAFFIC SIGNAL POST, GALVANIZED STEEL 3.0m

NOTE:
TRAFFIC ARROWS SHOWN ARE INFORMATION ONLY. REFER TO PAVEMENT MARKING PLAN FOR MARKING LOCATIONS.

REVISIONS	
NAME	DATE

ILLINOIS DEPARTMENT OF TRANSPORTATION
VETERANS PARKWAY & MORRIS AVENUE
LIGHTING & TRAFFIC SIGNAL INSTALLATION

SCALE: 1"=250
DATE: MARCH, 2009

DRAWN BY: RV
DESIGNED BY: AS /SM
CHECKED BY: MSA

AMES Engineering, Inc.
Consulting Engineers
1341 Warren Avenue
Downers Grove, IL 60515

\$FILES 10/14/2010 \$TIMES