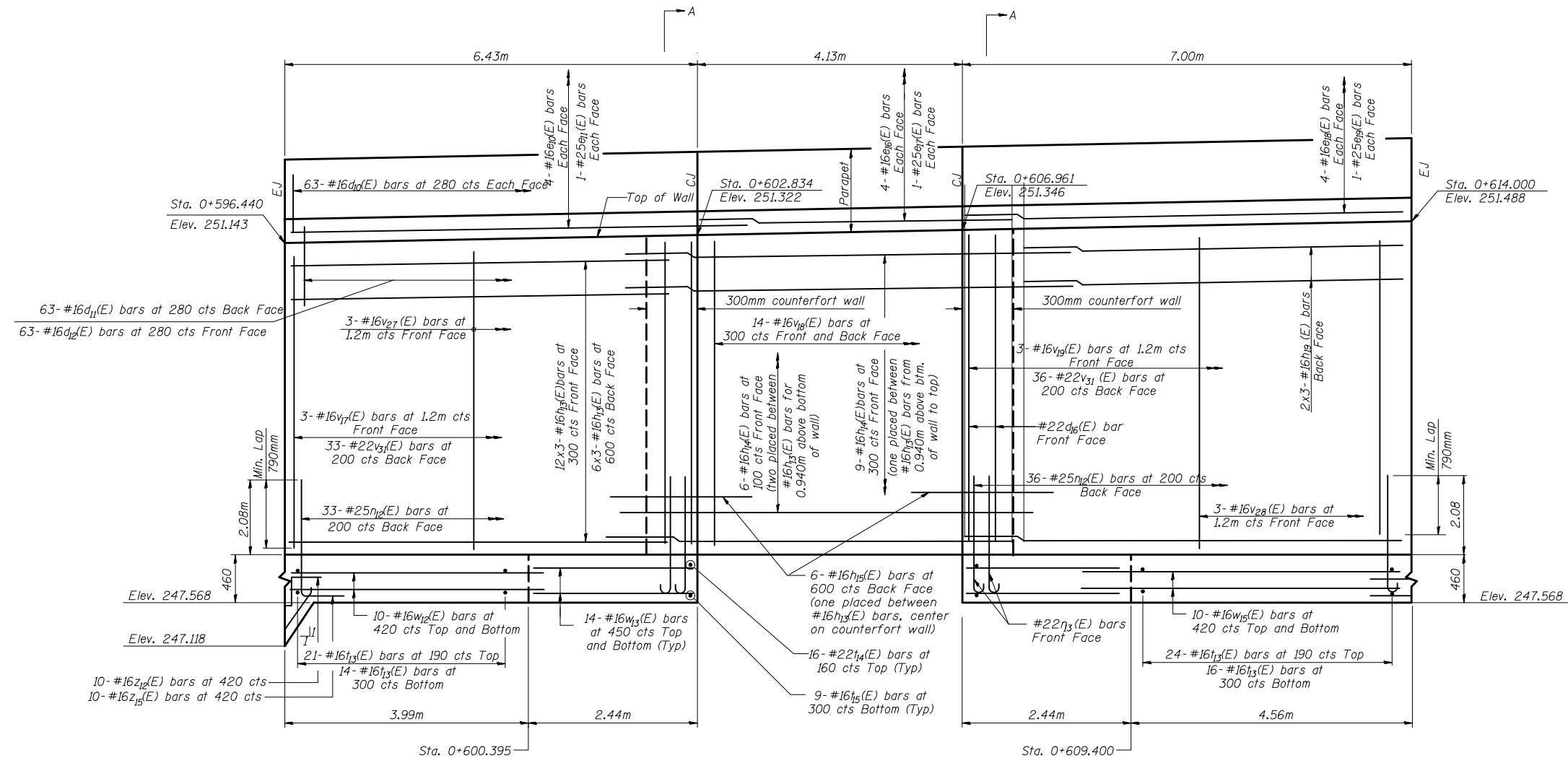


STATE OF ILLINOIS
DEPARTMENT OF TRANSPORTATION

ROUTE NO.	SECTION	COUNTY	POST MILE	SHEET	SHEET NO. 4
P.A.P. 704	CDI	McLEAN	497	273	11 SHEETS
FED. ROAD DIST. NO.	B.L.L.M.S.	FED. AID PROJECT	CONTRACT NO. 70514		



NOTE: CJ and EJ denote Construction Joint and Expansion Joint respectively

STATION 0+596.440 TO 0+614.000



DESIGNED	JDA
CHECKED	WCT
DRAWN	MAC
CHECKED	WCT

DATE: 06-25-10

ELEVATION
RETAINING WALL ALONG SIX POINTS ROAD
F.A.P. ROUTE 704 SECTION (1) N&TS-1
McLEAN COUNTY
STATION 0+545.000 TO 0+635.000
STRUCTURE NO. 057-W001