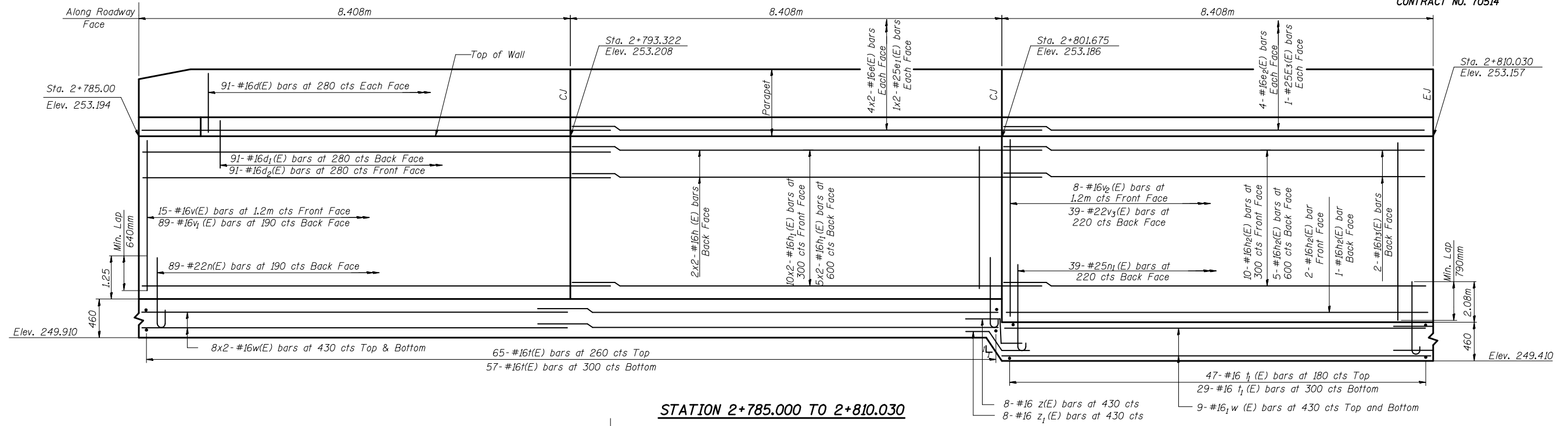


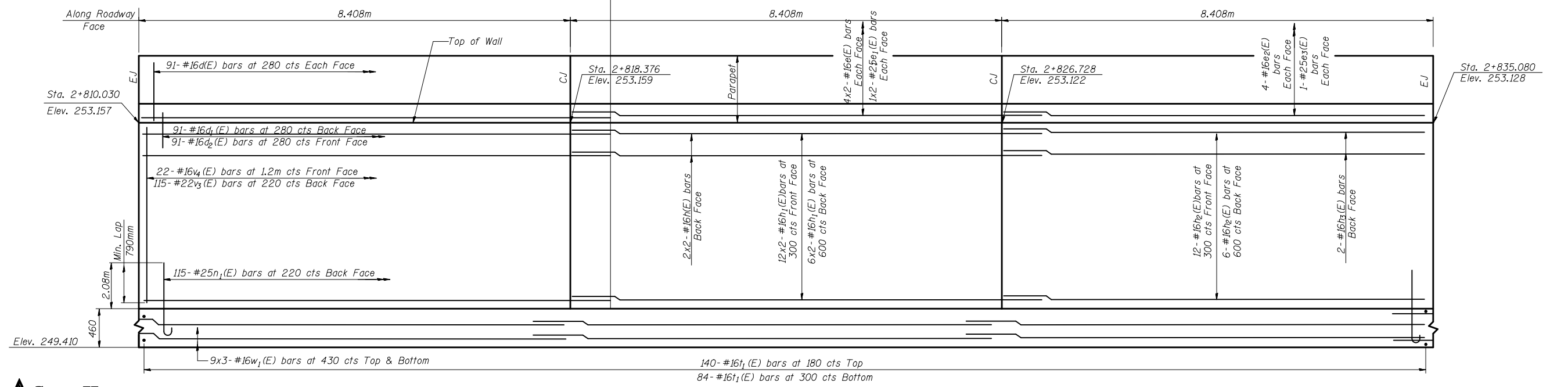
STATE OF ILLINOIS
DEPARTMENT OF TRANSPORTATION

ROUTE NO.	SECTION	COUNTY	DATE	SHEET	SHEET NO. 2 7 SHEETS
F.A.P. 704	CDI	McLEAN	497	282	
FED. ROAD DIST. NO.		ILLINOIS PROJECT			

CONTRACT NO. 70514



STATION 2+785.000 TO 2+810.030



STATION 2+810.030 TO 2+835.080



DESIGNED	Jda
CHECKED	WCT
DRAWN	mac
CHECKED	WCT

NOTE: CJ and EJ denote Construction Joint and Expansion Joint respectively

DATE: 06-25-10

ELEVATION
RETAINING WALL ALONG
W.B.L. VETERANS PARKWAY
F.A.P. ROUTE 704 SECTION (1) N&TS-1
McLEAN COUNTY
STATION 2+785.000 TO 2+877.000
STRUCTURE NO. 057-W002