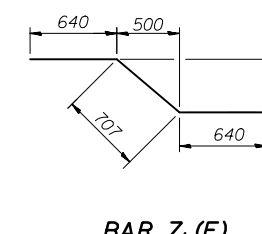
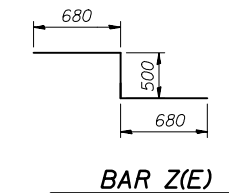
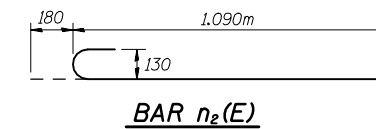
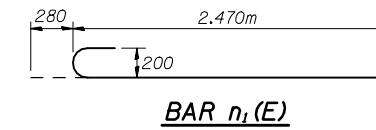
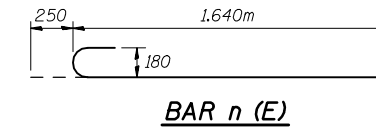
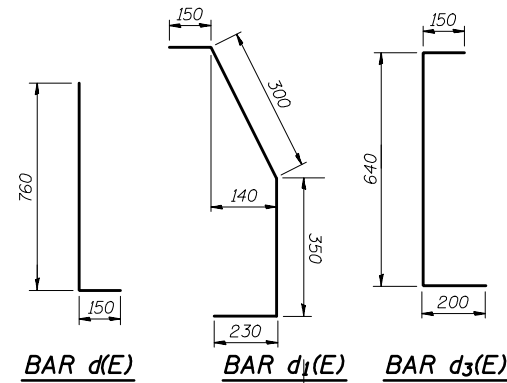


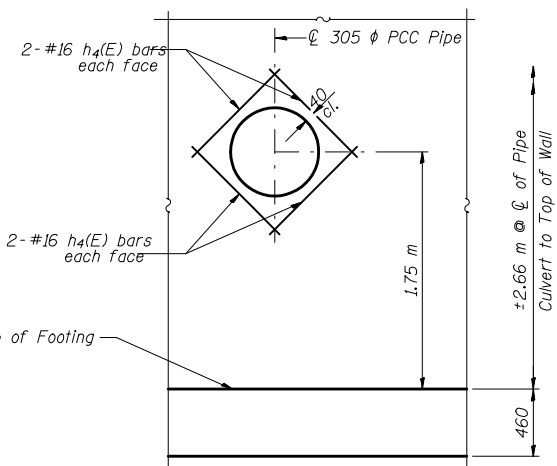
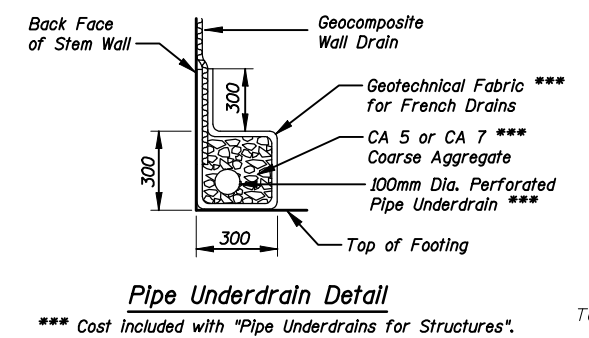
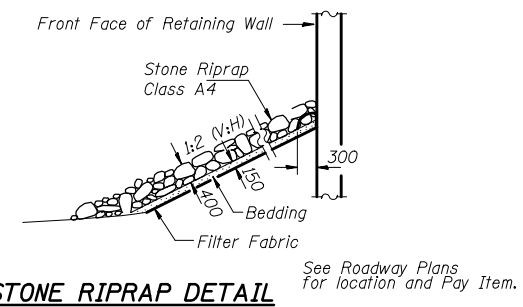
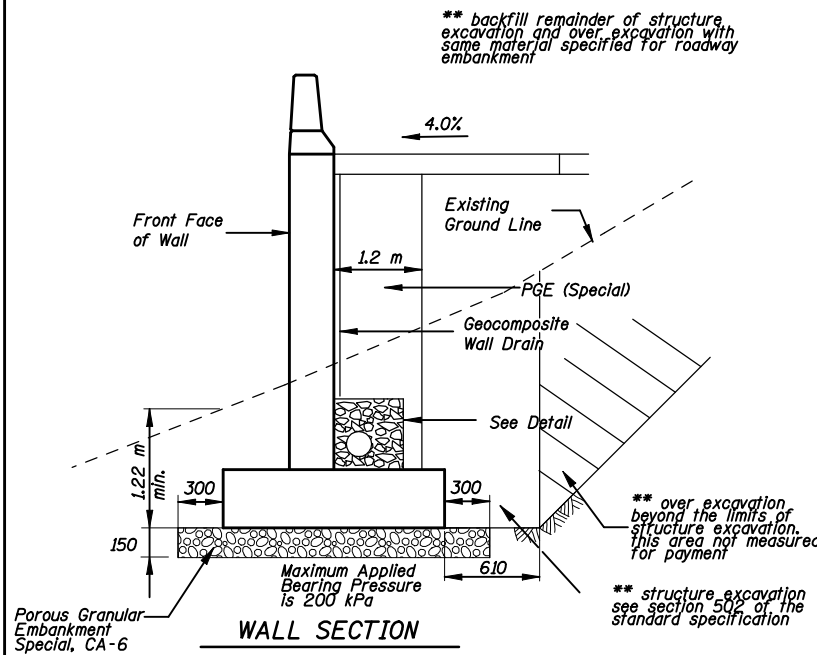
STATE OF ILLINOIS
DEPARTMENT OF TRANSPORTATION

ROUTE NO.	SECTION	COUNTY	STATION	SHEET	SHEET NO. 5 7 SHEETS
F.A.P. 704	CDI	McLEAN	497	285	
FED. ROAD DIST. NO.	ILLINOIS	FED. AID PROJECT	CONTRACT NO. 70514		



BILL OF MATERIAL

Bar	No.	Size	Length	Shape
d(E)	668	#16	0.910m	┌
d ₁ (E)	334	#16	1.030m	┌
d ₃ (E)	334	#16	0.990m	┌
e(E)	56	#16	9.050m	—
e ₁ (E)	14	#25	9.730m	—
e ₂ (E)	32	#16	8.330m	—
e ₃ (E)	8	#25	8.330m	—
h(E)	14	#16	9.050m	—
h ₁ (E)	117	#16	9.050m	—
h ₂ (E)	68	#16	8.330m	—
h ₃ (E)	8	#16	8.330m	—
h ₄ (E)	8	#16	0.790m	—
n(E)	134	#22	1.890m	┐
n ₁ (E)	269	#25	2.750m	┐
n ₂ (E)	45	#16	1.270m	┐
t(E)	122	#16	2.98m	—
t ₁ (E)	524	#16	3.43m	—
t ₂ (E)	63	#16	3.00m	—
t ₃ (E)	60	#16	2.50m	—
v(E)	15	#16	2.780m	—
v ₁ (E)	89	#16	2.340m	—
v ₂ (E)	15	#16	3.240m	—
v ₃ (E)	269	#22	2.560m	—
v ₄ (E)	30	#16	3.210m	—
v ₅ (E)	7	#16	3.290m	—
v ₆ (E)	8	#16	2.820m	—
v ₇ (E)	45	#16	2.370m	—
v ₈ (E)	53	#16	2.320m	—
w(E)	32	#16	8.690m	—
w ₁ (E)	126	#16	8.950m	—
w ₂ (E)	30	#16	8.330m	—
z(E)	23	#16	1.860m	┐
z ₁ (E)	23	#16	1.990m	┐
Concrete Structures			m ³	259
Reinforcement Bars, Epoxy Coated			kg	20,350



MIN. BAR LAP

#16	640mm
#25	1.320m

Bars indicated thus 12 x 4-#15 etc. indicates 12 lines of bars with 4 lengths per line.

Reinforcement bars designated (E) shall be epoxy coated. All construction joints shall be bonded.



DESIGNED	Jda
CHECKED	WCT
DRAWN	mac
CHECKED	WCT

DATE: 06-25-10

DETAILS
RETAINING WALL ALONG
W.B.L. VETERANS PARKWAY
F.A.P. ROUTE 704 SECTION (1) N&TS-1
McLEAN COUNTY
STATION 2+785.000 TO 2+877.000
STRUCTURE NO. 057-W002