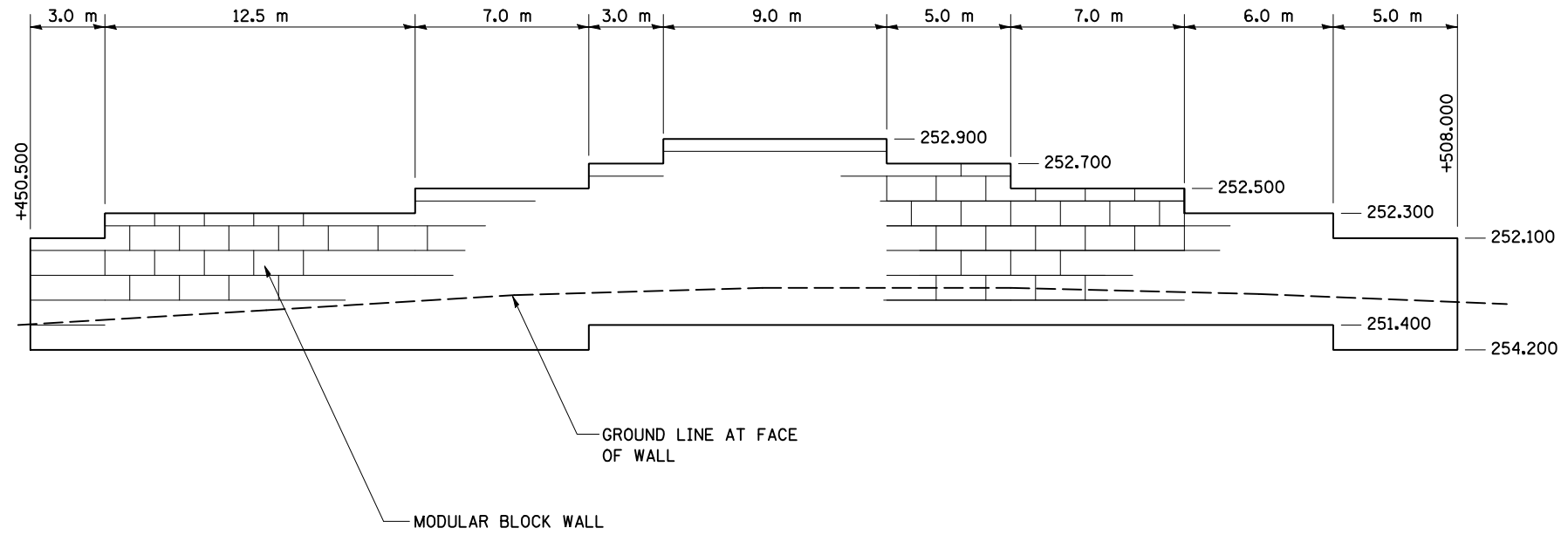
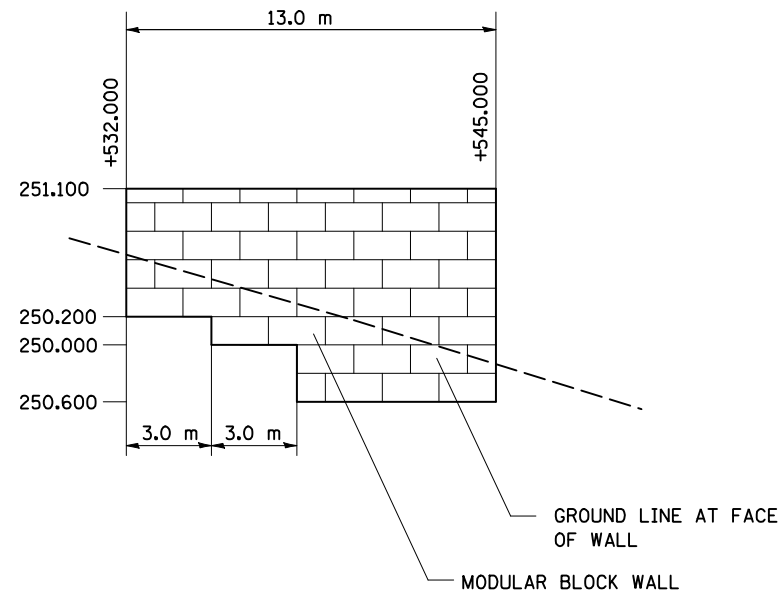


F.A.P. RTE.	SECTION	COUNTY	TOTAL SHEETS	SHEET NO.
704	(1)N & TS-1	McLEAN	497	310A
STA. N/A		TO STA. N/A		
FED. ROAD DIST. NO.		ILLINOIS FED. AID PROJECT		
CONTRACT NO. 70514				



MODULAR BLOCK WALL ELEVATION
 NOT TO SCALE
 SIX POINTS ROAD STA. 0+450.500 TO 0+508.000, LT.

- NOTES:**
- ELEVATIONS ARE FOR PURPOSES OF SHOWING GENERAL LAYOUT AND QUANTITY COMPUTATION. CONTRACTOR TO SUBMIT MANUFACTURER'S SHOP DRAWINGS SIGNED BY AN ILLINOIS LICENSED STRUCTURAL ENGINEER.



MODULAR BLOCK WALL ELEVATION
 NOT TO SCALE
 SIX POINTS ROAD STA. 0+532.000 TO 0+545.000, LT.

REVISIONS		ILLINOIS DEPARTMENT OF TRANSPORTATION
NAME	DATE	
		SPECIAL DETAILS
DATE 05-27-09		DRAWN BY PMH CHECKED BY PMH

PLOT DATE = 6/2/2010
 FILE NAME = c:\pwworkspace\craig\ib217231\specialdetails 6.rvt
 PLOT SCALE = 1:35000 m / in.
 USER NAME = craig