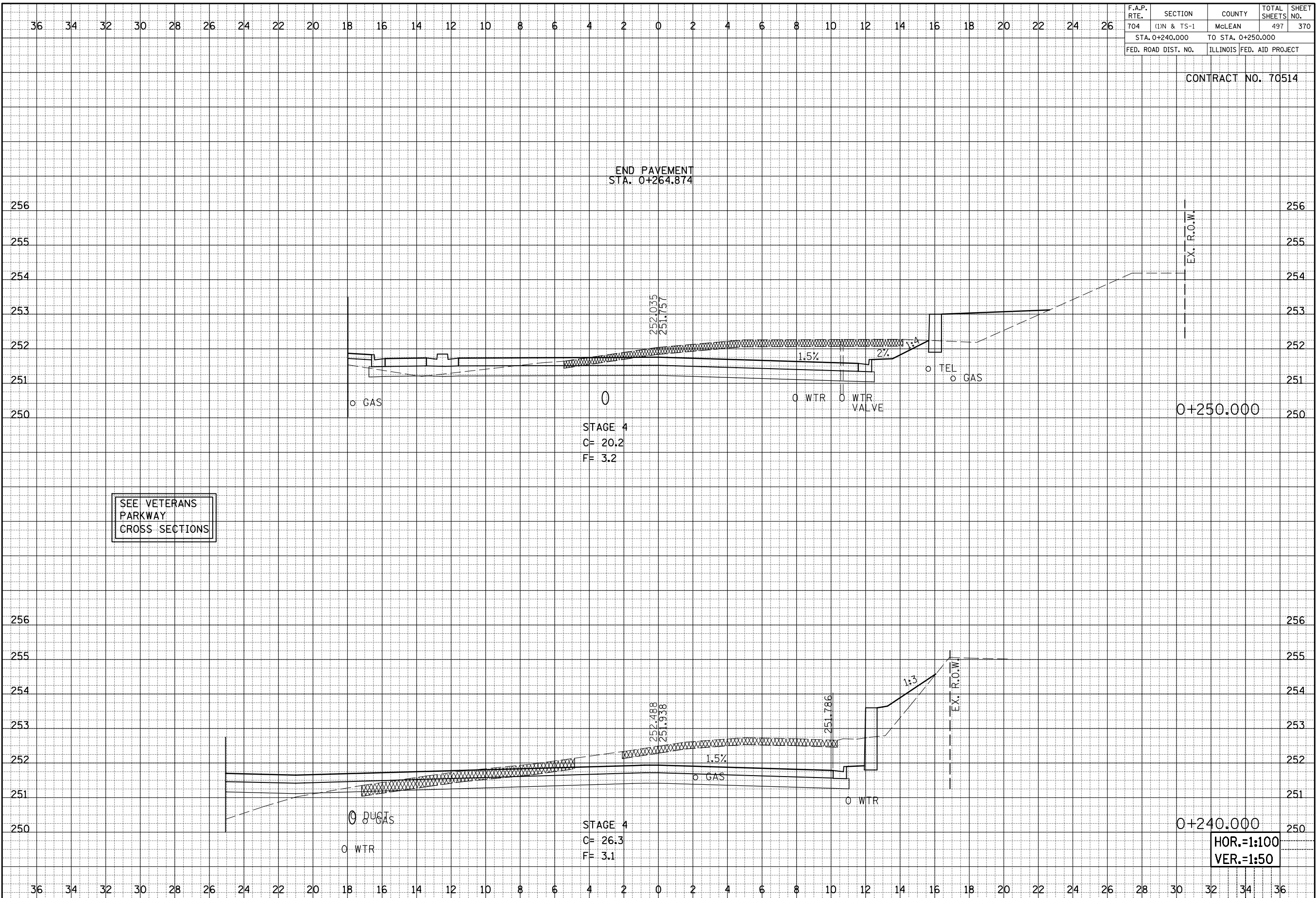


F.A.P. RTE.	SECTION	COUNTY	TOTAL SHEETS	SHEET NO.
704	(1)N & TS-1	MCLEAN	497	370
STA. 0+240.000		TO STA. 0+250.000		
FED. ROAD DIST. NO.	ILLINOIS FED. AID PROJECT			

CONTRACT NO. 70514

BY	DATE
ORIGINAL SURVEY	SURVEYED
NOTE BOOK NO.	PLOTTED
	AREAS
	CHECKED



BY	DATE
ORIGINAL SURVEY	SURVEYED
NOTE BOOK NO.	PLOTTED
	AREAS
	CHECKED

SEE VETERANS PARKWAY CROSS SECTIONS

HOR.=1:100  
VER.=1:50

MORRIS AVENUE SOUTH, CROSS SECTIONS, STA. 0+240.000 TO STA. 0+250.000