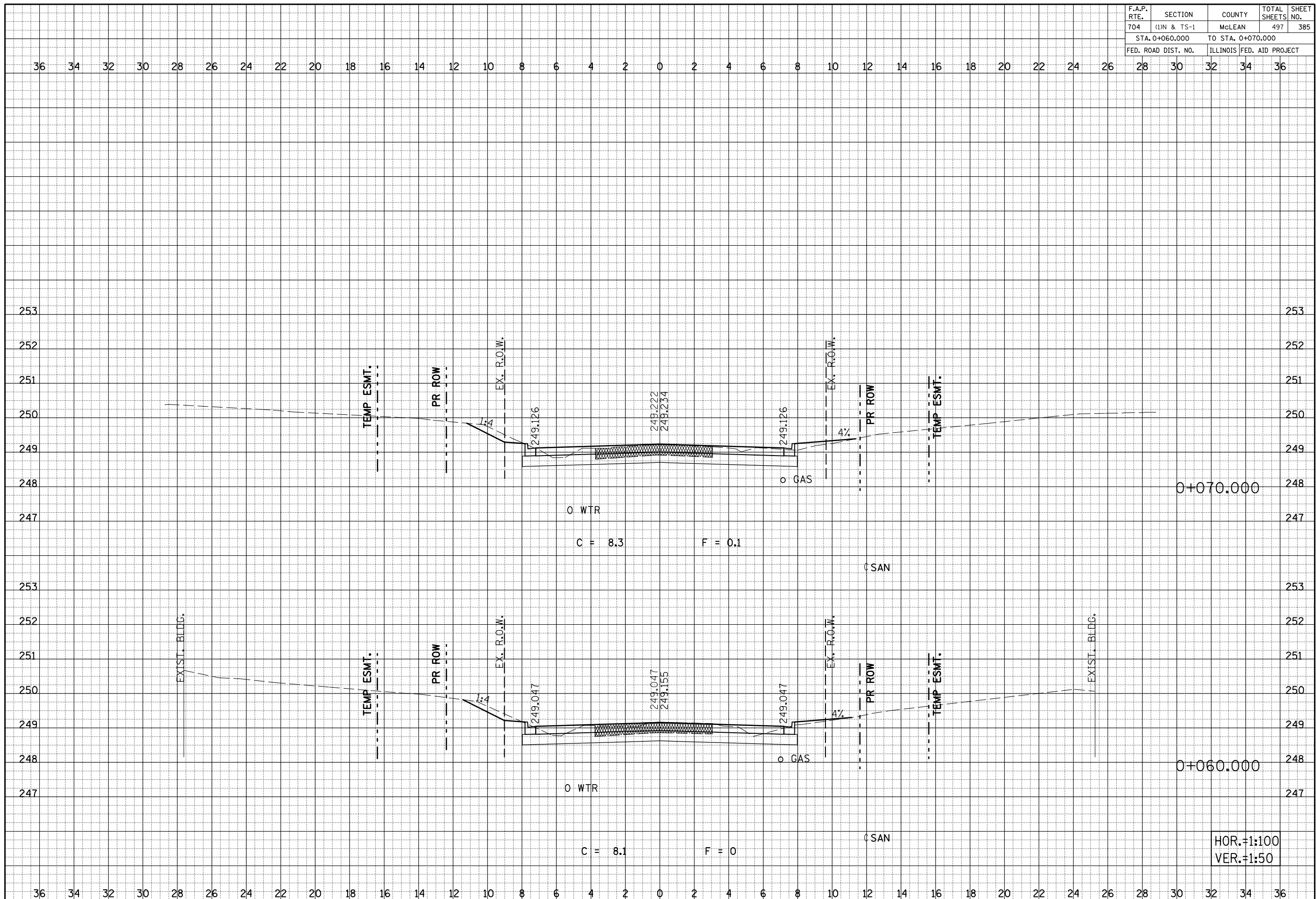


F.A.P. RTE.	SECTION	COUNTY	TOTAL SHEETS	SHEET NO.
704	(11N & TS-1)	McLEAN	497	385
STA. 0+060.000 TO STA. 0+070.000				
FED. ROAD DIST. NO.		ILLINOIS FED. AID PROJECT		



BY	DATE
SURVEYED	
PLOTTED	
REVISIONS	
AREAS CHECKED	
NO. _____	

BY	DATE
SURVEYED	
PLOTTED	
REVISIONS	
AREAS CHECKED	
NO. _____	

HOR.=1:100  
VER.=1:50

SIX POINTS ROAD CROSS SECTIONS, STA. 0+060.000 TO STA. 0+070.000