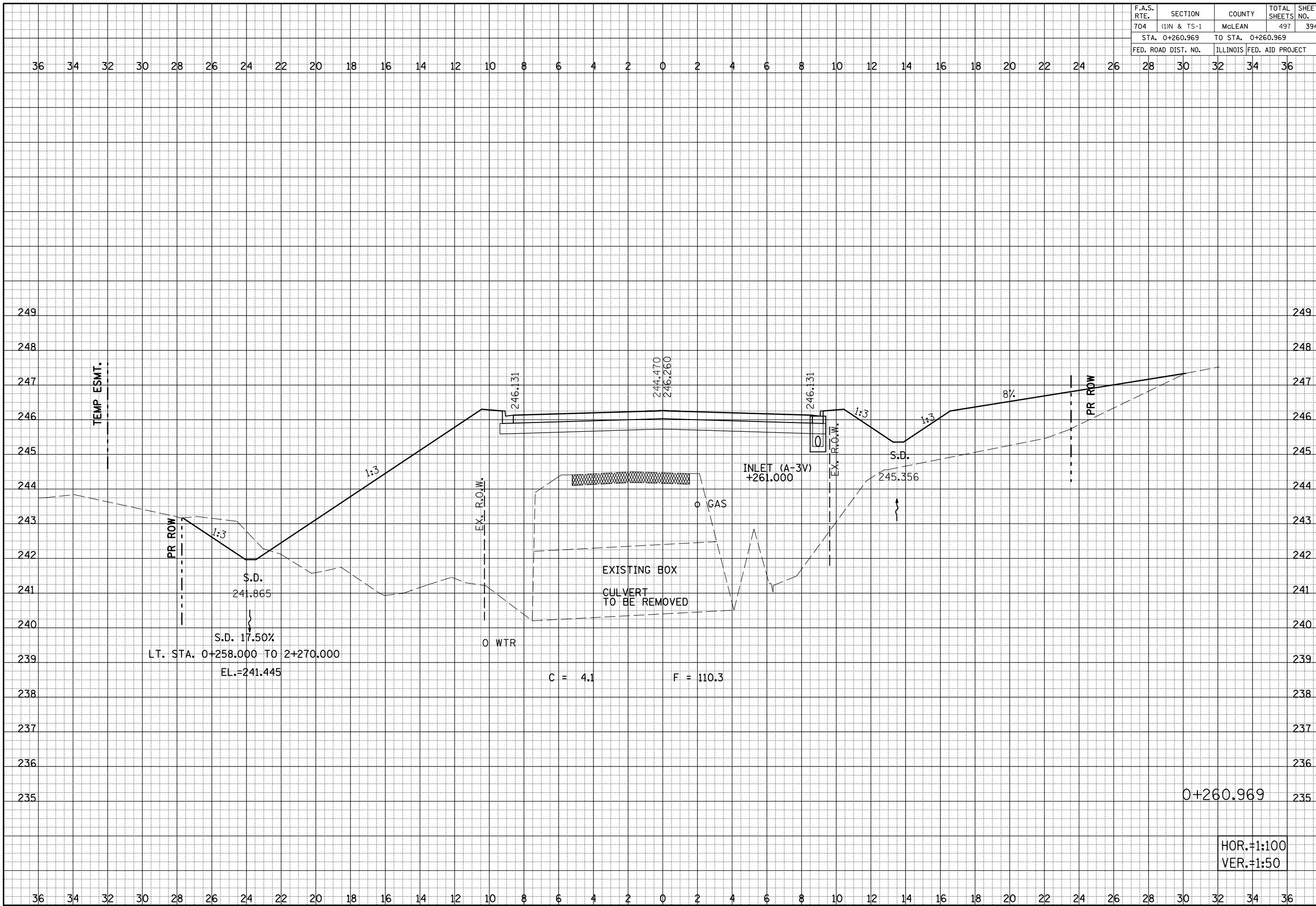


F.A.S. RTE.	SECTION	COUNTY	TOTAL SHEETS	SHEET NO.
704	(1)N & TS-1	MCLEAN	497	394
STA. 0+260.969		TO STA. 0+260.969		
FED. ROAD DIST. NO.		ILLINOIS FED. AID PROJECT		



BY	DATE

BY	DATE

SIX POINTS ROAD CROSS SECTIONS, STA. 0+260.969