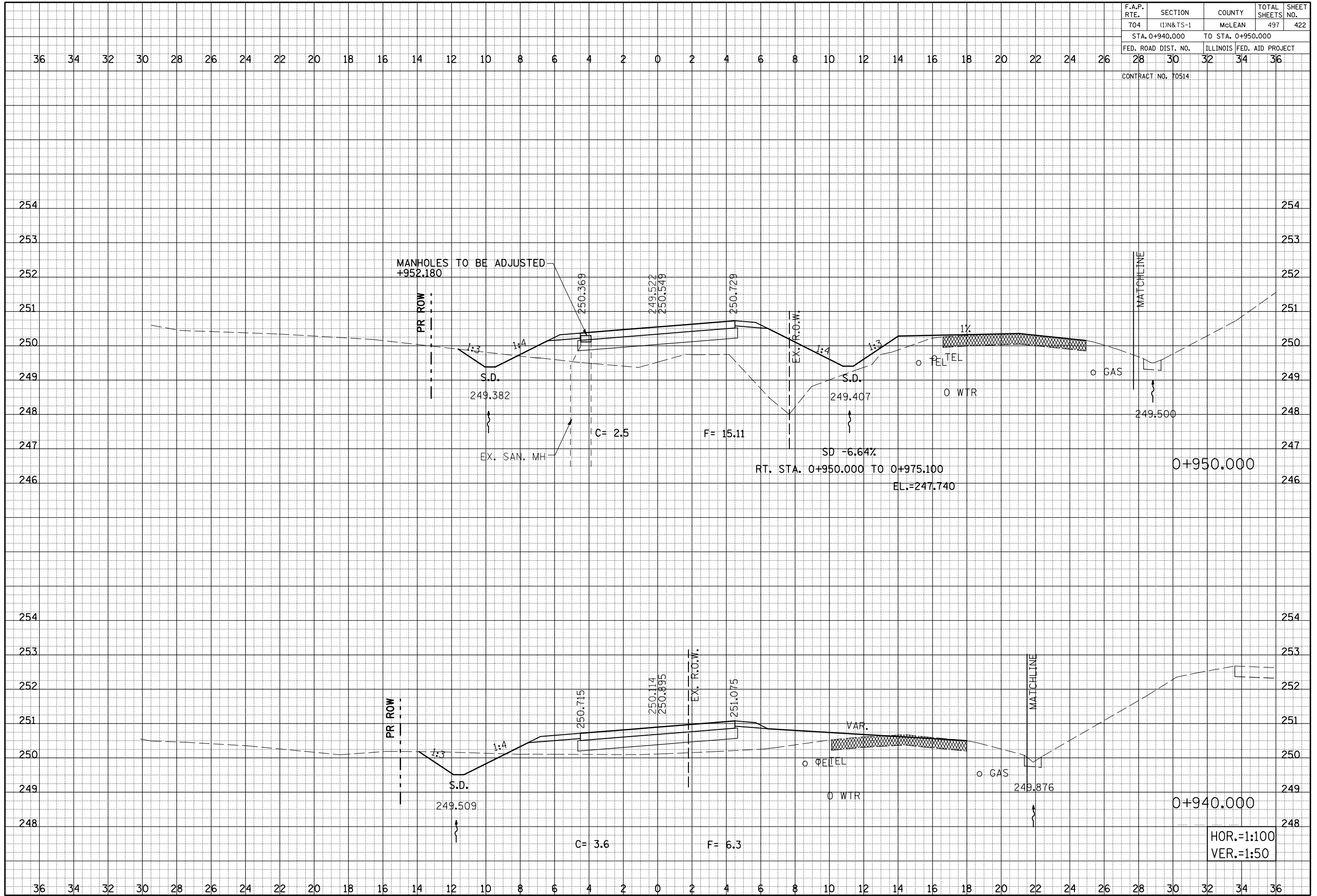


F.A.P. RTE.	SECTION	COUNTY	TOTAL SHEETS	SHEET NO.
704	(1)N&TS-1	MCLEAN	497	422
STA. 0+940.000 TO STA. 0+950.000				
FED. ROAD DIST. NO.	ILLINOIS FED. AID PROJECT			
28	30	32	34	36
CONTRACT NO. 70514				

BY	DATE
ORIGINAL SURVEY PLOTTED AREAS CHECKED	
NO.	

BY	DATE
ORIGINAL SURVEY PLOTTED AREAS CHECKED	
NO.	



SPRINGFIELD ROAD, CROSS SECTIONS, STA. 0+940.000 TO STA. 0+950.000