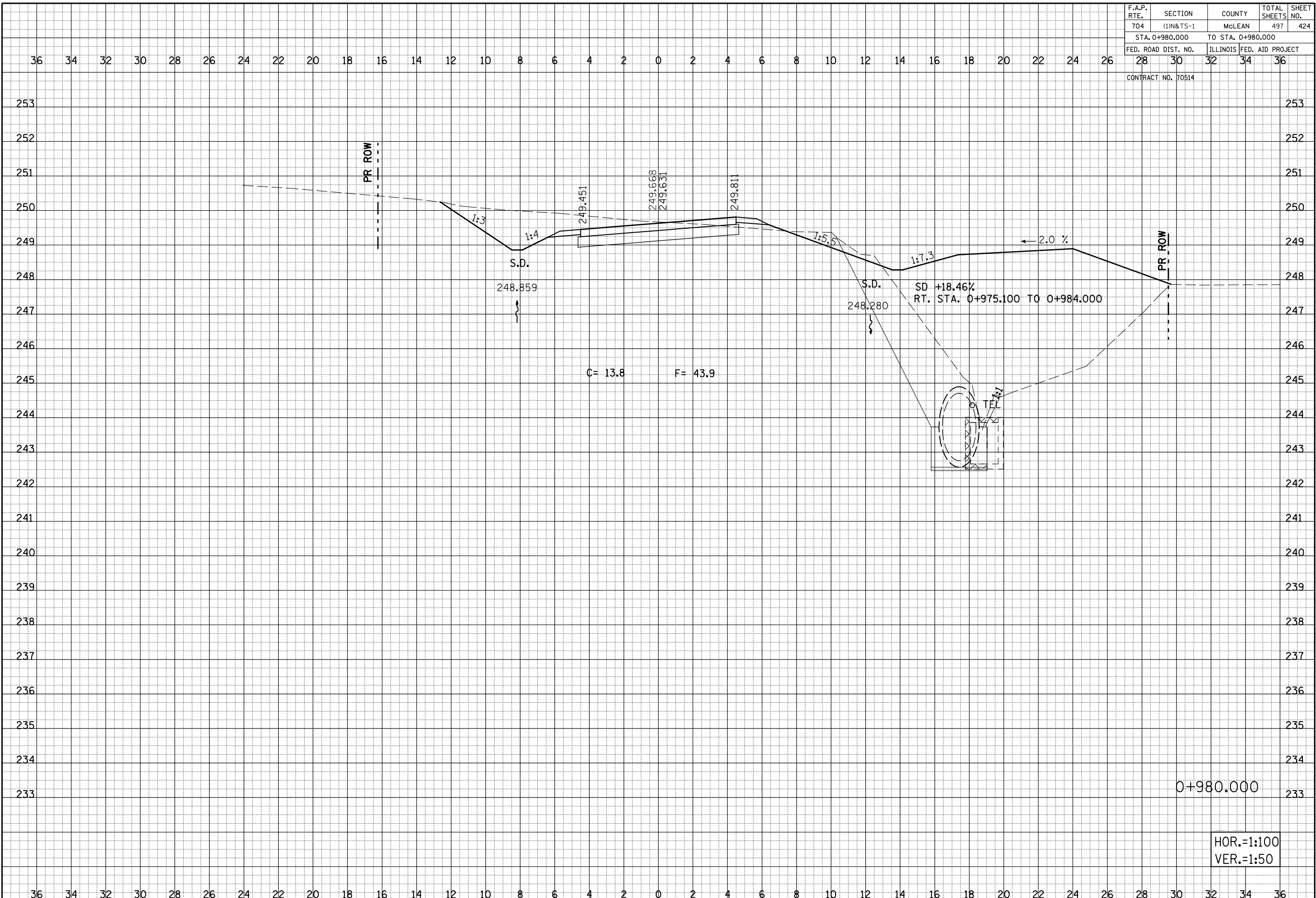


F.A.P. RTE. 704	SECTION (1)N&TS-1	COUNTY MCLEAN	TOTAL SHEETS 497	SHEET NO. 424
STA. 0+980.000 TO STA. 0+980.000				
FED. ROAD DIST. NO. 28	ILLINOIS	FED. AID PROJECT 34		
CONTRACT NO. 70514				



BY	DATE
ORIGINAL SURVEY	SURVEYED
NOTE BOOK	PLOTTED
NO.	AREAS
	CHECKED

BY	DATE
ORIGINAL SURVEY	SURVEYED
NOTE BOOK	PLOTTED
NO.	AREAS
	CHECKED

HOR.=1:100  
VER.=1:50